

Datasheet for ABIN7163932
anti-KCNK3 antibody (AA 278-379)

3 Images

[Go to Product page](#)

Overview

Quantity:	100 µg
Target:	KCNK3
Binding Specificity:	AA 278-379
Reactivity:	Human
Host:	Rabbit
Clonality:	Polyclonal
Conjugate:	This KCNK3 antibody is un-conjugated
Application:	Immunohistochemistry (IHC), ELISA, Immunofluorescence (IF)

Product Details

Immunogen:	Recombinant Human Potassium channel subfamily K member 3 protein (278-379AA)
Isotype:	IgG
Cross-Reactivity:	Human
Purification:	>95%, Protein G purified

Target Details

Target:	KCNK3
Alternative Name:	KCNK3 (KCNK3 Products)
Background:	Background: pH -dependent, voltage-insensitive, background potassium channel protein. Rectification direction results from potassium ion concentration on either side of the

Target Details

membrane. Acts as an outward rectifier when external potassium concentration is low. When external potassium concentration is high, current is inward.

Aliases: Acid sensitive potassium channel protein TASK 1 antibody, Acid sensitive potassium channel protein TASK antibody, Acid-sensitive potassium channel protein TASK-1 antibody, Cardiac two pore background K(+) channel antibody, cTBAK 1 antibody, K2p3.1 antibody, KCNK3 antibody, KCNK3_HUMAN antibody, OAT1 antibody, Potassium channel subfamily K member 3 antibody, potassium channel, subfamily K, member 3 antibody, Potassium inwardly rectifying channel subfamily K member 3 antibody, PPH4 antibody, rTASK antibody, TASK 1 antibody, TASK antibody, TBAK1 antibody, TWIK related acid sensitive K+ channel antibody, TWIK-related acid-sensitive K(+) channel 1 antibody, Two P domain potassium channel antibody, Two pore K(+) channel KT3. antibody, Two pore K(+) channel KT3.1 antibody, Two pore potassium channel KT3.1 antibody

UniProt: [O14649](#)

Application Details

Application Notes: Recommended dilution: IHC:1:200-1:500, IF:1:50-1:200,

Restrictions: For Research Use only

Handling

Format: Liquid

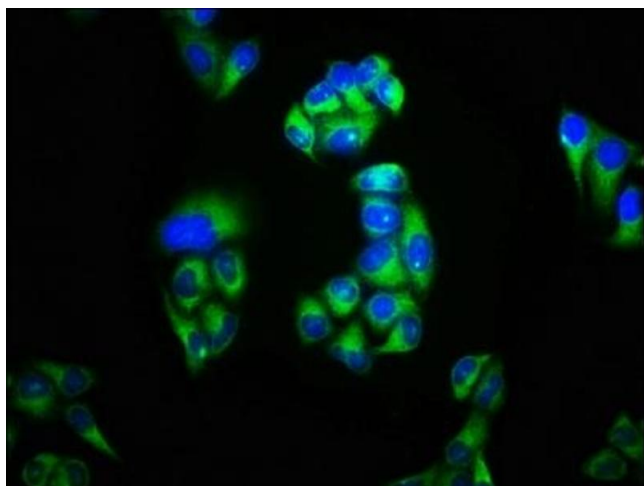
Buffer: Preservative: 0.03 % Proclin 300
Constituents: 50 % Glycerol, 0.01M PBS, pH 7.4

Preservative: ProClin

Precaution of Use: This product contains ProClin: a POISONOUS AND HAZARDOUS SUBSTANCE which should be handled by trained staff only.

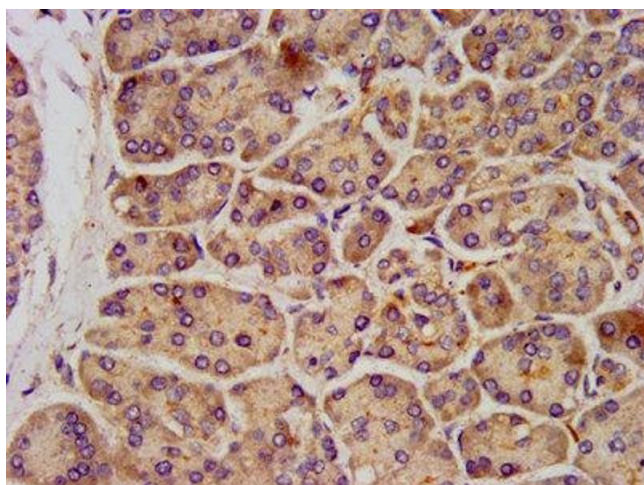
Storage: -20 °C, -80 °C

Storage Comment: Upon receipt, store at -20°C or -80°C. Avoid repeated freeze.



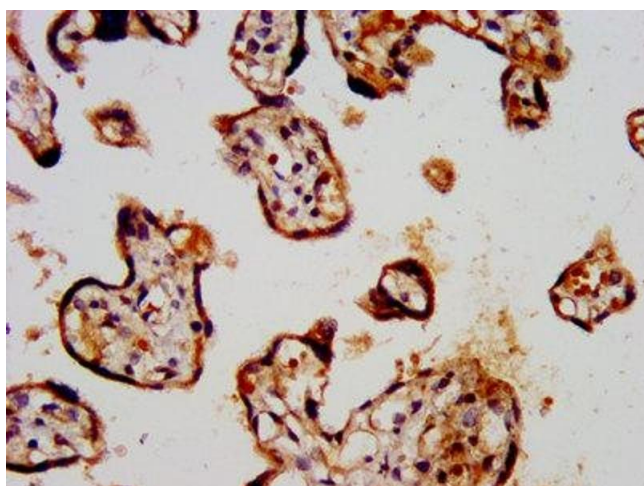
Immunofluorescence

Image 1. Immunofluorescence staining of HeLa cells with ABIN7163932 at 1:100, counter-stained with DAPI. The cells were fixed in 4% formaldehyde, permeabilized using 0.2% Triton X-100 and blocked in 10% normal Goat Serum. The cells were then incubated with the antibody overnight at 4°C. The secondary antibody was Alexa Fluor 488-conjugated AffiniPure Goat Anti-Rabbit IgG(H+L).



Immunohistochemistry

Image 2. IHC image of ABIN7163932 diluted at 1:300 and staining in paraffin-embedded human pancreatic tissue performed on a Leica Bond™ system. After dewaxing and hydration, antigen retrieval was mediated by high pressure in a citrate buffer (pH 6.0). Section was blocked with 10% normal goat serum 30min at RT. Then primary antibody (1% BSA) was incubated at 4°C overnight. The primary is detected by a biotinylated secondary antibody and visualized using an HRP conjugated SP system.



Immunohistochemistry

Image 3. IHC image of ABIN7163932 diluted at 1:300 and staining in paraffin-embedded human placenta tissue performed on a Leica Bond™ system. After dewaxing and hydration, antigen retrieval was mediated by high pressure in a citrate buffer (pH 6.0). Section was blocked with 10% normal goat serum 30min at RT. Then primary antibody (1% BSA) was incubated at 4°C overnight. The primary is detected by a biotinylated secondary antibody and visualized using an HRP conjugated SP system.