

Datasheet for ABIN7163940
anti-KCNT1 antibody (AA 1026-1230)[Go to Product page](#)

2 Images

Overview

Quantity:	100 µg
Target:	KCNT1
Binding Specificity:	AA 1026-1230
Reactivity:	Human
Host:	Rabbit
Clonality:	Polyclonal
Conjugate:	This KCNT1 antibody is un-conjugated
Application:	Immunohistochemistry (IHC), ELISA, Immunofluorescence (IF)

Product Details

Immunogen:	Recombinant Human Potassium channel subfamily T member 1 protein (1026-1230AA)
Isotype:	IgG
Cross-Reactivity:	Human
Purification:	>95%, Protein G purified

Target Details

Target:	KCNT1
Alternative Name:	KCNT1 (KCNT1 Products)
Background:	Background: Outwardly rectifying potassium channel subunit that may coassemble with other Slo-type channel subunits. Activated by high intracellular sodium or chloride levels. Activated

Target Details

upon stimulation of G-protein coupled receptors, such as CHRM1 and GRIA1. May be regulated by calcium in the absence of sodium ions (in vitro) (By similarity).

Aliases: bA100C15.2 antibody, EIEE14 antibody, ENFL5 antibody, KCa4.1 antibody, KCNT1 antibody, KCNT1_HUMAN antibody, Potassium channel subfamily T member 1 antibody, Potassium channel, sodium activated subfamily T, member 1 antibody, Potassium channel, subfamily T, member 1 antibody, Sequence like a calcium-activated K⁺ channel antibody, SLACK antibody, Slo2.2 antibody

UniProt: [Q5JUK3](#)

Application Details

Application Notes: Recommended dilution: IHC:1:200-1:500, IF:1:50-1:200,

Restrictions: For Research Use only

Handling

Format: Liquid

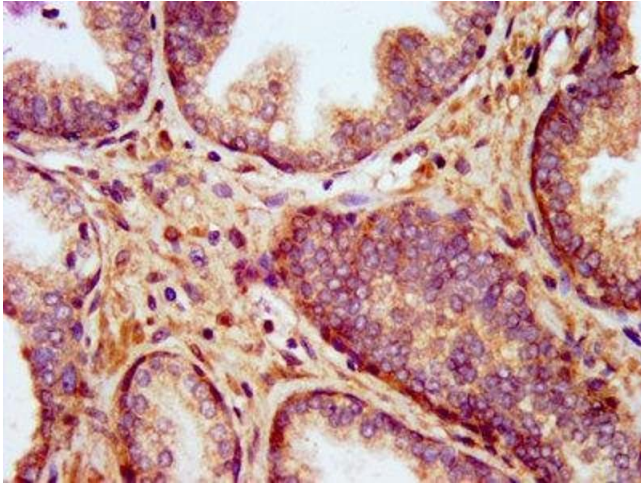
Buffer: Preservative: 0.03 % Proclin 300
Constituents: 50 % Glycerol, 0.01M PBS, pH 7.4

Preservative: ProClin

Precaution of Use: This product contains ProClin: a POISONOUS AND HAZARDOUS SUBSTANCE which should be handled by trained staff only.

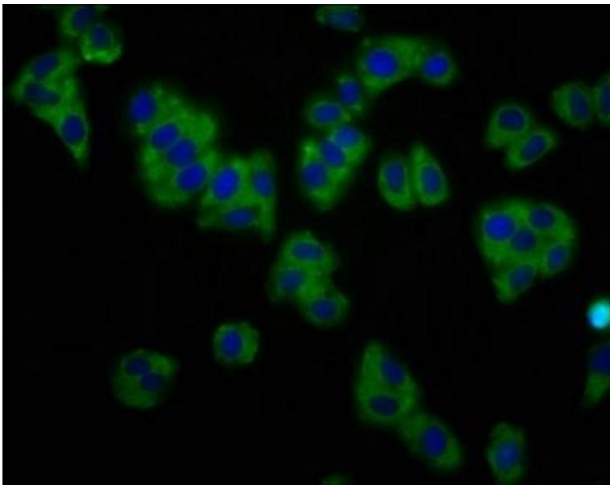
Storage: -20 °C, -80 °C

Storage Comment: Upon receipt, store at -20°C or -80°C. Avoid repeated freeze.



Immunohistochemistry

Image 1. IHC image of ABIN7163940 diluted at 1:400 and staining in paraffin-embedded human prostate cancer performed on a Leica Bond™ system. After dewaxing and hydration, antigen retrieval was mediated by high pressure in a citrate buffer (pH 6.0). Section was blocked with 10% normal goat serum 30min at RT. Then primary antibody (1% BSA) was incubated at 4°C overnight. The primary is detected by a biotinylated secondary antibody and visualized using an HRP conjugated SP system.



Immunofluorescence

Image 2. Immunofluorescence staining of HepG2 cells with ABIN7163940 at 1:133, counter-stained with DAPI. The cells were fixed in 4% formaldehyde, permeabilized using 0.2% Triton X-100 and blocked in 10% normal Goat Serum. The cells were then incubated with the antibody overnight at 4°C. The secondary antibody was Alexa Fluor 488-conjugated AffiniPure Goat Anti-Rabbit IgG(H+L).