

Datasheet for ABIN7163973  
**anti-KCND1 antibody (AA 410-647)**[Go to Product page](#)

## 3 Images

## Overview

Quantity:	100 µg
Target:	KCND1 (Kcnd1)
Binding Specificity:	AA 410-647
Reactivity:	Human
Host:	Rabbit
Clonality:	Polyclonal
Conjugate:	This KCND1 antibody is un-conjugated
Application:	ELISA, Immunohistochemistry (IHC), Immunofluorescence (IF)

## Product Details

Immunogen:	Recombinant Human Potassium voltage-gated channel subfamily D member 1 protein (410-647AA)
Isotype:	IgG
Cross-Reactivity:	Human
Purification:	>95%, Protein G purified

## Target Details

Target:	KCND1 (Kcnd1)
Alternative Name:	KCND1 ( <a href="#">Kcnd1 Products</a> )
Background:	Background: Pore-forming (alpha) subunit of voltage-gated rapidly inactivating A-type

## Target Details

potassium channels. May contribute to I(To) current in heart and I(Sa) current in neurons.

Channel properties are modulated by interactions with other alpha subunits and with regulatory subunits.

Aliases: Kcnd1 antibody, KCND1\_HUMAN antibody, Kv4.1 antibody, mShal antibody, OTTHUMP00000025805 antibody, OTTHUMP00000025806 antibody, Potassium voltage gated channel Shal related subfamily member 1 antibody, Potassium voltage gated channel subfamily D member 1 antibody, Potassium voltage-gated channel subfamily D member 1 antibody, Shal type potassium channel antibody, Voltage gated potassium channel Kv4.1 antibody, Voltage gated potassium channel subunit Kv4.1 antibody, Voltage-gated potassium channel subunit Kv4.1 antibody

UniProt: [Q9NSA2](#)

## Application Details

Application Notes: Recommended dilution: IHC:1:20-1:200, IF:1:50-1:200,

Restrictions: For Research Use only

## Handling

Format: Liquid

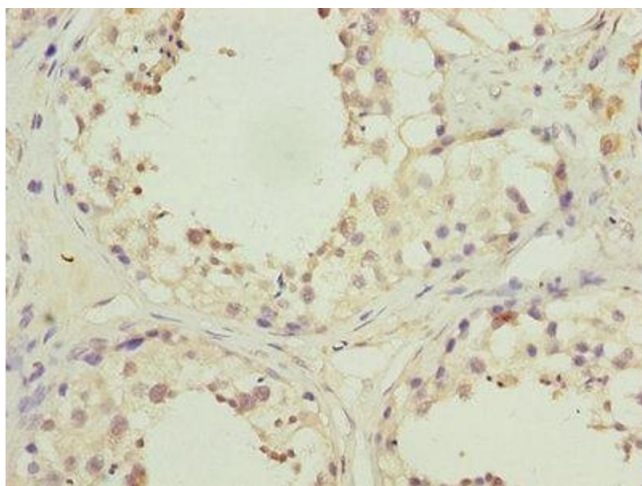
Buffer: Preservative: 0.03 % Proclin 300  
Constituents: 50 % Glycerol, 0.01M PBS, PH 7.4

Preservative: ProClin

Precaution of Use: This product contains ProClin: a POISONOUS AND HAZARDOUS SUBSTANCE which should be handled by trained staff only.

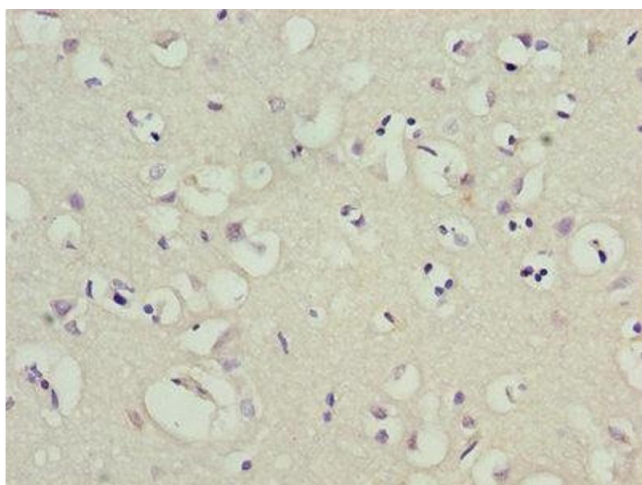
Storage: -20 °C,-80 °C

Storage Comment: Upon receipt, store at -20°C or -80°C. Avoid repeated freeze.



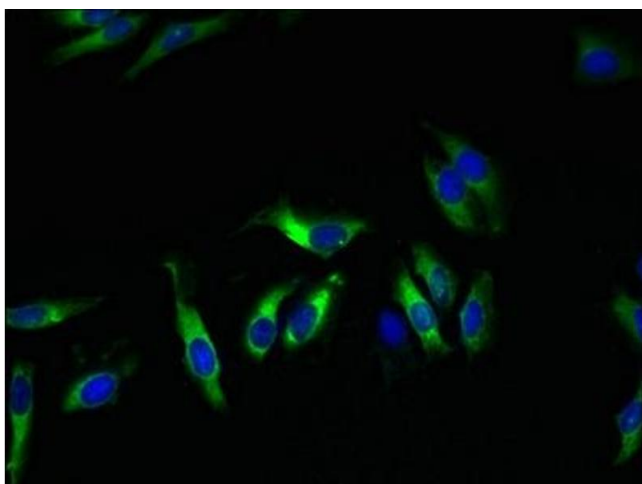
#### Immunohistochemistry

**Image 1.** Immunohistochemistry of paraffin-embedded human testis tissue using ABIN7163973 at dilution of 1:100



#### Immunohistochemistry

**Image 2.** Immunohistochemistry of paraffin-embedded human brain tissue using ABIN7163973 at dilution of 1:100



#### Immunofluorescence

**Image 3.** Immunofluorescent analysis of HeLa cells using ABIN7163973 at dilution of 1:100 and Alexa Fluor 488-conjugated AffiniPure Goat Anti-Rabbit IgG(H+L)