

Datasheet for ABIN7164019  
**anti-KCNV2 antibody (AA 1-155)**[Go to Product page](#)

## 2 Images

## Overview

Quantity:	100 µg
Target:	KCNV2
Binding Specificity:	AA 1-155
Reactivity:	Human
Host:	Rabbit
Clonality:	Polyclonal
Conjugate:	This KCNV2 antibody is un-conjugated
Application:	ELISA, Immunohistochemistry (IHC), Immunofluorescence (IF)

## Product Details

Immunogen:	Recombinant Human Potassium voltage-gated channel subfamily V member 2 protein (1-155AA)
Isotype:	IgG
Cross-Reactivity:	Human
Purification:	>95%, Protein G purified

## Target Details

Target:	KCNV2
Alternative Name:	KCNV2 ( <a href="#">KCNV2 Products</a> )
Background:	Background: Potassium channel subunit. Modulates channel activity by shifting the threshold

## Target Details

and the half-maximal activation to more negative values.

Aliases: KCNV2 antibody, KCNV2\_HUMAN antibody, KV11.1 antibody, Kv8.2 antibody, MGC120515 antibody, Potassium channel subfamily V member 2 antibody, Potassium voltage-gated channel subfamily V member 2 antibody, RCD3B antibody, Voltage-gated potassium channel Kv8.2 antibody, Voltage-gated potassium channel subunit Kv8.2 antibody

UniProt: [Q8TDN2](#)

## Application Details

Application Notes: Recommended dilution: IHC:1:500-1:1000, IF:1:50-1:200,

Restrictions: For Research Use only

## Handling

Format: Liquid

Buffer: Preservative: 0.03 % Proclin 300  
Constituents: 50 % Glycerol, 0.01M PBS, pH 7.4

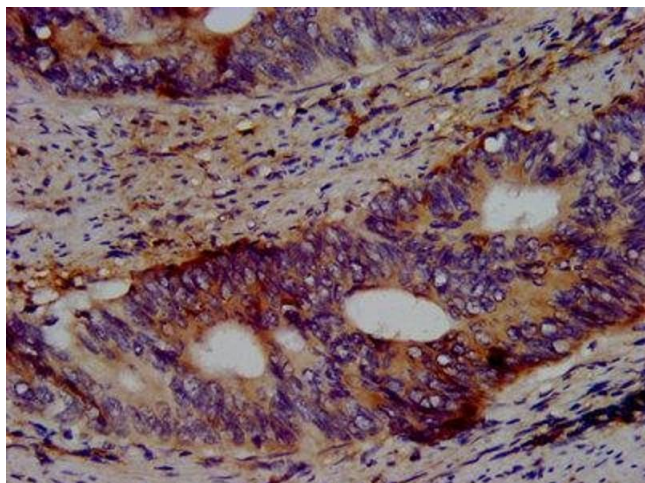
Preservative: ProClin

Precaution of Use: This product contains ProClin: a POISONOUS AND HAZARDOUS SUBSTANCE which should be handled by trained staff only.

Storage: -20 °C,-80 °C

Storage Comment: Upon receipt, store at -20°C or -80°C. Avoid repeated freeze.

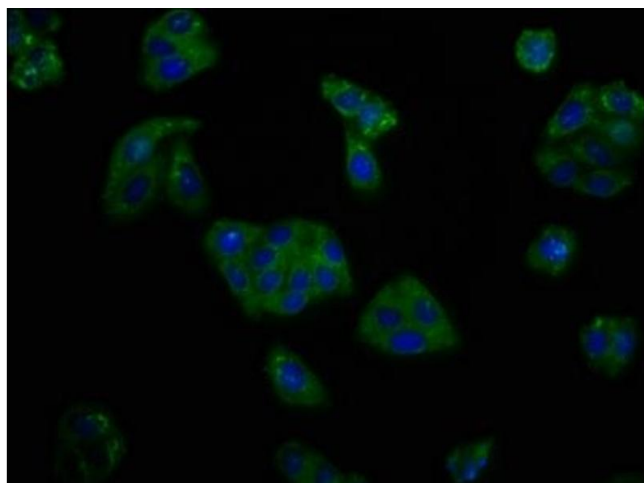
## Images



### Immunohistochemistry

**Image 1.** IHC image of ABIN7164019 diluted at 1:500 and staining in paraffin-embedded human colon cancer performed on a Leica Bond™ system. After dewaxing and hydration, antigen retrieval was mediated by high pressure in a citrate buffer (pH 6.0). Section was blocked with 10% normal goat serum 30min at RT. Then primary antibody (1% BSA) was incubated at 4°C overnight. The primary is detected by a biotinylated secondary antibody and

visualized using an HRP conjugated SP system.



### Immunofluorescence

**Image 2.** Immunofluorescence staining of HepG2 cells with ABIN7164019 at 1:166, counter-stained with DAPI. The cells were fixed in 4% formaldehyde, permeabilized using 0.2% Triton X-100 and blocked in 10% normal Goat Serum. The cells were then incubated with the antibody overnight at 4°C. The secondary antibody was Alexa Fluor 488-conjugated AffiniPure Goat Anti-Rabbit IgG(H+L).