

Datasheet for ABIN7164031
anti-HCN1 antibody (AA 784-887)

3 Images

[Go to Product page](#)

Overview

Quantity:	100 µg
Target:	HCN1
Binding Specificity:	AA 784-887
Reactivity:	Human
Host:	Rabbit
Clonality:	Polyclonal
Conjugate:	This HCN1 antibody is un-conjugated
Application:	Immunohistochemistry (IHC), ELISA, Immunofluorescence (IF)

Product Details

Immunogen:	Recombinant Human Potassium/sodium hyperpolarization-activated cyclic nucleotide-gated channel 1 protein (784-887AA)
Isotype:	IgG
Cross-Reactivity:	Human
Purification:	>95%, Protein G purified

Target Details

Target:	HCN1
Alternative Name:	HCN1 (HCN1 Products)
Background:	Background: Hyperpolarization-activated ion channel exhibiting weak selectivity for potassium

Target Details

over sodium ions (PubMed:28086084). Contributes to the native pacemaker currents in heart (If) and in neurons (Ih). May mediate responses to sour stimuli.

Aliases: BCNG-1 antibody, BCNG1 antibody, Brain cyclic nucleotide gated channel 1 antibody, Brain cyclic nucleotide-gated channel 1 antibody, HAC 2 antibody, HAC2 antibody, HCN1 antibody, HCN1_HUMAN antibody, Hyperpolarization activated cyclic nucleotide gated potassium channel 1 antibody, Potassium channel, voltage-gated, brain, 1 antibody, Potassium/sodium hyperpolarization activated cyclic nucleotide gated channel 1 antibody, Potassium/sodium hyperpolarization-activated cyclic nucleotide-gated channel 1 antibody

UniProt: [O60741](#)

Pathways: [Asymmetric Protein Localization](#)

Application Details

Application Notes: Recommended dilution: IHC:1:500-1:1000, IF:1:50-1:200,

Restrictions: For Research Use only

Handling

Format: Liquid

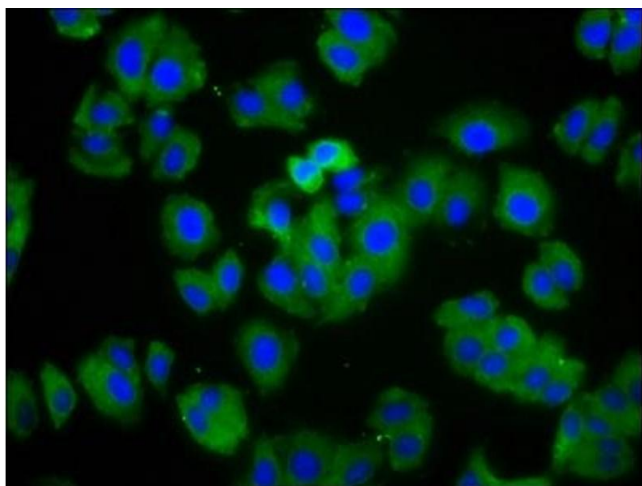
Buffer: Preservative: 0.03 % Proclin 300
Constituents: 50 % Glycerol, 0.01M PBS, pH 7.4

Preservative: ProClin

Precaution of Use: This product contains ProClin: a POISONOUS AND HAZARDOUS SUBSTANCE which should be handled by trained staff only.

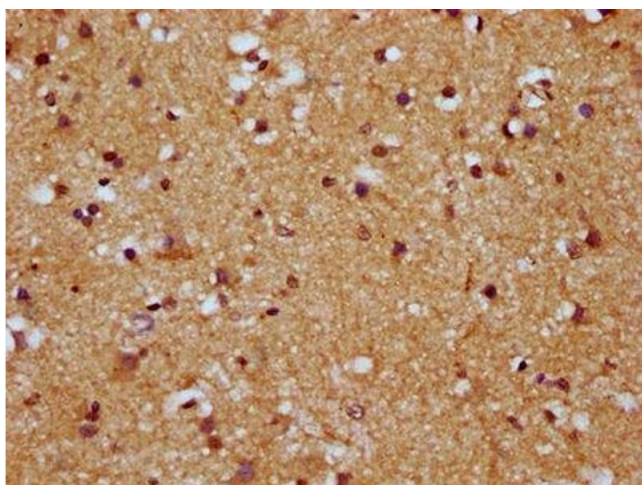
Storage: -20 °C, -80 °C

Storage Comment: Upon receipt, store at -20°C or -80°C. Avoid repeated freeze.



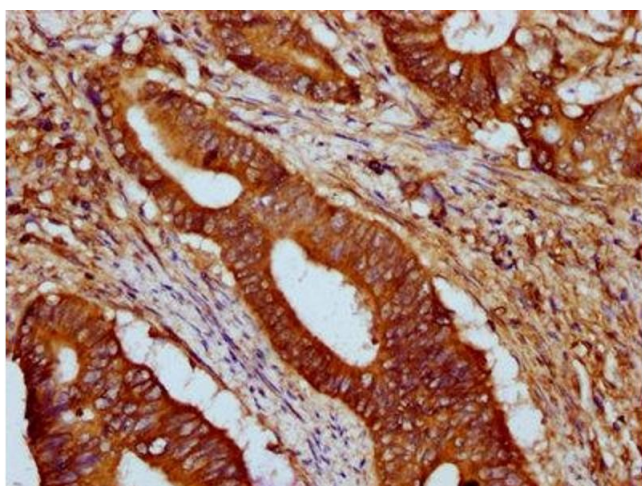
Immunofluorescence

Image 1. Immunofluorescence staining of HepG2 cells with ABIN7164031 at 1:166, counter-stained with DAPI. The cells were fixed in 4% formaldehyde, permeabilized using 0.2% Triton X-100 and blocked in 10% normal Goat Serum. The cells were then incubated with the antibody overnight at 4°C. The secondary antibody was Alexa Fluor 488-conjugated AffiniPure Goat Anti-Rabbit IgG(H+L).



Immunohistochemistry

Image 2. IHC image of ABIN7164031 diluted at 1:500 and staining in paraffin-embedded human brain tissue performed on a Leica Bond™ system. After dewaxing and hydration, antigen retrieval was mediated by high pressure in a citrate buffer (pH 6.0). Section was blocked with 10% normal goat serum 30min at RT. Then primary antibody (1% BSA) was incubated at 4°C overnight. The primary is detected by a biotinylated secondary antibody and visualized using an HRP conjugated SP system.



Immunohistochemistry

Image 3. IHC image of ABIN7164031 diluted at 1:500 and staining in paraffin-embedded human colon cancer performed on a Leica Bond™ system. After dewaxing and hydration, antigen retrieval was mediated by high pressure in a citrate buffer (pH 6.0). Section was blocked with 10% normal goat serum 30min at RT. Then primary antibody (1% BSA) was incubated at 4°C overnight. The primary is detected by a biotinylated secondary antibody and visualized using an HRP conjugated SP system.