

Datasheet for ABIN7164035  
**anti-POTEE antibody (AA 435-606)**



[Go to Product page](#)

1 Image

### Overview

Quantity:	100 µL
Target:	POTEE
Binding Specificity:	AA 435-606
Reactivity:	Human
Host:	Rabbit
Clonality:	Polyclonal
Conjugate:	This POTEE antibody is un-conjugated
Application:	Western Blotting (WB), ELISA

### Product Details

Immunogen:	Recombinant Human POTE ankyrin domain family member E protein (435-606aa)
Isotype:	IgG
Cross-Reactivity:	Human
Purification:	>95%, Protein G purified

### Target Details

Target:	POTEE
Alternative Name:	POTEE ( <a href="#">POTEE Products</a> )
Background:	Background: blood microparticle, extracellular exosome, extracellular space, retina homeostasis, substantia nigra development

## Target Details

Aliases: POTE ankyrin domain family member E (ANKRD26-like family C member 1A) (Prostate, ovary, testis-expressed protein on chromosome 2) (POTE-2), POTEE, A26C1A POTE2

UniProt: [Q6S8J3](#)

## Application Details

Application Notes: Recommended dilution: WB:1:1000-1:5000,

Restrictions: For Research Use only

## Handling

Format: Liquid

Buffer: Preservative: 0.03 % Proclin 300  
Constituents: 50 % Glycerol, 0.01M PBS, pH 7.4

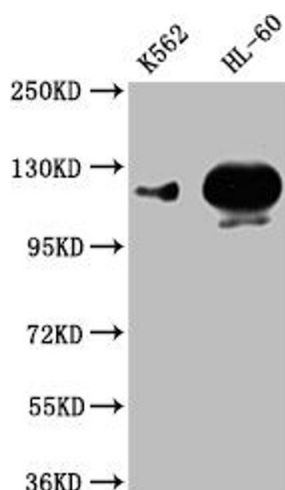
Preservative: ProClin

Precaution of Use: This product contains ProClin: a POISONOUS AND HAZARDOUS SUBSTANCE which should be handled by trained staff only.

Storage: -20 °C,-80 °C

Storage Comment: Upon receipt, store at -20°C or -80°C. Avoid repeated freeze.

## Images



### Western Blotting

**Image 1.** Western Blot Positive WB detected in: K562 whole cell lysate,HL-60 whole cell lysate All lanes: POTEE antibody at 1:1000 Secondary Goat polyclonal to rabbit IgG at 1/50000 dilution Predicted band size: 122 kDa Observed band size: 122 kDa