



[Go to Product page](#)

Datasheet for ABIN7164129  
**anti-PRAMEF6 antibody (AA 209-476)**

1 Image

### Overview

Quantity:	100 µL
Target:	PRAMEF6
Binding Specificity:	AA 209-476
Reactivity:	Human
Host:	Rabbit
Clonality:	Polyclonal
Conjugate:	This PRAMEF6 antibody is un-conjugated
Application:	Western Blotting (WB), ELISA

### Product Details

Immunogen:	Recombinant Human PRAME family member 6 protein (209-476AA)
Isotype:	IgG
Cross-Reactivity:	Human
Purification:	>95%, Protein G purified

### Target Details

Target:	PRAMEF6
Alternative Name:	PRAMEF6 ( <a href="#">PRAMEF6 Products</a> )
Background:	PRAMEF6 antibody, PRAME family member 6 antibody
UniProt:	<a href="#">Q5VXH4</a>

## Application Details

Application Notes: Recommended dilution: WB:1:1000-1:5000,

Restrictions: For Research Use only

## Handling

Format: Liquid

Buffer: Preservative: 0.03 % Proclin 300  
Constituents: 50 % Glycerol, 0.01M PBS, pH 7.4

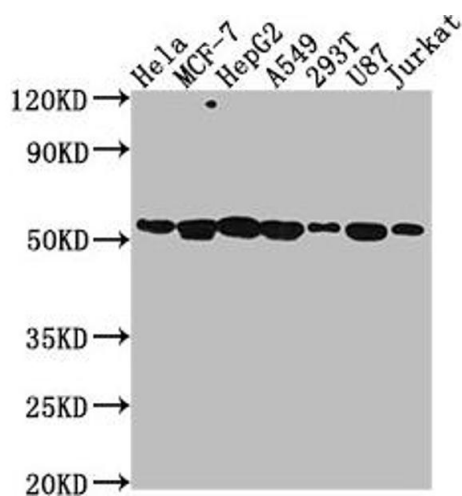
Preservative: ProClin

Precaution of Use: This product contains ProClin: a POISONOUS AND HAZARDOUS SUBSTANCE which should be handled by trained staff only.

Storage: -20 °C,-80 °C

Storage Comment: Upon receipt, store at -20°C or -80°C. Avoid repeated freeze.

## Images



### Western Blotting

**Image 1.** Western Blot Positive WB detected in: HeLa whole cell lysate, MCF-7 whole cell lysate, HepG2 whole cell lysate, A549 whole cell lysate, 293T whole cell lysate, U87 whole cell lysate, Jurkat whole cell lysate All lanes: PRAMEF6 antibody at 1:2000 Secondary Goat polyclonal to rabbit IgG at 1/50000 dilution Predicted band size: 55 kDa Observed band size: 55 kDa