

Datasheet for ABIN7164137
anti-PBX1 antibody (AA 315-430)

3 Images

[Go to Product page](#)

Overview

Quantity:	100 µg
Target:	PBX1
Binding Specificity:	AA 315-430
Reactivity:	Human
Host:	Rabbit
Clonality:	Polyclonal
Conjugate:	This PBX1 antibody is un-conjugated
Application:	Western Blotting (WB), ELISA, Immunofluorescence (IF), Immunohistochemistry (IHC)

Product Details

Immunogen:	Recombinant Human Pre-B-cell leukemia transcription factor 1 protein (315-430AA)
Isotype:	IgG
Cross-Reactivity:	Human, Rat
Purification:	>95%, Protein G purified

Target Details

Target:	PBX1
Alternative Name:	PBX1 (PBX1 Products)
Background:	Background: Binds the sequence 5\\\'-ATCAATCAA-3\\\''. Acts as a transcriptional activator of PF4 in complex with MEIS1. Converted into a potent transcriptional activator by the (1,19)

Target Details

translocation. May have a role in steroidogenesis and, subsequently, sexual development and differentiation. Isoform PBX1b as part of a PDX1:PBX1b:MEIS2b complex in pancreatic acinar cells is involved in the transcriptional activation of the ELA1 enhancer, the complex binds to the enhancer B element and cooperates with the transcription factor 1 complex (PTF1) bound to the enhancer A element. Probably in complex with MEIS2, is involved in transcriptional regulation by KLF4. Acts as a transcriptional activator of NKX2-5 and a transcriptional repressor of CDKN2B. Together with NKX2-5, it is required for spleen development through a mechanism that involves CDKN2B repression (By similarity).

Aliases: DKFZp686B09108 antibody, Homeo box protein PBX1 antibody, Homeo box protein PRL antibody, Homeobox protein PBX 1 antibody, Homeobox protein PBX1 antibody, Homeobox protein PRL antibody, MGC126627 antibody, PBX 1 antibody, Pbx1 antibody, PBX1_HUMAN antibody, Pre B cell leukemia homeobox 1 antibody, Pre B cell leukemia transcription factor 1 antibody, Pre-B-cell leukemia transcription factor 1 antibody, PRL antibody

UniProt: [P40424](#)

Application Details

Application Notes: Recommended dilution: WB:1:500-1:5000, IHC:1:100-1:300, IF:1:50-1:200,

Restrictions: For Research Use only

Handling

Format: Liquid

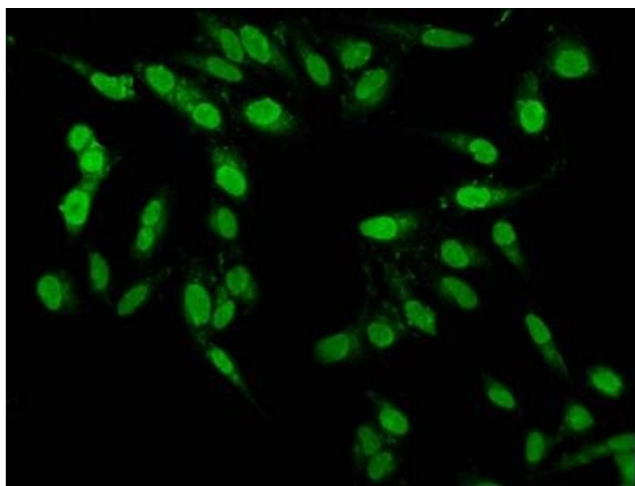
Buffer: Preservative: 0.03 % Proclin 300
Constituents: 50 % Glycerol, 0.01M PBS, pH 7.4

Preservative: ProClin

Precaution of Use: This product contains ProClin: a POISONOUS AND HAZARDOUS SUBSTANCE which should be handled by trained staff only.

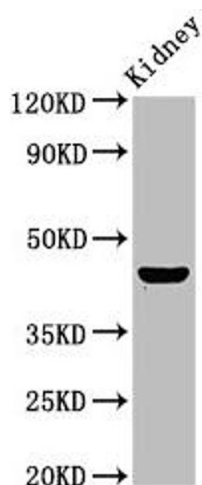
Storage: -20 °C,-80 °C

Storage Comment: Upon receipt, store at -20°C or -80°C. Avoid repeated freeze.



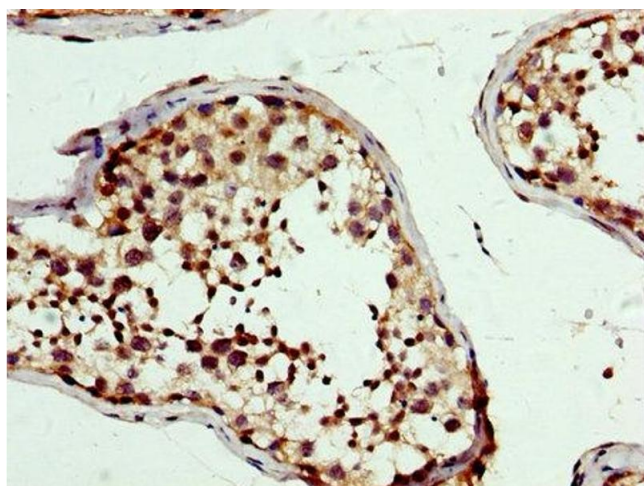
Immunofluorescence

Image 1. Immunofluorescence staining of HeLa cells with ABIN7164137 at 1:100, counter-stained with DAPI. The cells were fixed in 4 % formaldehyde, permeabilized using 0.2 % Triton X-100 and blocked in 10 % normal Goat Serum. The cells were then incubated with the antibody overnight at 4 °C. The secondary antibody was Alexa Fluor 488-conjugated AffiniPure Goat Anti-Rabbit IgG(H+L).



Western Blotting

Image 2. Western Blot Positive WB detected in: Rat kidney tissue All lanes: PBX1 antibody at 4.7 µg/mL Secondary Goat polyclonal to rabbit IgG at 1/50000 dilution Predicted band size: 47, 39 kDa Observed band size: 47 kDa



Immunohistochemistry

Image 3. IHC image of ABIN7164137 diluted at 1:300 and staining in paraffin-embedded human testis tissue performed on a Leica Bond™ system. After dewaxing and hydration, antigen retrieval was mediated by high pressure in a citrate buffer (pH 6.0). Section was blocked with 10 % normal goat serum 30 min at RT. Then primary antibody (1 % BSA) was incubated at 4 °C overnight. The primary is detected by a biotinylated secondary antibody and visualized using an HRP conjugated SP system.