

Datasheet for ABIN7164153  
**anti-PRPF39 antibody (AA 41-190)**

## 3 Images

[Go to Product page](#)

## Overview

Quantity:	100 µg
Target:	PRPF39
Binding Specificity:	AA 41-190
Reactivity:	Human
Host:	Rabbit
Clonality:	Polyclonal
Conjugate:	This PRPF39 antibody is un-conjugated
Application:	ELISA, Immunohistochemistry (IHC), Immunofluorescence (IF)

## Product Details

Immunogen:	Recombinant Human Pre-mRNA-processing factor 39 protein (41-190AA)
Isotype:	IgG
Cross-Reactivity:	Human
Purification:	>95%, Protein G purified

## Target Details

Target:	PRPF39
Alternative Name:	PRPF39 ( <a href="#">PRPF39 Products</a> )
Background:	Background: Involved in pre-mRNA splicing. Aliases: FLJ111128 antibody, FLJ20666 antibody, FLJ45460 antibody, MGC149842 antibody,

## Target Details

MGC149843 antibody, Pre-mRNA-processing factor 39 antibody, PRP39 homolog antibody, PRP39 pre-mRNA processing factor 39 homolog (S. cerevisiae) antibody, PRP39\_HUMAN antibody, prpf39 antibody

UniProt: [Q86UA1](#)

## Application Details

Application Notes: Recommended dilution: IHC:1:500-1:1000, IF:1:50-1:200,

Restrictions: For Research Use only

## Handling

Format: Liquid

Buffer: Preservative: 0.03 % Proclin 300  
Constituents: 50 % Glycerol, 0.01M PBS, pH 7.4

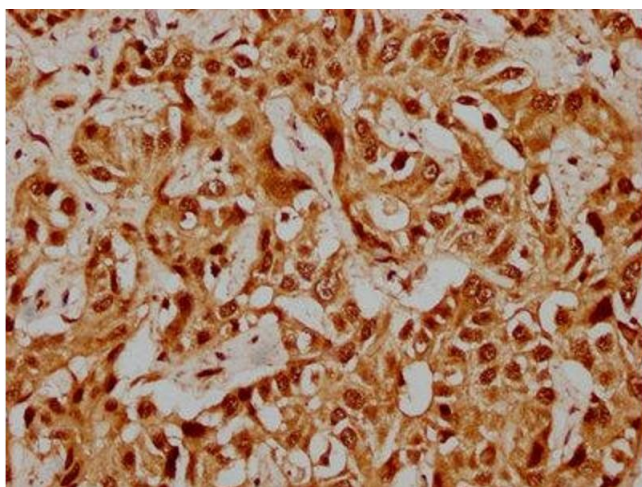
Preservative: ProClin

Precaution of Use: This product contains ProClin: a POISONOUS AND HAZARDOUS SUBSTANCE which should be handled by trained staff only.

Storage: -20 °C,-80 °C

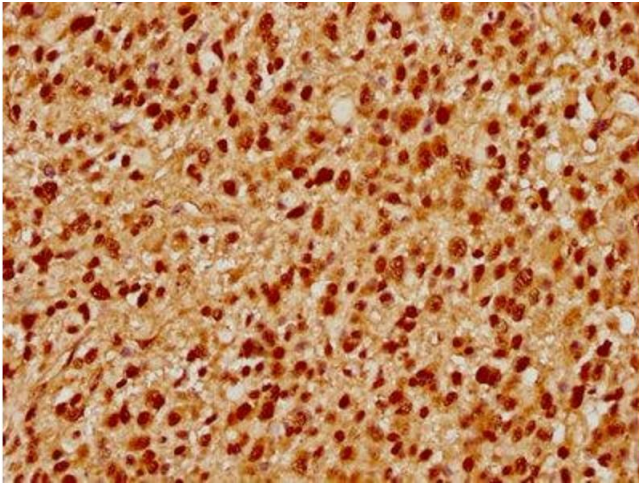
Storage Comment: Upon receipt, store at -20°C or -80°C. Avoid repeated freeze.

## Images



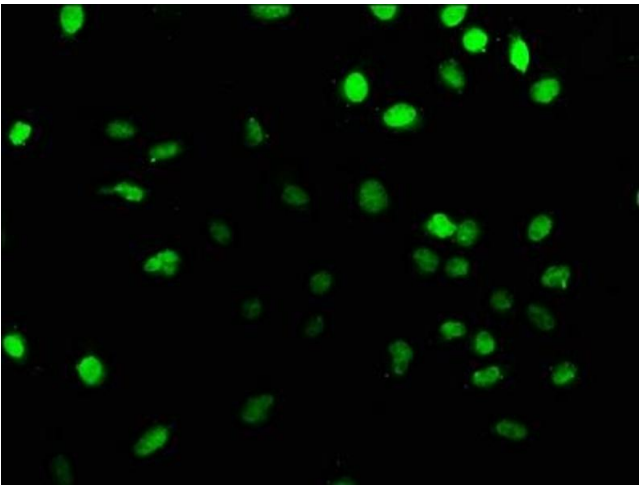
### Immunohistochemistry

**Image 1.** IHC image of ABIN7164153 diluted at 1:500 and staining in paraffin-embedded human liver cancer performed on a Leica Bond™ system. After dewaxing and hydration, antigen retrieval was mediated by high pressure in a citrate buffer (pH 6.0). Section was blocked with 10 % normal goat serum 30 min at RT. Then primary antibody (1 % BSA) was incubated at 4 °C overnight. The primary is detected by a biotinylated secondary antibody and visualized using an HRP conjugated SP system.



#### Immunohistochemistry

**Image 2.** IHC image of ABIN7164153 diluted at 1:500 and staining in paraffin-embedded human glioma performed on a Leica Bond™ system. After dewaxing and hydration, antigen retrieval was mediated by high pressure in a citrate buffer (pH 6.0). Section was blocked with 10 % normal goat serum 30 min at RT. Then primary antibody (1 % BSA) was incubated at 4 °C overnight. The primary is detected by a biotinylated secondary antibody and visualized using an HRP conjugated SP system.



#### Immunofluorescence

**Image 3.** Immunofluorescence staining of U251 cells with ABIN7164153 at 1:166, counter-stained with DAPI. The cells were fixed in 4 % formaldehyde, permeabilized using 0.2 % Triton X-100 and blocked in 10 % normal Goat Serum. The cells were then incubated with the antibody overnight at 4 °C. The secondary antibody was Alexa Fluor 488-conjugated AffiniPure Goat Anti-Rabbit IgG(H+L).