

Datasheet for ABIN7164157
anti-PRPF4 antibody (AA 120-266)[Go to Product page](#)

2 Images

Overview

Quantity:	100 µg
Target:	PRPF4
Binding Specificity:	AA 120-266
Reactivity:	Human
Host:	Rabbit
Clonality:	Polyclonal
Conjugate:	This PRPF4 antibody is un-conjugated
Application:	Western Blotting (WB), ELISA, Immunohistochemistry (IHC)

Product Details

Immunogen:	Recombinant Human Pre-mRNA-processing factor 40 homolog A protein (120-266AA)
Isotype:	IgG
Cross-Reactivity:	Human
Purification:	>95%, Protein G purified

Target Details

Target:	PRPF4
Alternative Name:	PRPF4A (PRPF4 Products)
Background:	Background: Binds to WASL/N-WASP and suppresses its translocation from the nucleus to the cytoplasm, thereby inhibiting its cytoplasmic function (By similarity). Plays a role in the

Target Details

regulation of cell morphology and cytoskeletal organization. Required in the control of cell shape and migration. May play a role in cytokinesis. May be involved in pre-mRNA splicing.

Aliases: Fas ligand associated factor 1 antibody, Fas ligand-associated factor 1 antibody, FBP 11 antibody, FBP11 antibody, FLAF 1 antibody, FLAF1 antibody, FNBP 3 antibody, Formin binding protein 11 antibody, Formin binding protein 3 antibody, Formin-binding protein 11 antibody, Formin-binding protein 3 antibody, HIP-10 antibody, HIP10 antibody, Huntingtin interacting protein A antibody, Huntingtin interacting protein HYPA antibody, Huntingtin yeast partner A antibody, Huntingtin-interacting protein 10 antibody, Huntingtin-interacting protein A antibody, HYPA antibody, NY REN 6 antibody, NY REN 6 antigen antibody, PR40A_HUMAN antibody, Pre mRNA processing factor 40 homolog A antibody, Pre-mRNA-processing factor 40 homolog A antibody, PRP40 pre mRNA processing factor 40 homolog A (S cerevisiae) antibody, PRP40 pre mRNA processing factor 40 homolog A (yeast) antibody, PRP40 pre mRNA processing factor 40 homolog A antibody, PRPF 40A antibody, PRPF40A antibody, Renal carcinoma antigen NY-REN-6 antibody

UniProt: [O75400](#)

Application Details

Application Notes: Recommended dilution: WB:1:500-1:5000, IHC:1:200-1:500,

Restrictions: For Research Use only

Handling

Format: Liquid

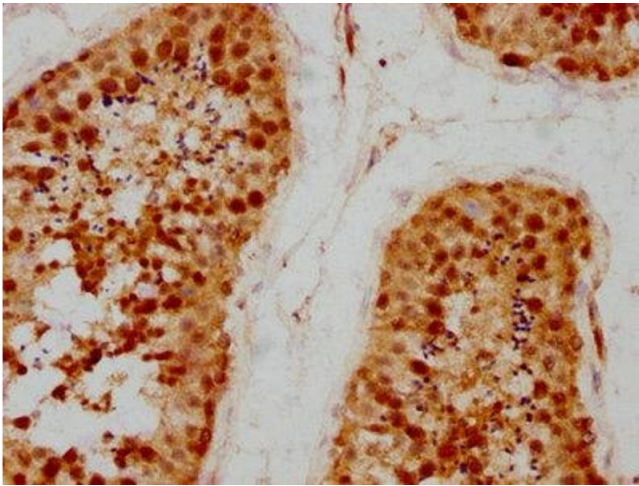
Buffer: Preservative: 0.03 % Proclin 300
Constituents: 50 % Glycerol, 0.01M PBS, pH 7.4

Preservative: ProClin

Precaution of Use: This product contains ProClin: a POISONOUS AND HAZARDOUS SUBSTANCE which should be handled by trained staff only.

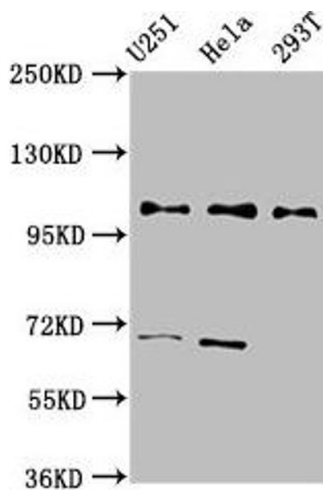
Storage: -20 °C,-80 °C

Storage Comment: Upon receipt, store at -20°C or -80°C. Avoid repeated freeze.



Immunohistochemistry

Image 1. IHC image of ABIN7164157 diluted at 1:200 and staining in paraffin-embedded human testis tissue performed on a Leica Bond™ system. After dewaxing and hydration, antigen retrieval was mediated by high pressure in a citrate buffer (pH 6.0). Section was blocked with 10 % normal goat serum 30 min at RT. Then primary antibody (1 % BSA) was incubated at 4 °C overnight. The primary is detected by a biotinylated secondary antibody and visualized using an HRP conjugated SP system.



Western Blotting

Image 2. Western Blot Positive WB detected in: U251 whole cell lysate, HeLa whole cell lysate, 293T whole cell lysate All lanes: PRPF40A antibody at 2.7 µg/mL Secondary Goat polyclonal to rabbit IgG at 1/50000 dilution Predicted band size: 109, 106, 107, 11 kDa Observed band size: 109 kDa