



[Go to Product page](#)

Datasheet for ABIN7164181
anti-SLU7 antibody (AA 138-310)

4 Images

Overview

Quantity:	100 µg
Target:	SLU7
Binding Specificity:	AA 138-310
Reactivity:	Human
Host:	Rabbit
Clonality:	Polyclonal
Conjugate:	This SLU7 antibody is un-conjugated
Application:	Western Blotting (WB), ELISA, Immunohistochemistry (IHC), Immunofluorescence (IF)

Product Details

Immunogen:	Recombinant Human Pre-mRNA-splicing factor SLU7 protein (138-310AA)
Isotype:	IgG
Cross-Reactivity:	Human, Mouse
Purification:	>95%, Protein G purified

Target Details

Target:	SLU7
Alternative Name:	SLU7 (SLU7 Products)
Target Type:	Influenza Protein
Background:	Background: Participates in the second catalytic step of pre-mRNA splicing, when the free

Target Details

hydroxyl group of exon I attacks the 3'-splice site to generate spliced mRNA and the excised lariat intron. Required for holding exon 1 properly in the spliceosome and for correct AG identification when more than one possible AG exists in 3'-splicing site region. May be involved in the activation of proximal AG. Probably also involved in alternative splicing regulation.

Aliases: 9G8 antibody, hSlu7 antibody, MGC9280 antibody, Pre mRNA splicing factor SLU7 antibody, Pre-mRNA-splicing factor slu7 antibody, SLU 7 antibody, slu7 antibody, SLU7 splicing factor homolog (*S. cerevisiae*) antibody, SLU7 splicing factor homolog antibody, SLU7_HUMAN antibody, splicing factor antibody, Step II splicing factor SLU7 antibody, Zinc knuckle motif containing antibody

UniProt: [O95391](#)

Pathways: [Ribonucleoprotein Complex Subunit Organization](#), [SARS-CoV-2 Protein Interactome](#)

Application Details

Application Notes: Recommended dilution: WB:1:500-1:5000, IHC:1:20-1:200, IF:1:50-1:200,

Restrictions: For Research Use only

Handling

Format: Liquid

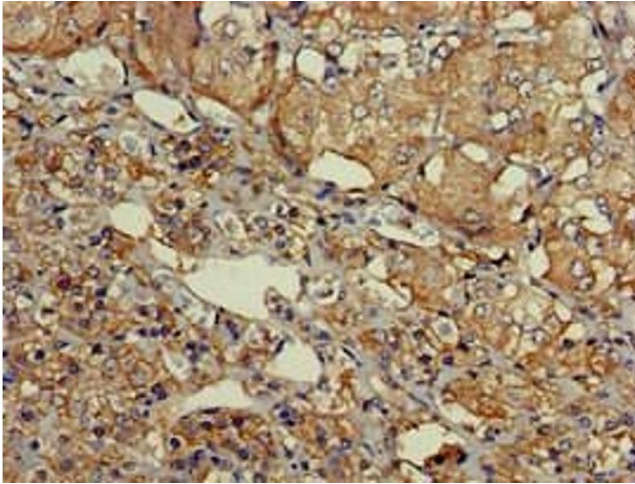
Buffer: Preservative: 0.03 % Proclin 300
Constituents: 50 % Glycerol, 0.01M PBS, pH 7.4

Preservative: ProClin

Precaution of Use: This product contains ProClin: a POISONOUS AND HAZARDOUS SUBSTANCE which should be handled by trained staff only.

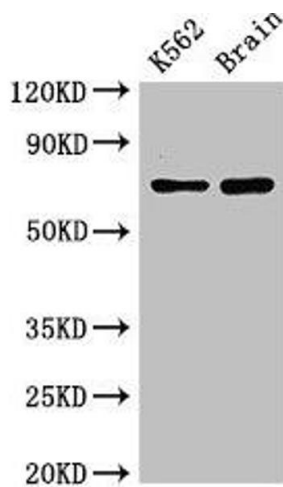
Storage: -20 °C,-80 °C

Storage Comment: Upon receipt, store at -20°C or -80°C. Avoid repeated freeze.



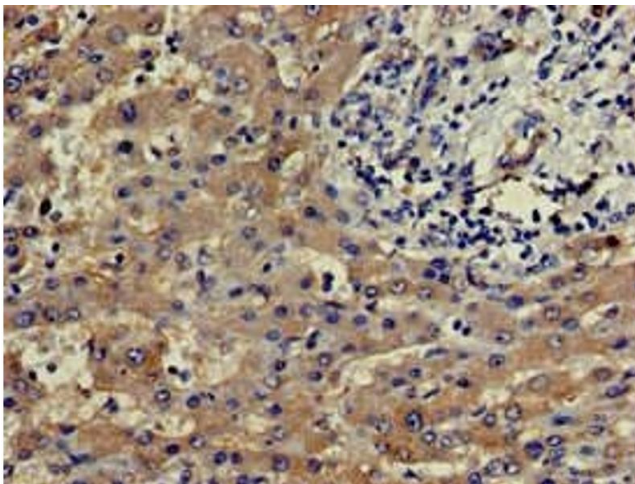
Immunohistochemistry

Image 1. Immunohistochemistry of paraffin-embedded human adrenal gland tissue using ABIN7164181 at dilution of 1:100



Western Blotting

Image 2. Western Blot Positive WB detected in: K562 whole cell lysate, Mouse brain tissue All lanes: SLU7 antibody at 3 µg/mL Secondary Goat polyclonal to rabbit IgG at 1/50000 dilution Predicted band size: 69 kDa Observed band size: 69 kDa



Immunohistochemistry

Image 3. Immunohistochemistry of paraffin-embedded human liver cancer using ABIN7164181 at dilution of 1:100

Please check the [product details page](#) for more images. Overall 4 images are available for ABIN7164181.