

Datasheet for ABIN7164185
anti-BCAS2 antibody (AA 1-225)[Go to Product page](#)

2 Images

Overview

Quantity:	100 µL
Target:	BCAS2
Binding Specificity:	AA 1-225
Reactivity:	Human
Host:	Rabbit
Clonality:	Polyclonal
Conjugate:	This BCAS2 antibody is un-conjugated
Application:	ELISA, Immunohistochemistry (IHC)

Product Details

Immunogen:	Recombinant Human Pre-mRNA-splicing factor SPF27 protein (1-225AA)
Isotype:	IgG
Cross-Reactivity:	Human
Purification:	Antigen Affinity Purified

Target Details

Target:	BCAS2
Alternative Name:	BCAS2 (BCAS2 Products)
Background:	Background: Component of the PRP19-CDC5L complex that forms an integral part of the spliceosome and is required for activating pre-mRNA splicing. May have a scaffolding role in

Target Details

the spliceosome assembly as it contacts all other components of the core complex. The PRP19-CDC5L complex may also play a role in the response to DNA damage (DDR).

Aliases: bcas2 antibody, Breast carcinoma amplified sequence 2 antibody, Breast carcinoma-amplified sequence 2 antibody, DAM 1 antibody, DAM-1 antibody, DAM1 antibody, DNA amplified in mammary carcinoma 1 protein antibody, MGC7712 antibody, Pre mRNA splicing factor SPF27 antibody, Pre-mRNA-splicing factor spf27 antibody, Snt309 antibody, SPF27 antibody, SPF27_HUMAN antibody, Spliceosome associated protein amplified in breast cancer antibody, Spliceosome associated protein SPF 27 antibody, Spliceosome-associated protein SPF 27 antibody

UniProt: [O75934](#)

Application Details

Application Notes: Recommended dilution: IHC:1:20-1:200,

Restrictions: For Research Use only

Handling

Format: Liquid

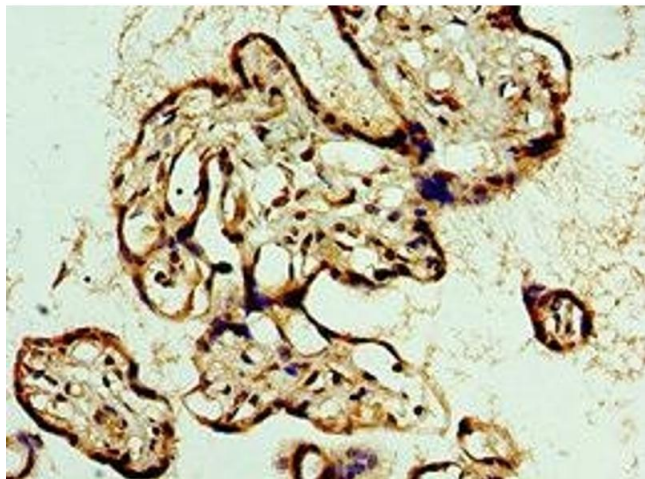
Buffer: PBS with 0.02 % sodium azide, 50 % glycerol, pH 7.3.

Preservative: Sodium azide

Precaution of Use: This product contains Sodium azide: a POISONOUS AND HAZARDOUS SUBSTANCE which should be handled by trained staff only.

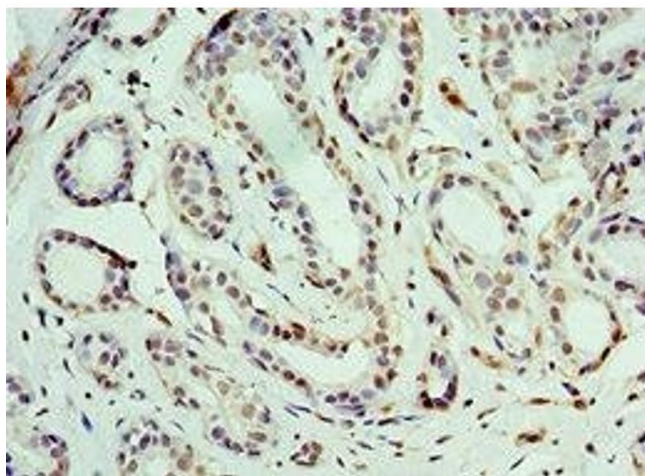
Storage: -20 °C,-80 °C

Storage Comment: Upon receipt, store at -20°C or -80°C. Avoid repeated freeze.



Immunohistochemistry

Image 1. Immunohistochemistry of paraffin-embedded human placenta tissue using ABIN7164185 at dilution of 1:100



Immunohistochemistry

Image 2. Immunohistochemistry of paraffin-embedded human breast cancer using ABIN7164185 at dilution of 1:100