

Datasheet for ABIN7164206
anti-PFDN1 antibody (AA 2-122)[Go to Product page](#)

2 Images

Overview

Quantity:	100 µg
Target:	PFDN1
Binding Specificity:	AA 2-122
Reactivity:	Human
Host:	Rabbit
Clonality:	Polyclonal
Conjugate:	This PFDN1 antibody is un-conjugated
Application:	ELISA, Immunohistochemistry (IHC), Immunofluorescence (IF)

Product Details

Immunogen:	Recombinant Human Prefoldin subunit 1 protein (2-122AA)
Isotype:	IgG
Cross-Reactivity:	Human
Purification:	>95%, Protein G purified

Target Details

Target:	PFDN1
Alternative Name:	PFDN1 (PFDN1 Products)
Background:	Background: PFDN1 is a heterohexameric chaperone protein which assists in the correct folding of other proteins. It binds specifically to cytosolic chaperonin and transfers target

Target Details

proteins. PFDN1 may function by selectively targeting nascent actin and tubulin chains pending their transfer to cytosolic chaperonin for final folding and/or assembly. It promotes folding in an environment in which there are many competing pathways for non native proteins.

Aliases: PDF antibody, PFD1 antibody, PFD1_HUMAN antibody, pfdn1 antibody, Prefoldin 1 antibody, Prefoldin subunit 1 antibody

UniProt: [O60925](#)

Pathways: [Unfolded Protein Response](#)

Application Details

Application Notes: Recommended dilution: IHC:1:20-1:200, IF:1:50-1:200,

Restrictions: For Research Use only

Handling

Format: Liquid

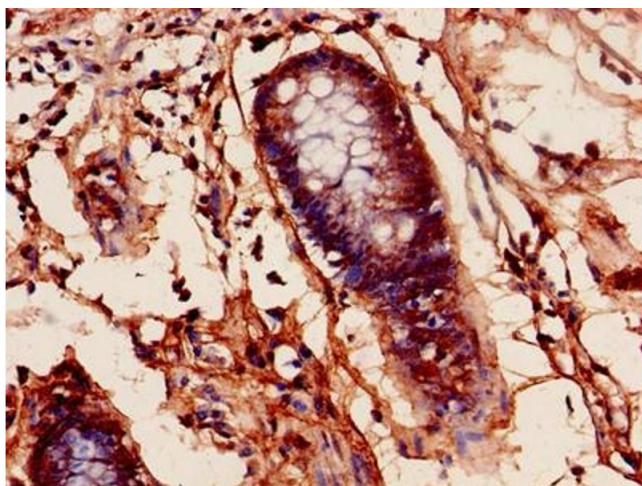
Buffer: Preservative: 0.03 % Proclin 300
Constituents: 50 % Glycerol, 0.01M PBS, PH 7.4

Preservative: ProClin

Precaution of Use: This product contains ProClin: a POISONOUS AND HAZARDOUS SUBSTANCE which should be handled by trained staff only.

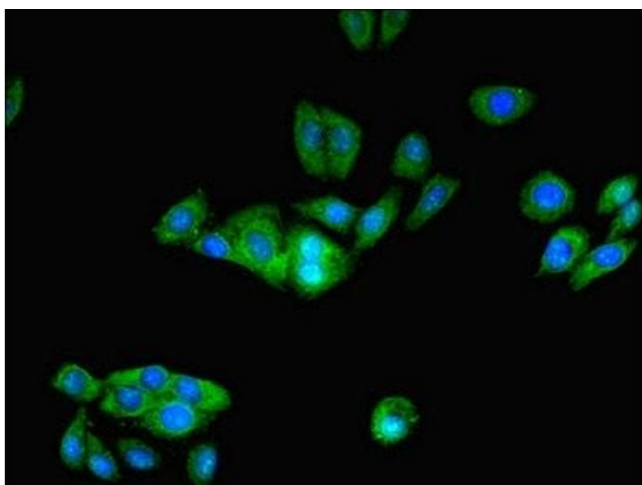
Storage: -20 °C,-80 °C

Storage Comment: Upon receipt, store at -20°C or -80°C. Avoid repeated freeze.



Immunohistochemistry

Image 1. Immunohistochemistry of paraffin-embedded human colon cancer using ABIN7164206 at dilution of 1:100



Immunofluorescence

Image 2. Immunofluorescent analysis of HepG2 cells using ABIN7164206 at dilution of 1:100 and Alexa Fluor 488-conjugated AffiniPure Goat Anti-Rabbit IgG(H+L)