

Datasheet for ABIN7164243
anti-PSG9 antibody (AA 241-426)[Go to Product page](#)

3 Images

Overview

Quantity:	100 µL
Target:	PSG9
Binding Specificity:	AA 241-426
Reactivity:	Human
Host:	Rabbit
Clonality:	Polyclonal
Conjugate:	This PSG9 antibody is un-conjugated
Application:	ELISA, Immunohistochemistry (IHC), Immunofluorescence (IF)

Product Details

Immunogen:	Recombinant Human Pregnancy-specific beta-1-glycoprotein 9 protein (241-426AA)
Isotype:	IgG
Cross-Reactivity:	Human
Purification:	>95%, Protein G purified

Target Details

Target:	PSG9
Alternative Name:	PSG9 (PSG9 Products)
Background:	Background: female pregnancy Aliases: pregnancy specific beta 1 glycoprotein (PSG) antibody, pregnancy specific beta 1

Target Details

glycoprotein 11 antibody, pregnancy specific beta 1 glycoprotein 9 antibody, pregnancy specific beta 1 glycoprotein B antibody, Pregnancy-specific beta-1 glycoprotein B antibody, Pregnancy-specific beta-1-glycoprotein 11 antibody, Pregnancy-specific beta-1-glycoprotein 9 antibody, Pregnancy-specific glycoprotein 11 antibody, Pregnancy-specific glycoprotein 7 antibody, Pregnancy-specific glycoprotein 9 antibody, PS beta B antibody, PS-beta-B antibody, PS-beta-G-11 antibody, PS-beta-G-9 antibody, PS34 antibody, PSBG 9 antibody, PSBG-11 antibody, PSBG-9 antibody, PSG 9 antibody, PSG11 antibody, PSG7 antibody, PSG9 antibody, PSG9_HUMAN antibody, PSGII antibody

UniProt: [Q00887](#)

Application Details

Application Notes: Recommended dilution: IHC:1:20-1:200, IF:1:50-1:200,

Restrictions: For Research Use only

Handling

Format: Liquid

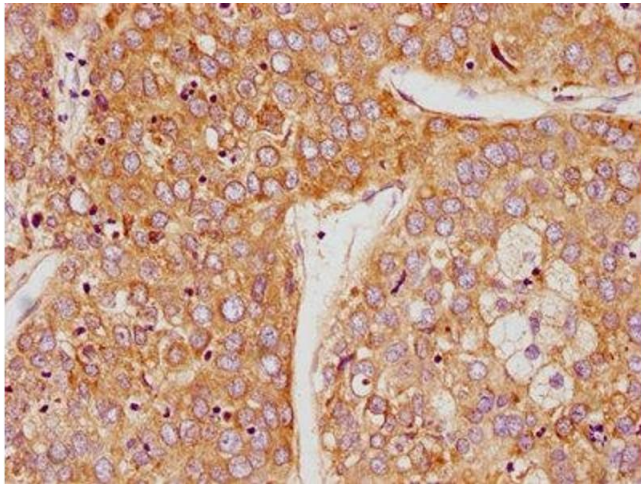
Buffer: Preservative: 0.03 % Proclin 300
Constituents: 50 % Glycerol, 0.01M PBS, pH 7.4

Preservative: ProClin

Precaution of Use: This product contains ProClin: a POISONOUS AND HAZARDOUS SUBSTANCE which should be handled by trained staff only.

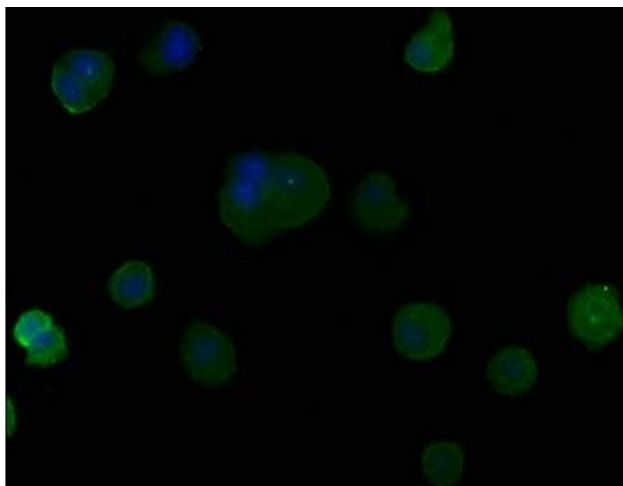
Storage: -20 °C,-80 °C

Storage Comment: Upon receipt, store at -20°C or -80°C. Avoid repeated freeze.



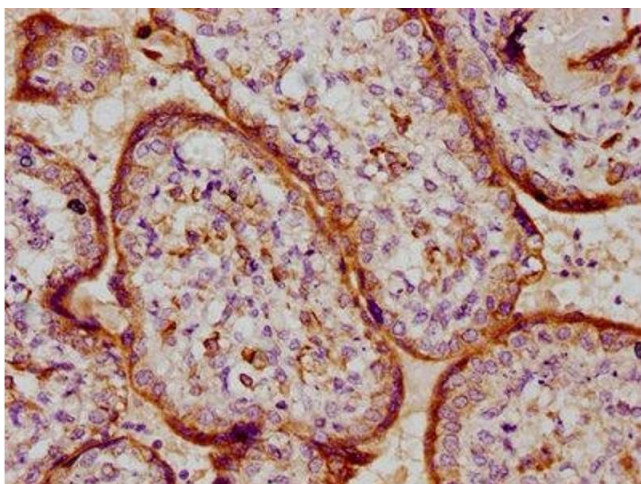
Immunohistochemistry

Image 1. IHC image of ABIN7164243 diluted at 1:100 and staining in paraffin-embedded human liver cancer performed on a Leica Bond™ system. After dewaxing and hydration, antigen retrieval was mediated by high pressure in a citrate buffer (pH 6.0). Section was blocked with 10 % normal goat serum 30 min at RT. Then primary antibody (1 % BSA) was incubated at 4 °C overnight. The primary is detected by a biotinylated secondary antibody and visualized using an HRP conjugated SP system.



Immunofluorescence

Image 2. Immunofluorescence staining of MCF-7 cells with ABIN7164243 at 1:50, counter-stained with DAPI. The cells were fixed in 4 % formaldehyde, permeabilized using 0.2 % Triton X-100 and blocked in 10 % normal Goat Serum. The cells were then incubated with the antibody overnight at 4 °C. The secondary antibody was Alexa Fluor 488-conjugated AffiniPure Goat Anti-Rabbit IgG(H+L).



Immunohistochemistry

Image 3. IHC image of ABIN7164243 diluted at 1:100 and staining in paraffin-embedded human placenta tissue performed on a Leica Bond™ system. After dewaxing and hydration, antigen retrieval was mediated by high pressure in a citrate buffer (pH 6.0). Section was blocked with 10 % normal goat serum 30 min at RT. Then primary antibody (1 % BSA) was incubated at 4 °C overnight. The primary is detected by a biotinylated secondary antibody and visualized using an HRP conjugated SP system.