



[Go to Product page](#)

Datasheet for ABIN7164273  
**anti-PARL antibody (AA 1-170)**

2 Images

Overview

Quantity:	100 µL
Target:	PARL
Binding Specificity:	AA 1-170
Reactivity:	Human
Host:	Rabbit
Clonality:	Polyclonal
Conjugate:	This PARL antibody is un-conjugated
Application:	Western Blotting (WB), ELISA, Immunohistochemistry (IHC)

Product Details

Immunogen:	Recombinant Human Presenilins-associated rhomboid-like protein, mitochondrial protein (1-170AA)
Isotype:	IgG
Cross-Reactivity:	Human
Purification:	Antigen Affinity Purified

Target Details

Target:	PARL
Alternative Name:	PARL ( <a href="#">PARL Products</a> )
Background:	Background: Required for the control of apoptosis during postnatal growth. Essential for

## Target Details

---

proteolytic processing of an antiapoptotic form of OPA1 which prevents the release of mitochondrial cytochrome c in response to intrinsic apoptotic signals (By similarity). Promotes changes in mitochondria morphology regulated by phosphorylation of P-beta domain.

Aliases: Mitochondrial intramembrane cleaving protease PARL antibody, Mitochondrial intramembrane-cleaving protease PARL antibody, P-beta antibody, parl antibody, PARL\_HUMAN antibody, Pbeta antibody, presenilin associated rhomboid-like antibody, Presenilins associated rhomboid-like protein antibody, PRO2207 antibody, PSARL antibody, PSARL1 antibody, PSENIP2 antibody, RHBDS1 antibody, Rhomboid 7 homolog 1 antibody

---

UniProt: [Q9H300](#)

---

Pathways: [Autophagy](#)

## Application Details

---

Application Notes: Recommended dilution: WB:1:500-1:2000, IHC:1:20-1:200,

---

Restrictions: For Research Use only

## Handling

---

Format: Liquid

---

Buffer: PBS with 0.02 % sodium azide, 50 % glycerol, pH 7.3.

---

Preservative: Sodium azide

---

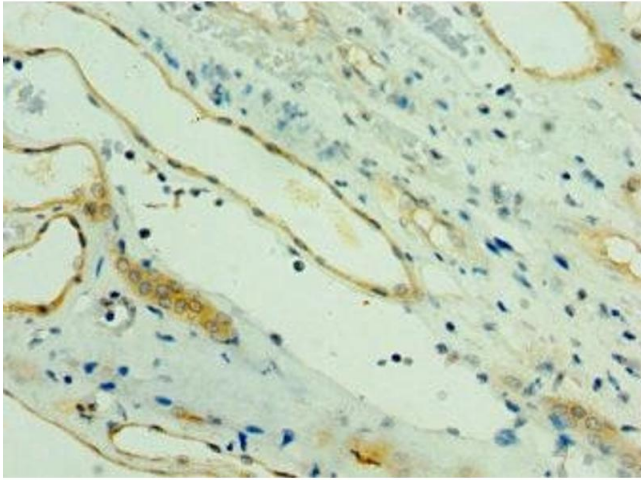
Precaution of Use: This product contains Sodium azide: a POISONOUS AND HAZARDOUS SUBSTANCE which should be handled by trained staff only.

---

Storage: -20 °C,-80 °C

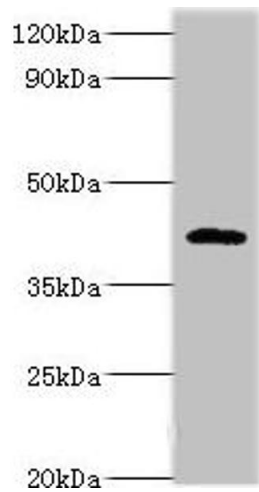
---

Storage Comment: Upon receipt, store at -20°C or -80°C. Avoid repeated freeze.



### Immunohistochemistry

**Image 1.** Immunohistochemistry of paraffin-embedded human kidney tissue using ABIN7164273 at dilution of 1:100



### Western Blotting

**Image 2.** Western blot All lanes: PARL antibody at 6 µg/mL + NIH/3T3 whole cell lysate Secondary Goat polyclonal to rabbit IgG at 1/10000 dilution Predicted band size: 43, 37 kDa Observed band size: 47 kDa