

Datasheet for ABIN7164287 **anti-Prolactin antibody**

[Go to Product page](#)

1 Image

Overview

| | |
|--------------|--|
| Quantity: | 100 µg |
| Target: | Prolactin (PRL) |
| Reactivity: | Human |
| Host: | Mouse |
| Clonality: | Monoclonal |
| Conjugate: | This Prolactin antibody is un-conjugated |
| Application: | ELISA, Immunohistochemistry (IHC) |

Product Details

| | |
|-------------------|-----------------------|
| Immunogen: | Recombinant Human PRL |
| Clone: | 4A2B3 |
| Isotype: | IgG1, IgG1 kappa |
| Cross-Reactivity: | Human |
| Purification: | Protein G purified |

Target Details

| | |
|-------------------|--|
| Target: | Prolactin (PRL) |
| Alternative Name: | PRL (PRL Products) |
| Background: | Background: This gene encodes the anterior pituitary hormone prolactin. This secreted hormone is a growth regulator for many tissues, including cells of the immune system. It may |

Target Details

also play a role in cell survival by suppressing apoptosis, and it is essential for lactation.
Alternative splicing results in multiple transcript variants that encode the same protein.
Aliases: PRL

| | |
|-----------|--|
| UniProt: | P01236 |
| Pathways: | JAK-STAT Signaling , Peptide Hormone Metabolism , Response to Growth Hormone Stimulus , Protein targeting to Nucleus |

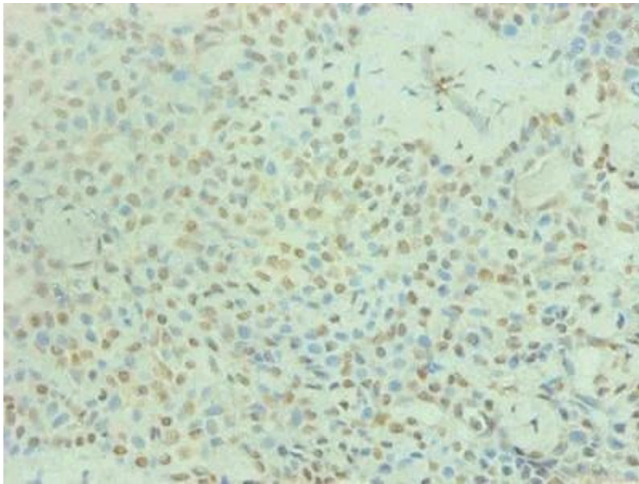
Application Details

| | |
|--------------------|--------------------------------------|
| Application Notes: | Recommended dilution:IHC:1:50-1:500, |
| Restrictions: | For Research Use only |

Handling

| | |
|--------------------|---|
| Format: | Liquid |
| Buffer: | Preservative: 0.03 % Proclin 300 Constituents: 50 % Glycerol, 0.01M PBS, PH 7.4 |
| Preservative: | ProClin |
| Precaution of Use: | This product contains ProClin: a POISONOUS AND HAZARDOUS SUBSTANCE which should be handled by trained staff only. |
| Storage: | -20 °C,-80 °C |
| Storage Comment: | Upon receipt, store at -20°C or -80°C. Avoid repeated freeze. |

Images



Immunohistochemistry

Image 1. Immunohistochemical of paraffin-embedded human breast cancer using ABIN7164287 at dilution of 1:200