



Datasheet for ABIN7164288

anti-Cathepsin H antibody (AA 116-219)



[Go to Product page](#)

3 Images

Overview

Quantity:	100 µg
Target:	Cathepsin H (CTSH)
Binding Specificity:	AA 116-219
Reactivity:	Human
Host:	Rabbit
Clonality:	Polyclonal
Conjugate:	This Cathepsin H antibody is un-conjugated
Application:	Western Blotting (WB), ELISA, Immunohistochemistry (IHC)

Product Details

Immunogen:	Recombinant Human Pro-cathepsin H protein (116-219AA)
Isotype:	IgG
Cross-Reactivity:	Human
Purification:	>95%, Protein G purified

Target Details

Target:	Cathepsin H (CTSH)
Alternative Name:	CTSH (CTSH Products)
Background:	Background: Important for the overall degradation of proteins in lysosomes. Aliases: ACC 4 antibody, ACC 5 antibody, ACC4 antibody, ACC5 antibody, aleurain antibody,

Target Details

CATH_HUMAN antibody, cathepsin B3 antibody, cathepsin BA antibody, Cathepsin H heavy chain antibody, Cathepsin H light chain antibody, Cathepsin H mini chain antibody, CPSB antibody, CTSH antibody, minichain antibody, N benzoylarginine beta naphthylamide hydrolase antibody, N-benzoylarginine-beta-naphthylamide hydrolase antibody, pro cathepsin H antibody

UniProt: [P09668](#)

Pathways: [Positive Regulation of Endopeptidase Activity](#)

Application Details

Application Notes: Recommended dilution: WB:1:500-1:5000, IHC:1:20-1:200,

Restrictions: For Research Use only

Handling

Format: Liquid

Buffer: Preservative: 0.03 % Proclin 300
Constituents: 50 % Glycerol, 0.01M PBS, pH 7.4

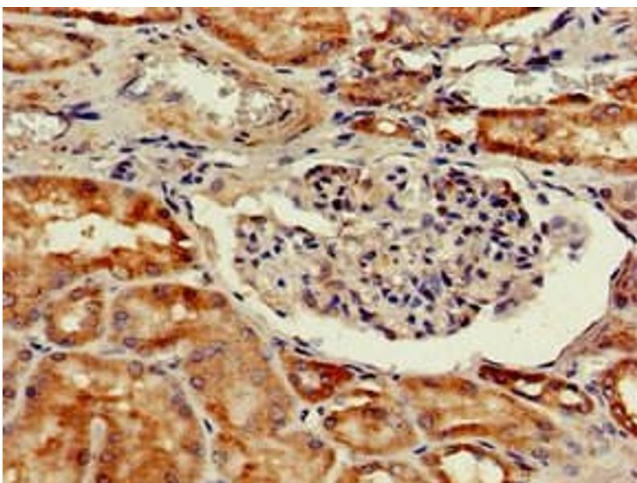
Preservative: ProClin

Precaution of Use: This product contains ProClin: a POISONOUS AND HAZARDOUS SUBSTANCE which should be handled by trained staff only.

Storage: -20 °C,-80 °C

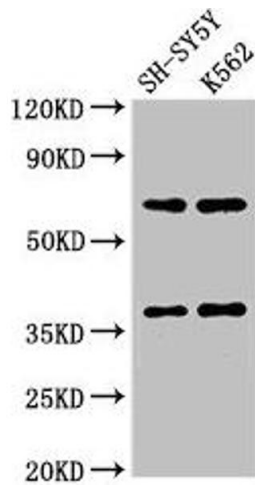
Storage Comment: Upon receipt, store at -20°C or -80°C. Avoid repeated freeze.

Images



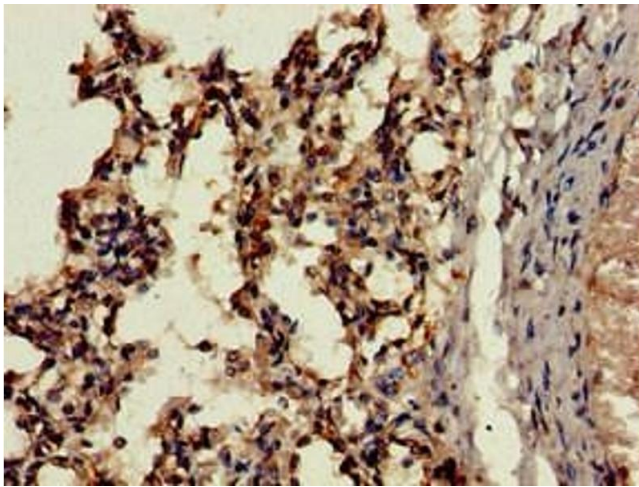
Immunohistochemistry

Image 1. Immunohistochemistry of paraffin-embedded human kidney tissue using ABIN7164288 at dilution of 1:100



Western Blotting

Image 2. Western Blot Positive WB detected in: SH-SY5Y whole cell lysate, K562 whole cell lysate All lanes: CTSH antibody at 2.7 $\mu\text{g}/\text{mL}$ Secondary Goat polyclonal to rabbit IgG at 1/50000 dilution Predicted band size: 38 kDa Observed band size: 38 kDa



Immunohistochemistry

Image 3. Immunohistochemistry of paraffin-embedded human lung tissue using ABIN7164288 at dilution of 1:100