



[Go to Product page](#)

Datasheet for ABIN7164296

anti-Neuropeptide FF antibody (AA 34-113)

2 Images

Overview

Quantity:	100 µL
Target:	Neuropeptide FF (NPFF)
Binding Specificity:	AA 34-113
Reactivity:	Human
Host:	Rabbit
Clonality:	Polyclonal
Conjugate:	This Neuropeptide FF antibody is un-conjugated
Application:	Immunohistochemistry (IHC), ELISA

Product Details

Immunogen:	Recombinant Human Pro-FMRFamide-related neuropeptide FF protein (34-113AA)
Isotype:	IgG
Cross-Reactivity:	Human
Purification:	Antigen Affinity Purified

Target Details

Target:	Neuropeptide FF (NPFF)
Alternative Name:	NPFF (NPFF Products)
Background:	Background: Morphine modulating peptides. Have wide-ranging physiologic effects, including the modulation of morphine-induced analgesia, elevation of arterial blood pressure, and

Target Details

increased somatostatin secretion from the pancreas. Neuropeptide FF potentiates and sensitizes ASIC1 and ASIC3 channels.

Aliases: NPFF antibody, Pro-FMRFamide-related neuropeptide FF antibody, FMRFamide-related peptides) [Cleaved into: Neuropeptide SF antibody, NPSF), Neuropeptide FF antibody, NPFF), Neuropeptide AF antibody, NPAF)] antibody

UniProt: [O15130](#)

Application Details

Application Notes: Recommended dilution: IHC:1:20-1:200,

Restrictions: For Research Use only

Handling

Format: Liquid

Buffer: PBS with 0.02 % sodium azide, 50 % glycerol, pH 7.3.

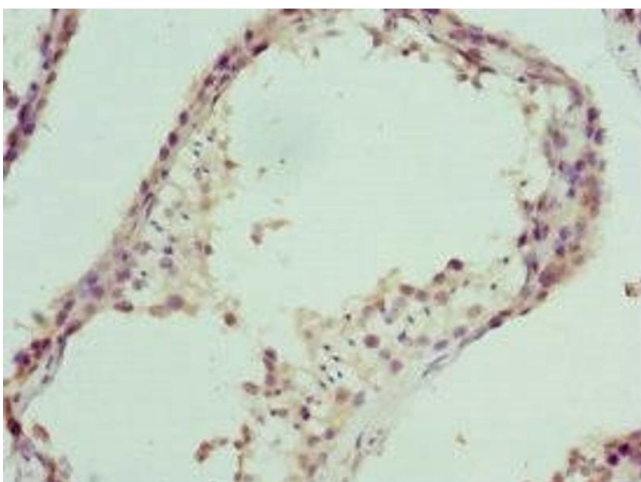
Preservative: Sodium azide

Precaution of Use: This product contains Sodium azide: a POISONOUS AND HAZARDOUS SUBSTANCE which should be handled by trained staff only.

Storage: -20 °C,-80 °C

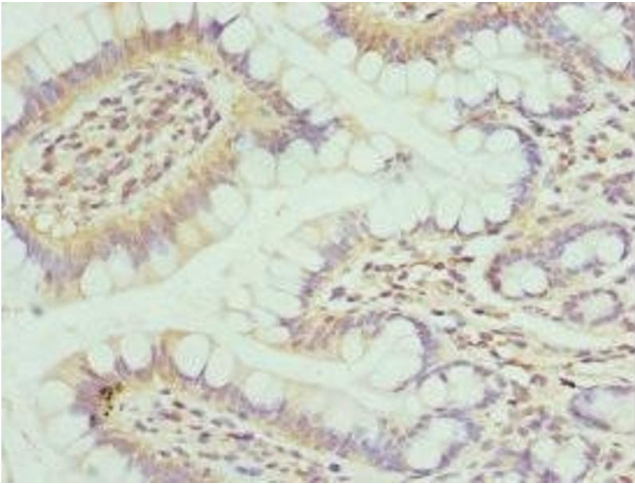
Storage Comment: Upon receipt, store at -20°C or -80°C. Avoid repeated freeze.

Images



Immunohistochemistry

Image 1. Immunohistochemistry of paraffin-embedded human testis tissue using ABIN7164296 at dilution of 1:100



Immunohistochemistry

Image 2. Immunohistochemistry of paraffin-embedded human small intestine tissue using ABIN7164296 at dilution of 1:100