



[Go to Product page](#)

Datasheet for ABIN7164385
anti-MTHFD2L antibody (AA 136-268)

1 Image

Overview

Quantity:	100 µg
Target:	MTHFD2L
Binding Specificity:	AA 136-268
Reactivity:	Human
Host:	Rabbit
Clonality:	Polyclonal
Conjugate:	This MTHFD2L antibody is un-conjugated
Application:	ELISA, Western Blotting (WB)

Product Details

Immunogen:	Recombinant Human Probable bifunctional methylenetetrahydrofolate dehydrogenase/cyclohydrolase 2 protein (136-268AA)
Isotype:	IgG
Cross-Reactivity:	Human, Mouse
Purification:	>95%, Protein G purified

Target Details

Target:	MTHFD2L
Alternative Name:	MTHFD2L (MTHFD2L Products)
Background:	Background: mitochondrion, methenyltetrahydrofolate cyclohydrolase activity,

Target Details

methylenetetrahydrofolate dehydrogenase (NAD+) activity, methylenetetrahydrofolate dehydrogenase (NADP+) activity, one-carbon metabolic process

Aliases: Methenyltetrahydrofolate cyclohydrolase antibody, Methylenetetrahydrofolate dehydrogenase (NADP+ dependent) 2-like antibody, MTD2L_HUMAN antibody, MTHFD2-like antibody, MTHFD2L antibody, NAD dependent methylenetetrahydrofolate dehydrogenase antibody, NADP-dependent methylenetetrahydrofolate dehydrogenase 2-like protein antibody, Probable bifunctional methylenetetrahydrofolate dehydrogenase/cyclohydrolase 2 antibody

UniProt: [Q9H903](#)

Application Details

Application Notes: Recommended dilution: WB:1:500-1:2000,

Restrictions: For Research Use only

Handling

Format: Liquid

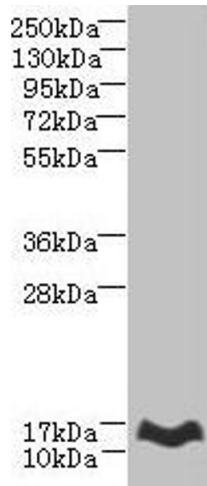
Buffer: Preservative: 0.03 % Proclin 300
Constituents: 50 % Glycerol, 0.01M PBS, PH 7.4

Preservative: ProClin

Precaution of Use: This product contains ProClin: a POISONOUS AND HAZARDOUS SUBSTANCE which should be handled by trained staff only.

Storage: -20 °C,-80 °C

Storage Comment: Upon receipt, store at -20°C or -80°C. Avoid repeated freeze.



Western Blotting

Image 1. Western blot All lanes: MTHFD2L antibody at 6 μ g/mL + Mouse lung tissue Secondary Goat polyclonal to rabbit IgG at 1/10000 dilution Predicted band size: 38, 32, 8, 25, 33 kDa Observed band size: 14 kDa