



[Go to Product page](#)

Datasheet for ABIN7164401
anti-SLC7A14 antibody (AA 676-771)

1 Image

Overview

Quantity:	100 µg
Target:	SLC7A14
Binding Specificity:	AA 676-771
Reactivity:	Human
Host:	Rabbit
Clonality:	Polyclonal
Conjugate:	This SLC7A14 antibody is un-conjugated
Application:	ELISA, Immunohistochemistry (IHC)

Product Details

Immunogen:	Recombinant Human Probable cationic amino acid transporter protein (676-771AA)
Isotype:	IgG
Cross-Reactivity:	Human
Purification:	>95%, Protein G purified

Target Details

Target:	SLC7A14
Alternative Name:	SLC7A14 (SLC7A14 Products)
Background:	Background: May be involved in arginine transport. Aliases: SLC7A14 antibody, KIAA1613 antibody, Probable cationic amino acid transporter

Target Details

antibody, Solute carrier family 7 member 14 antibody

UniProt: [Q8TBB6](#)

Application Details

Application Notes: Recommended dilution: IHC:1:20-1:200,

Restrictions: For Research Use only

Handling

Format: Liquid

Buffer: Preservative: 0.03 % Proclin 300
Constituents: 50 % Glycerol, 0.01M PBS, PH 7.4

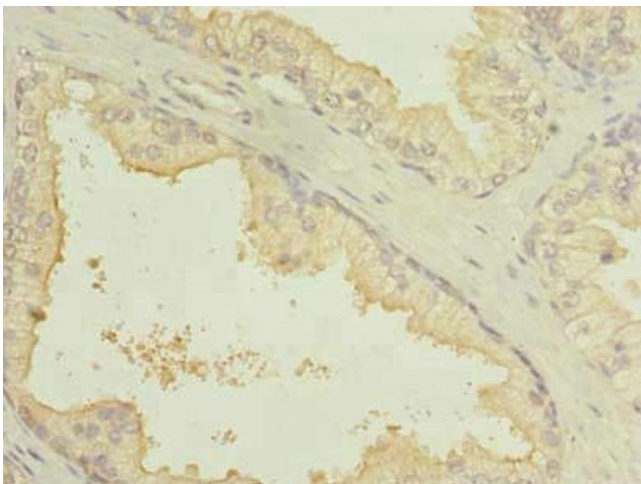
Preservative: ProClin

Precaution of Use: This product contains ProClin: a POISONOUS AND HAZARDOUS SUBSTANCE which should be handled by trained staff only.

Storage: -20 °C,-80 °C

Storage Comment: Upon receipt, store at -20°C or -80°C. Avoid repeated freeze.

Images



Immunohistochemistry

Image 1. Immunohistochemistry of paraffin-embedded human prostate cancer using ABIN7164401 at dilution of 1:100