



[Go to Product page](#)

Datasheet for ABIN7164441
anti-TRIM8 antibody (AA 367-517)

2 Images

Overview

Quantity:	100 µg
Target:	TRIM8
Binding Specificity:	AA 367-517
Reactivity:	Human
Host:	Rabbit
Clonality:	Polyclonal
Conjugate:	This TRIM8 antibody is un-conjugated
Application:	ELISA, Immunohistochemistry (IHC), Immunofluorescence (IF)

Product Details

Immunogen:	Recombinant Human Probable E3 ubiquitin-protein ligase TRIM8 protein (367-517AA)
Isotype:	IgG
Cross-Reactivity:	Human
Purification:	>95%, Protein G purified

Target Details

Target:	TRIM8
Alternative Name:	TRIM8 (TRIM8 Products)
Background:	Background: Probable E3 ubiquitin-protein ligase which may promote proteasomal degradation of SOCS1.

Target Details

Aliases: AA408830 antibody, BB006755 antibody, GERP antibody, Glioblastoma-expressed RING finger protein antibody, Lioblastoma expressed ring finger protein antibody, Probable E3 ubiquitin-protein ligase TRIM8 antibody, RING finger protein 27 antibody, RNF27 antibody, RP11-47A8.4 antibody, TRIM8 antibody, TRIM8_HUMAN antibody, Tripartite motif containing 8 antibody, Tripartite motif protein TRIM8 antibody, Tripartite motif-containing protein 8 antibody

UniProt: [Q9BZR9](#)

Application Details

Application Notes: Recommended dilution: IHC:1:200-1:500, IF:1:50-1:200,

Restrictions: For Research Use only

Handling

Format: Liquid

Buffer: Preservative: 0.03 % Proclin 300
Constituents: 50 % Glycerol, 0.01M PBS, pH 7.4

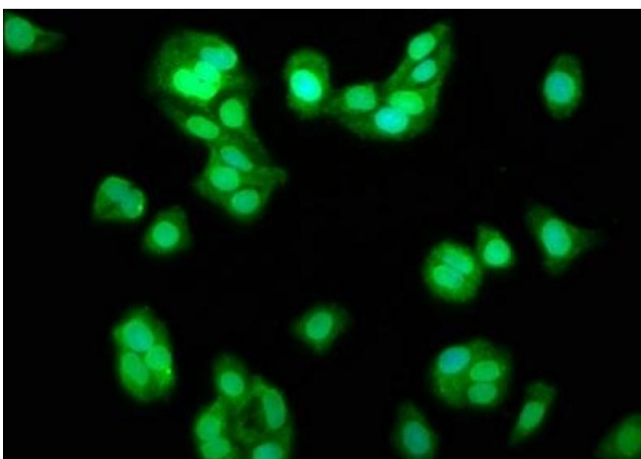
Preservative: ProClin

Precaution of Use: This product contains ProClin: a POISONOUS AND HAZARDOUS SUBSTANCE which should be handled by trained staff only.

Storage: -20 °C,-80 °C

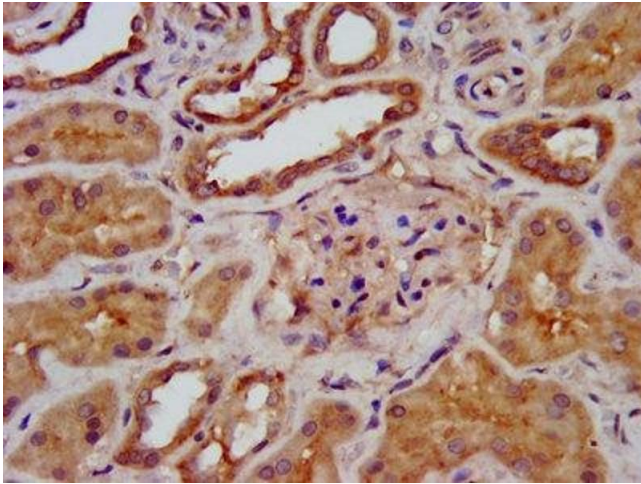
Storage Comment: Upon receipt, store at -20°C or -80°C. Avoid repeated freeze.

Images



Immunofluorescence

Image 1. Immunofluorescence staining of HepG2 cells with ABIN7164441 at 1:133, counter-stained with DAPI. The cells were fixed in 4% formaldehyde, permeabilized using 0.2% Triton X-100 and blocked in 10% normal Goat Serum. The cells were then incubated with the antibody overnight at 4°C. The secondary antibody was Alexa Fluor 488-conjugated AffiniPure Goat Anti-Rabbit IgG(H+L).



Immunohistochemistry

Image 2. IHC image of ABIN7164441 diluted at 1:400 and staining in paraffin-embedded human kidney tissue performed on a Leica Bond™ system. After dewaxing and hydration, antigen retrieval was mediated by high pressure in a citrate buffer (pH 6.0). Section was blocked with 10% normal goat serum 30min at RT. Then primary antibody (1% BSA) was incubated at 4°C overnight. The primary is detected by a biotinylated secondary antibody and visualized using an HRP conjugated SP system.