



[Go to Product page](#)

Datasheet for ABIN7164445  
**anti-TRIML1 antibody (AA 277-468)**

1 Image

### Overview

Quantity:	100 µg
Target:	TRIML1
Binding Specificity:	AA 277-468
Reactivity:	Human
Host:	Rabbit
Clonality:	Polyclonal
Conjugate:	This TRIML1 antibody is un-conjugated
Application:	ELISA, Western Blotting (WB)

### Product Details

Immunogen:	Recombinant Human Probable E3 ubiquitin-protein ligase TRIML1 protein (277-468AA)
Isotype:	IgG
Cross-Reactivity:	Human, Mouse
Purification:	>95%, Protein G purified

### Target Details

Target:	TRIML1
Alternative Name:	TRIML1 ( <a href="#">TRIML1 Products</a> )
Background:	Background: Probable E3 ubiquitin-protein ligase which plays an important role in blastocyst development.

## Target Details

Aliases: EC 6.3.2.- antibody, FLJ36180 antibody, MGC138638 antibody, MGC138639 antibody, Probable E3 ubiquitin-protein ligase TRIML1 antibody, RING finger protein 209 antibody, RNF209 antibody, TRIML\_HUMAN antibody, Triml1 antibody, Tripartite motif family like protein 1 antibody, Tripartite motif family-like protein 1 antibody

UniProt: [Q8N9V2](#)

## Application Details

Application Notes: Recommended dilution: WB:1:500-1:2000,

Restrictions: For Research Use only

## Handling

Format: Liquid

Buffer: Preservative: 0.03 % Proclin 300  
Constituents: 50 % Glycerol, 0.01M PBS, PH 7.4

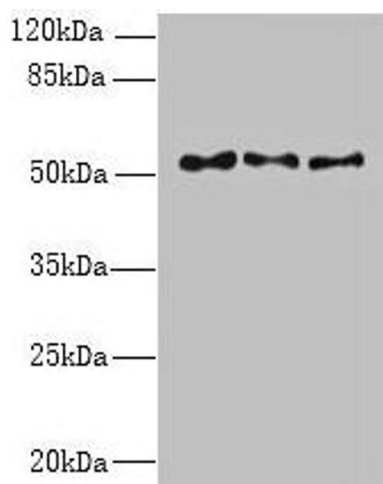
Preservative: ProClin

Precaution of Use: This product contains ProClin: a POISONOUS AND HAZARDOUS SUBSTANCE which should be handled by trained staff only.

Storage: -20 °C,-80 °C

Storage Comment: Upon receipt, store at -20°C or -80°C. Avoid repeated freeze.

## Images



### Western Blotting

**Image 1.** Western blot All lanes: TRIML1 antibody at 3  $\mu$ g/mL Lane 1: Mouse kidney tissue Lane 2: Human placenta tissue Lane 3: A431 whole cell lysate Secondary Goat polyclonal to rabbit IgG at 1/10000 dilution Predicted band size: 54 kDa Observed band size: 54 kDa