

Datasheet for ABIN7164521
anti-SMARCA2 antibody (AA 700-1216)[Go to Product page](#)

3 Images

Overview

Quantity:	100 µg
Target:	SMARCA2
Binding Specificity:	AA 700-1216
Reactivity:	Human
Host:	Rabbit
Clonality:	Polyclonal
Conjugate:	This SMARCA2 antibody is un-conjugated
Application:	ELISA, Immunohistochemistry (IHC), Chromatin Immunoprecipitation (ChIP)

Product Details

Immunogen:	Recombinant Human Probable global transcription activator SNF2L2 protein (700-1216AA)
Isotype:	IgG
Cross-Reactivity:	Human
Purification:	>95%, Protein G purified

Target Details

Target:	SMARCA2
Alternative Name:	SMARCA2 (SMARCA2 Products)
Background:	Background: Transcriptional coactivator cooperating with nuclear hormone receptors to potentiate transcriptional activation. Also involved in vitamin D-coupled transcription regulation

Target Details

via its association with the WINAC complex, a chromatin-remodeling complex recruited by vitamin D receptor (VDR), which is required for the ligand-bound VDR-mediated transrepression of the CYP27B1 gene. Belongs to the neural progenitors-specific chromatin remodeling complex (npBAF complex) and the neuron-specific chromatin remodeling complex (nBAF complex). During neural development a switch from a stem/progenitor to a post-mitotic chromatin remodeling mechanism occurs as neurons exit the cell cycle and become committed to their adult state. The transition from proliferating neural stem/progenitor cells to post-mitotic neurons requires a switch in subunit composition of the npBAF and nBAF complexes. As neural progenitors exit mitosis and differentiate into neurons, npBAF complexes which contain ACTL6A/BAF53A and PHF10/BAF45A, are exchanged for homologous alternative ACTL6B/BAF53B and DPF1/BAF45B or DPF3/BAF45C subunits in neuron-specific complexes (nBAF). The npBAF complex is essential for the self-renewal/proliferative capacity of the multipotent neural stem cells. The nBAF complex along with CREST plays a role regulating the activity of genes essential for dendrite growth.

Aliases: ATP dependent helicase SMARCA2 antibody, ATP-dependent helicase SMARCA2 antibody, BAF190 antibody, BAF190B antibody, BRG1-associated factor 190B antibody, BRM antibody, FLJ36757 antibody, Global transcription activator homologous sequence antibody, hBRM antibody, hSNF2a antibody, MGC74511 antibody, Possible global transcription activator SNF2L2 antibody, Probable global transcription activator SNF2L2 antibody, Protein brahma homolog antibody, SMARCA2 antibody, SMCA2_HUMAN antibody, SNF2 alpha antibody, SNF2 like 2 antibody, SNF2-alpha antibody, SNF2/SWI2 like protein 2 antibody, SNF2L2 antibody, SNF2LA antibody, Sth1p antibody, Sucrose nonfermenting 2 like protein 2 antibody, SWI/SNF related matrix associated actin dependent regulator of chromatin subfamily A member 2 antibody, SWI/SNF-related matrix-associated actin-dependent regulator of chromatin subfamily A member 2 antibody

UniProt: [P51531](#)

Application Details

Application Notes: Recommended dilution: IHC:1:20-1:200,

Restrictions: For Research Use only

Handling

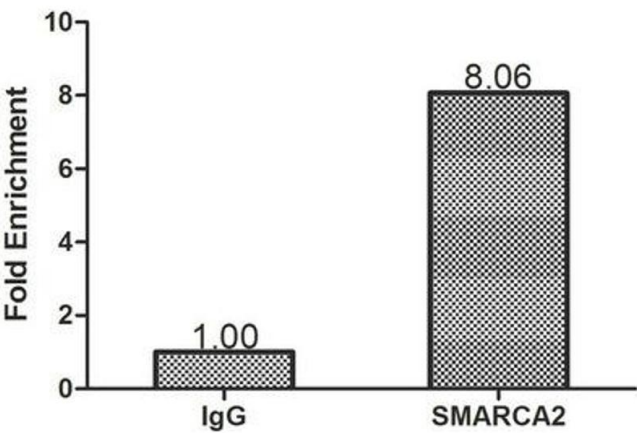
Format: Liquid

Buffer: Preservative: 0.03 % Proclin 300

Handling

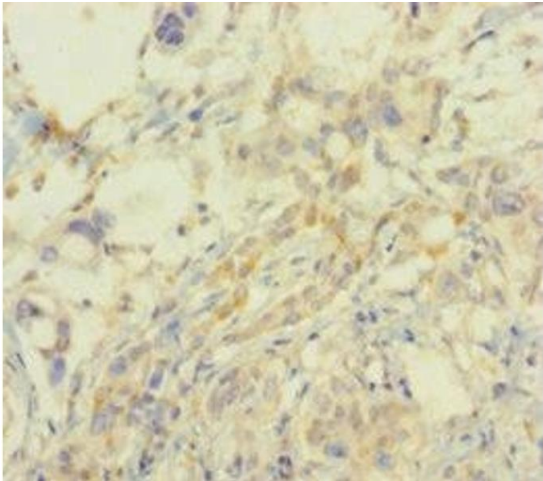
	Constituents: 50 % Glycerol, 0.01M PBS, PH 7.4
Preservative:	ProClin
Precaution of Use:	This product contains ProClin: a POISONOUS AND HAZARDOUS SUBSTANCE which should be handled by trained staff only.
Storage:	-20 °C,-80 °C
Storage Comment:	Upon receipt, store at -20°C or -80°C. Avoid repeated freeze.

Images



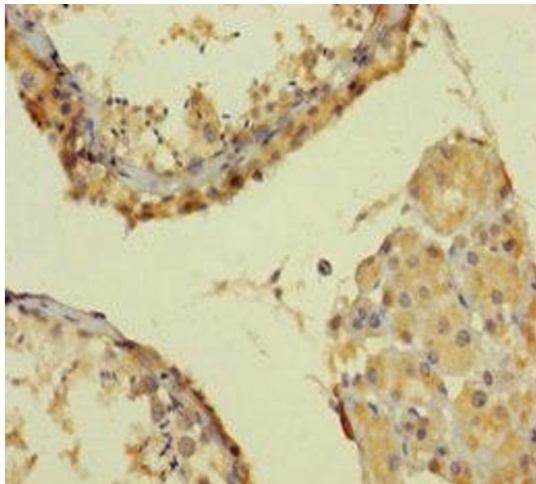
Immunohistochemistry

Image 1. Chromatin Immunoprecipitation Hela (1.1×10^6) were cross-linked with formaldehyde, sonicated, and immunoprecipitated with 4 μ g anti-SMARCA2 or a control normal rabbit IgG. The resulting ChIP DNA was quantified using real-time PCR with primers against the ESR1 pS2 promoter.



Immunohistochemistry

Image 2. Immunohistochemistry of paraffin-embedded human pancreatic cancer using ABIN7164521 at dilution of 1:100



Immunohistochemistry

Image 3. Immunohistochemistry of paraffin-embedded human testis tissue using ABIN7164521 at dilution of 1:100