



[Go to Product page](#)

Datasheet for ABIN7164562

anti-ZDHHC1 antibody (AA 283-389)

3 Images

Overview

Quantity:	100 µg
Target:	ZDHHC1
Binding Specificity:	AA 283-389
Reactivity:	Human
Host:	Rabbit
Clonality:	Polyclonal
Conjugate:	This ZDHHC1 antibody is un-conjugated
Application:	ELISA, Western Blotting (WB), Immunohistochemistry (IHC), Immunofluorescence (IF)

Product Details

Immunogen:	Recombinant Human Probable palmitoyltransferase ZDHHC1 protein (283-389AA)
Isotype:	IgG
Cross-Reactivity:	Human, Mouse
Purification:	>95%, Protein G purified

Target Details

Target:	ZDHHC1
Alternative Name:	ZDHHC1 (ZDHHC1 Products)
Background:	Background: endoplasmic reticulum, extracellular exosome, DNA binding, palmitoyltransferase activity, protein palmitoylation

Target Details

Aliases: C16orf1 antibody, DHHC domain containing cysteine rich protein antibody, DHHC domain-containing cysteine-rich protein 1 antibody, DHHC-1 antibody, HSU90653 antibody, Probable palmitoyltransferase ZDHHC1 antibody, ZDHC1_HUMAN antibody, Zdhhc1 antibody, Zinc finger DHHC domain containing 1 antibody, Zinc finger DHHC domain-containing protein 1 antibody, Zinc finger DHHC type containing 1 antibody, Zinc finger protein 377 antibody, ZNF377 antibody

UniProt: [Q8WTX9](#)

Application Details

Application Notes: Recommended dilution: WB:1:1000-1:5000, IHC:1:20-1:200, IF:1:50-1:200,

Restrictions: For Research Use only

Handling

Format: Liquid

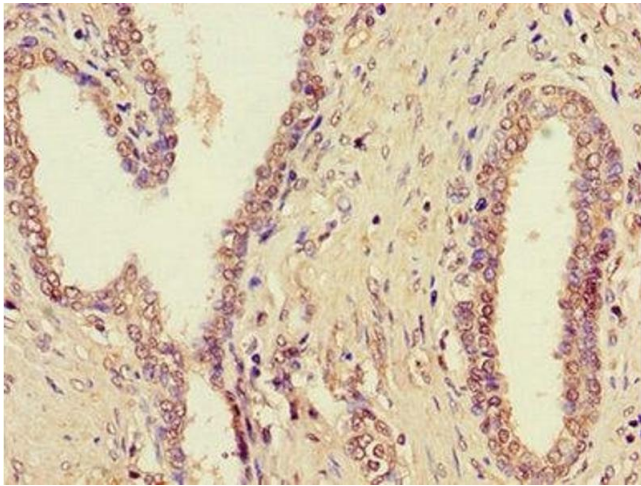
Buffer: Preservative: 0.03 % Proclin 300
Constituents: 50 % Glycerol, 0.01M PBS, PH 7.4

Preservative: ProClin

Precaution of Use: This product contains ProClin: a POISONOUS AND HAZARDOUS SUBSTANCE which should be handled by trained staff only.

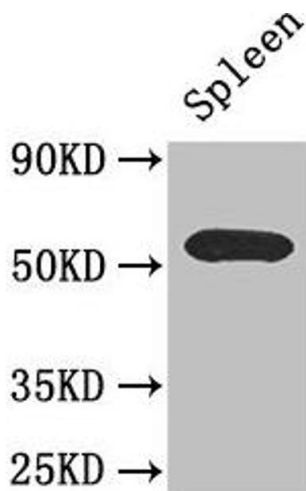
Storage: -20 °C,-80 °C

Storage Comment: Upon receipt, store at -20°C or -80°C. Avoid repeated freeze.



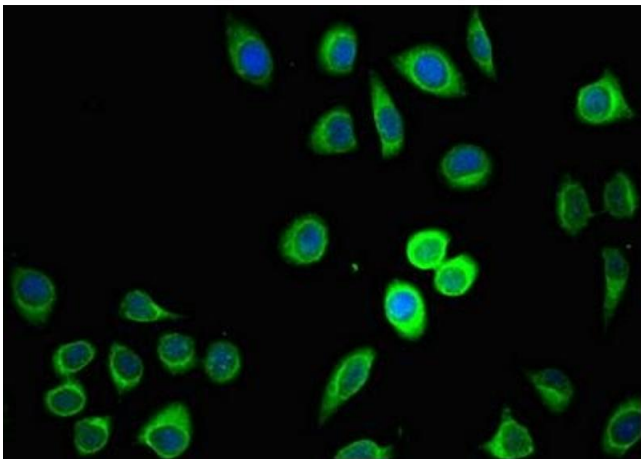
Immunohistochemistry

Image 1. Immunohistochemistry of paraffin-embedded human prostate cancer using ABIN7164562 at dilution of 1:100



Western Blotting

Image 2. Western Blot Positive WB detected in: Mouse spleen tissue All lanes: C16orf1 antibody at 2.6 µg/mL Secondary Goat polyclonal to rabbit IgG at 1/50000 dilution Predicted band size: 55 kDa Observed band size: 55 kDa



Immunofluorescence

Image 3. Immunofluorescent analysis of A549 cells using ABIN7164562 at dilution of 1:100 and Alexa Fluor 488-conjugated AffiniPure Goat Anti-Rabbit IgG(H+L)