

Datasheet for ABIN7164602  
**anti-SLC17A4 antibody (AA 14-57)**[Go to Product page](#)

## 1 Image

## Overview

Quantity:	100 µg
Target:	SLC17A4
Binding Specificity:	AA 14-57
Reactivity:	Human
Host:	Rabbit
Clonality:	Polyclonal
Conjugate:	This SLC17A4 antibody is un-conjugated
Application:	ELISA, Immunofluorescence (IF)

## Product Details

Immunogen:	Recombinant Human Probable small intestine urate exporter protein (14-57AA)
Isotype:	IgG
Cross-Reactivity:	Human
Purification:	>95%, Protein G purified

## Target Details

Target:	SLC17A4
Alternative Name:	SLC17A4 ( <a href="#">SLC17A4 Products</a> )
Background:	Background: Acts as a membrane potential-dependent organic anion transporter, the transport requires a low concentration of chloride ions. May be involved in urate extrusion from the

## Target Details

intestinal duct. May recognize hydrophilic anionic drugs such as aspirin, salicylate, and ibuprofen as substrates. Able to actively transport inorganic phosphate into cells via Na(+) cotransport (in vitro).

Aliases: SLC17A4 antibody, Probable small intestine urate exporter antibody, Solute carrier family 17 member 4 antibody

UniProt: [Q9Y2C5](#)

## Application Details

Application Notes: Recommended dilution: IF:1:50-1:200,

Restrictions: For Research Use only

## Handling

Format: Liquid

Buffer: Preservative: 0.03 % Proclin 300  
Constituents: 50 % Glycerol, 0.01M PBS, PH 7.4

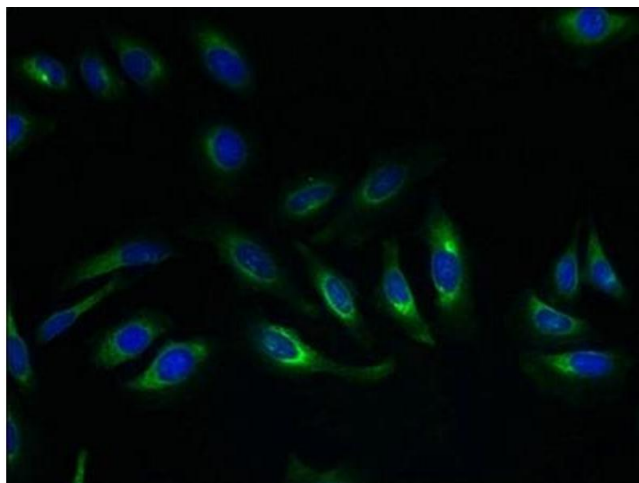
Preservative: ProClin

Precaution of Use: This product contains ProClin: a POISONOUS AND HAZARDOUS SUBSTANCE which should be handled by trained staff only.

Storage: -20 °C,-80 °C

Storage Comment: Upon receipt, store at -20°C or -80°C. Avoid repeated freeze.

## Images



### Immunofluorescence

**Image 1.** Immunofluorescent analysis of HeLa cells using ABIN7164602 at dilution of 1:100 and Alexa Fluor 488-conjugated AffiniPure Goat Anti-Rabbit IgG(H+L)