



Datasheet for ABIN7164606
anti-SLC38A6 antibody (AA 132-169)



[Go to Product page](#)

2 Images

Overview

Quantity:	100 µg
Target:	SLC38A6
Binding Specificity:	AA 132-169
Reactivity:	Human
Host:	Rabbit
Clonality:	Polyclonal
Conjugate:	This SLC38A6 antibody is un-conjugated
Application:	ELISA, Western Blotting (WB), Immunofluorescence (IF)

Product Details

Immunogen:	Recombinant Human Probable sodium-coupled neutral amino acid transporter 6 protein (132-169AA)
Isotype:	IgG
Cross-Reactivity:	Human, Mouse
Purification:	>95%, Protein G purified

Target Details

Target:	SLC38A6
Alternative Name:	SLC38A6 (SLC38A6 Products)
Background:	Background: Probable sodium-dependent amino acid/proton antiporter, could be a neuronal

Target Details

transporter for glutamate.

Aliases: N system amino acid transporter NAT-1 antibody, N-system amino acid transporter 1 antibody, Na(+)-coupled neutral amino acid transporter 6 antibody, NAT-1 antibody, NAT1 antibody, Probable sodium-coupled neutral amino acid transporter 6 antibody, S38A6_HUMAN antibody, SLC38A6 antibody, SNAT1 antibody, Solute carrier family 38 member 6 antibody

UniProt: [Q8IZM9](#)

Application Details

Application Notes: Recommended dilution: WB:1:1000-1:5000, IF:1:50-1:200,

Restrictions: For Research Use only

Handling

Format: Liquid

Buffer: Preservative: 0.03 % Proclin 300
Constituents: 50 % Glycerol, 0.01M PBS, PH 7.4

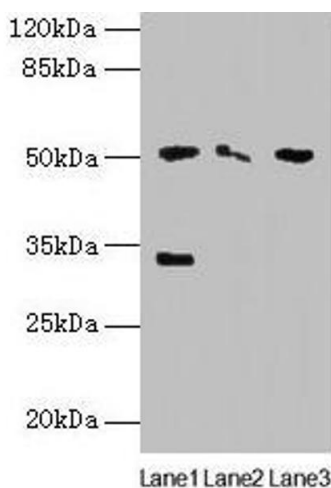
Preservative: ProClin

Precaution of Use: This product contains ProClin: a POISONOUS AND HAZARDOUS SUBSTANCE which should be handled by trained staff only.

Storage: -20 °C,-80 °C

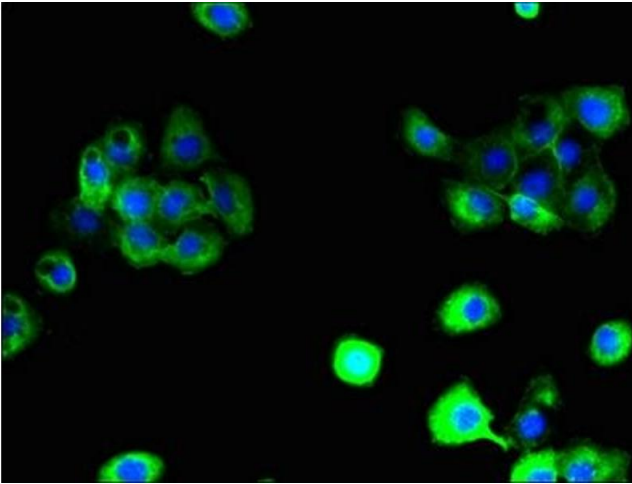
Storage Comment: Upon receipt, store at -20°C or -80°C. Avoid repeated freeze.

Images



Western Blotting

Image 1. Western blot All lanes: SLC38A6 antibody at 12 μ g/mL Lane 1: Mouse kidney tissue Lane 2: Mouse thymus tissue Lane 3: U87 whole cell lysate Secondary Goat polyclonal to rabbit IgG at 1/10000 dilution Predicted band size: 51, 58 kDa Observed band size: 51, 33 kDa



Immunofluorescence

Image 2. Immunofluorescent analysis of A431 cells using ABIN7164606 at dilution of 1:100 and Alexa Fluor 488-conjugated AffiniPure Goat Anti-Rabbit IgG(H+L)