

Datasheet for ABIN7164633
anti-PCOLCE antibody (AA 169-449)[Go to Product page](#)

1 Image

Overview

Quantity:	100 µL
Target:	PCOLCE
Binding Specificity:	AA 169-449
Reactivity:	Human
Host:	Rabbit
Clonality:	Polyclonal
Conjugate:	This PCOLCE antibody is un-conjugated
Application:	Immunohistochemistry (IHC), ELISA

Product Details

Immunogen:	Recombinant Human Procollagen C-endopeptidase enhancer 1 protein (169-449AA)
Isotype:	IgG
Cross-Reactivity:	Human
Purification:	Antigen Affinity Purified

Target Details

Target:	PCOLCE
Alternative Name:	PCOLCE (PCOLCE Products)
Background:	Background: Binds to the C-terminal propeptide of type I procollagen and enhances procollagen C-proteinase activity.

Target Details

Aliases: PCOC1_HUMAN antibody, Pcolce antibody, PCOLE 1 antibody, PCOLE1 antibody, PCPE antibody, PCPE-1 antibody, PCPE1 antibody, Procollagen C endopeptidase enhancer antibody, Procollagen C-endopeptidase enhancer 1 antibody, Procollagen C-endopeptidase enhancer antibody, Procollagen C-proteinase enhancer 1 antibody, Procollagen COOH-terminal proteinase enhancer 1 antibody, procollagen, type 1, COOH-terminal proteinase enhancer antibody, Type 1 procollagen C-proteinase enhancer protein antibody, Type I procollagen COOH-terminal proteinase enhancer antibody

UniProt: [Q15113](#)

Application Details

Application Notes: Recommended dilution: IHC:1:20-1:200,

Restrictions: For Research Use only

Handling

Format: Liquid

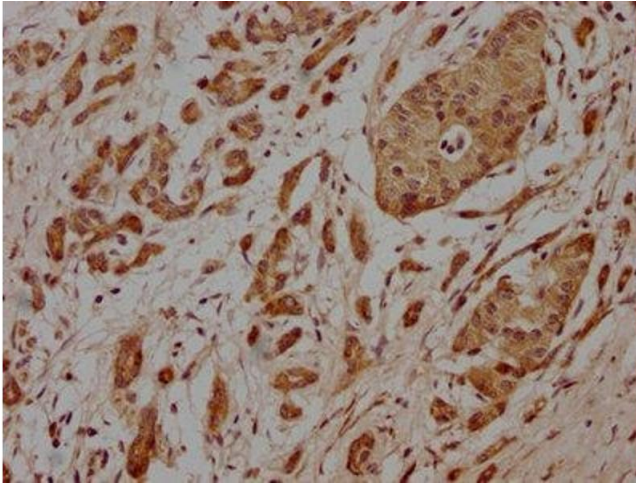
Buffer: Preservative: 0.03 % Proclin 300
Constituents: 50 % Glycerol, 0.01M PBS, pH 7.4

Preservative: ProClin

Precaution of Use: This product contains ProClin: a POISONOUS AND HAZARDOUS SUBSTANCE which should be handled by trained staff only.

Storage: -20 °C, -80 °C

Storage Comment: Upon receipt, store at -20°C or -80°C. Avoid repeated freeze.



Immunohistochemistry

Image 1. IHC image of ABIN7164633 diluted at 1:100 and staining in paraffin-embedded human pancreatic cancer performed on a Leica Bond™ system. After dewaxing and hydration, antigen retrieval was mediated by high pressure in a citrate buffer (pH 6.0). Section was blocked with 10 % normal goat serum 30 min at RT. Then primary antibody (1 % BSA) was incubated at 4 °C overnight. The primary is detected by a biotinylated secondary antibody and visualized using an HRP conjugated SP system.