



[Go to Product page](#)

Datasheet for ABIN7164657
anti-PFN1 antibody (AA 2-140)

1 Image

Overview

Quantity:	100 µg
Target:	PFN1
Binding Specificity:	AA 2-140
Reactivity:	Human
Host:	Rabbit
Clonality:	Polyclonal
Conjugate:	This PFN1 antibody is un-conjugated
Application:	Western Blotting (WB), ELISA

Product Details

Immunogen:	Recombinant Human Profilin-1 protein (2-140AA)
Isotype:	IgG
Cross-Reactivity:	Human
Purification:	>95%, Protein G purified

Target Details

Target:	PFN1
Alternative Name:	PFN1 (PFN1 Products)
Background:	Background: Binds to actin and affects the structure of the cytoskeleton. At high concentrations, profilin prevents the polymerization of actin, whereas it enhances it at low

Target Details

concentrations. By binding to PIP2, it inhibits the formation of IP3 and DG.

Aliases: Actin binding protein antibody, ALS18 antibody, Epididymis tissue protein Li 184a antibody, OTTHUMP00000125244 antibody, PFN 1 antibody, Pfn antibody, PFN1 antibody, PROF1_HUMAN antibody, Profilin I antibody, Profilin-1 antibody, Profilin1 antibody, ProfilinI antibody

UniProt: [P07737](#)

Pathways: [Regulation of Actin Filament Polymerization](#), [Tube Formation](#), [Maintenance of Protein Location](#)

Application Details

Application Notes: Recommended dilution: WB:1:1000-1:5000,

Restrictions: For Research Use only

Handling

Format: Liquid

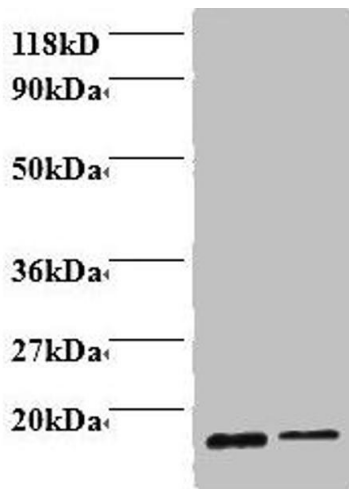
Buffer: Preservative: 0.03 % Proclin 300
Constituents: 50 % Glycerol, 0.01M PBS, PH 7.4

Preservative: ProClin

Precaution of Use: This product contains ProClin: a POISONOUS AND HAZARDOUS SUBSTANCE which should be handled by trained staff only.

Storage: -20 °C,-80 °C

Storage Comment: Upon receipt, store at -20°C or -80°C. Avoid repeated freeze.



Western Blotting

Image 1. Western blot All lanes: Profilin-1 antibody at 2 μ g/mL Lane 1: EC109 whole cell lysate Lane 2: 293T whole cell lysate Secondary Goat polyclonal to rabbit IgG at 1/15000 dilution Predicted band size: 16 kDa Observed band size: 16 kDa