

Datasheet for ABIN7164665
anti-PIBF1 antibody (AA 1-757)[Go to Product page](#)

2 Images

Overview

Quantity:	100 µL
Target:	PIBF1
Binding Specificity:	AA 1-757
Reactivity:	Human
Host:	Rabbit
Clonality:	Polyclonal
Conjugate:	This PIBF1 antibody is un-conjugated
Application:	Western Blotting (WB), ELISA, Immunofluorescence (IF)

Product Details

Immunogen:	Recombinant Human Progesterone-induced-blocking factor 1 protein (1-757AA)
Isotype:	IgG
Cross-Reactivity:	Human
Purification:	>95%, Protein G purified

Target Details

Target:	PIBF1
Alternative Name:	PIBF1 (PIBF1 Products)
Background:	Background: Isoform 1: Pericentriolar protein required to maintain mitotic spindle pole integrity (PubMed:21224392). Required for the centrosomal accumulation of PCM1 and the recruitment

Target Details

of centriolar satellite proteins such as BBS4. Via association with PCM1 may be involved in primary cilia formation (PubMed:23110211). Required for CEP63 centrosomal localization and its interaction with WDR62. Together with CEP63 promotes centriole duplication. Promotes the centrosomal localization of CDK2 (PubMed:26297806).

Aliases: C13orf24 antibody, KIAA1008 antibody, PIBF 1 antibody, PIBF antibody, PIBF1 antibody, PIBF1_HUMAN antibody, Progesterone immunomodulatory binding factor 1 antibody, Progesterone induced blocking factor 1 antibody, Progesterone-induced-blocking factor 1 antibody, RP11 505F3.1 antibody

UniProt: [Q8WXW3](#)

Application Details

Application Notes: Recommended dilution: WB:1:1000-1:5000, IF:1:100-1:500,

Restrictions: For Research Use only

Handling

Format: Liquid

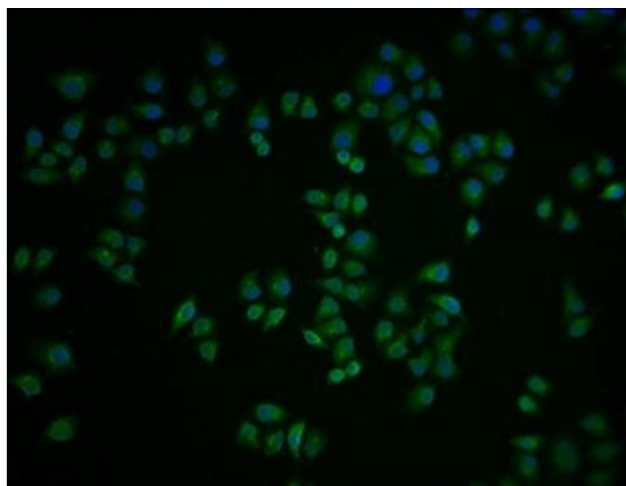
Buffer: Preservative: 0.03 % Proclin 300
Constituents: 50 % Glycerol, 0.01M PBS, PH 7.4

Preservative: ProClin

Precaution of Use: This product contains ProClin: a POISONOUS AND HAZARDOUS SUBSTANCE which should be handled by trained staff only.

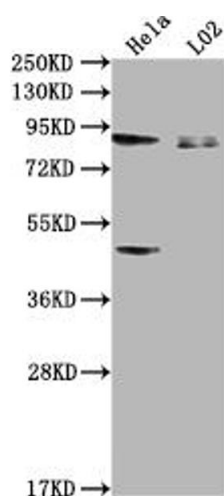
Storage: -20 °C,-80 °C

Storage Comment: Upon receipt, store at -20°C or -80°C. Avoid repeated freeze.



Immunofluorescence

Image 1. Immunofluorescence staining of HeLa cells with ABIN7164665 at 1:100, counter-stained with DAPI. The cells were fixed in 4 % formaldehyde and blocked in 10 % normal Goat Serum. The cells were then incubated with the antibody overnight at 4 °C. The secondary antibody was Alexa Fluor 488-conjugated AffiniPure Goat Anti-Rabbit IgG(H+L).



Western Blotting

Image 2. Western Blot Positive WB detected in: HeLa whole cell lysate, L02 whole cell lysate All lanes: PIBF1 antibody at 1:2000 Secondary Goat polyclonal to rabbit IgG at 1/50000 dilution Predicted band size: 90, 26, 13, 36 kDa Observed band size: 90 kDa