

Datasheet for ABIN7164674
anti-PD-L1 antibody (AA 19-238)

9 Images

[Go to Product page](#)

Overview

Quantity:	100 µL
Target:	PD-L1
Binding Specificity:	AA 19-238
Reactivity:	Human
Host:	Mouse
Clonality:	Monoclonal
Conjugate:	This PD-L1 antibody is un-conjugated
Application:	Western Blotting (WB), Flow Cytometry (FACS), Immunohistochemistry (IHC), ELISA, Immunofluorescence (IF)

Product Details

Immunogen:	Recombinant Human Programmed cell death 1 ligand 1 protein (19-238AA)
Clone:	9B5F4
Isotype:	IgG2b
Cross-Reactivity:	Human
Purification:	Protein G purified

Target Details

Target:	PD-L1
Alternative Name:	PD-L1 (PD-L1 Products)

Target Details

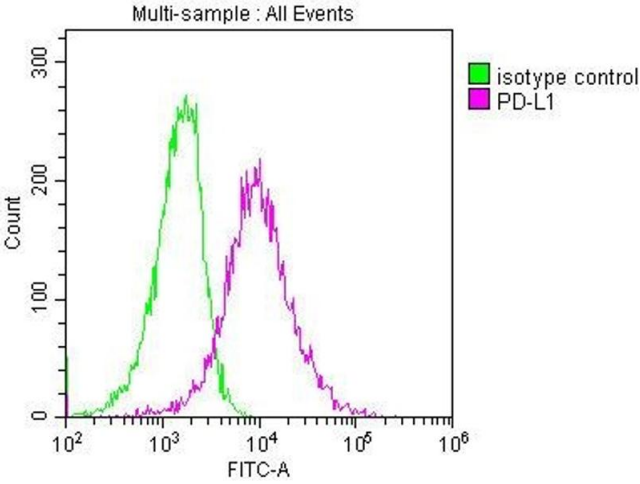
Background:	<p>Background: Plays a critical role in induction and maintenance of immune tolerance to self. As a ligand for the inhibitory receptor PDCD1/CD279, modulates the activation threshold of T-cells and limits T-cell effector response (PubMed:11015443). The PDCD1/CD279-mediated inhibitory pathway is exploited by tumors to attenuate anti-tumor immunity and facilitate tumor survival (PubMed:28813417, PubMed:28813410). Through a yet unknown activating receptor, may costimulate T-cell subsets that predominantly produce interleukin-10 (IL10) (PubMed:10581077)</p> <p>Aliases: Programmed cell death 1 ligand 1 (PD-L1) (PDCD1 ligand 1) (Programmed death ligand 1) (B7 homolog 1) (B7-H1) (CD antigen CD274), CD274, B7H1 PDCD1L1 PDCD1LG1 PDL1</p>
UniProt:	Q9NZQ7
Pathways:	Cancer Immune Checkpoints

Application Details

Application Notes:	Recommended dilution: WB:1:1000-1:5000, IHC:1:50-1:200, IF:1:50-1:200, FC:1:100-1:300,
Restrictions:	For Research Use only

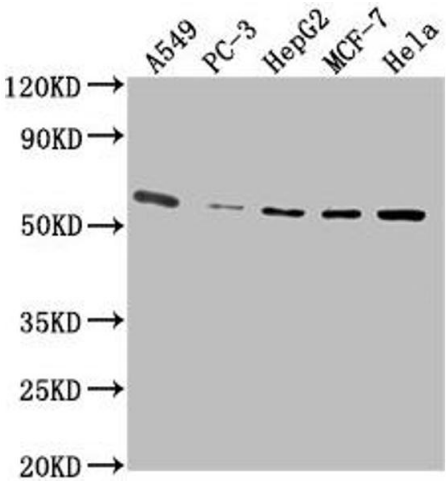
Handling

Format:	Liquid
Buffer:	Preservative: 0.03 % Proclin 300 Constituents: 50 % Glycerol, 0.01M PBS, PH 7.4
Preservative:	ProClin
Precaution of Use:	This product contains ProClin: a POISONOUS AND HAZARDOUS SUBSTANCE which should be handled by trained staff only.
Storage:	-20 °C,-80 °C
Storage Comment:	Upon receipt, store at -20°C or -80°C. Avoid repeated freeze.



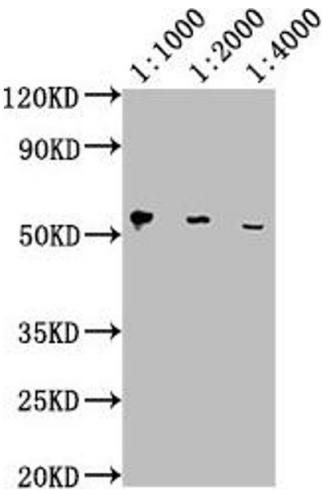
Flow Cytometry

Image 1. Overlay histogram showing A549 cells stained with ABIN7164674 (red line) at 1:150. The cells were incubated in 1x PBS /10 % normal goat serum to block non-specific protein-protein interactions followed by primary antibody for 1 h at 4 °C. The secondary antibody used was FITC goat anti-mouse IgG(H+L) at 1/200 dilution for 1 h at 4 °C. Isotype control antibody (green line) was used under the same conditions. Acquisition of >10,000 events was performed.



Western Blotting

Image 2. Western Blot Positive WB detected in: A549 whole cell lysate, PC-3 whole cell lysate, HepG2 whole cell lysate, MCF-7 whole cell lysate, HeLa whole cell lysate All lanes: PD-L1 antibody at 1:2500 Secondary Goat polyclonal to Mouse IgG at 1/10000 dilution Predicted band size: 33 kDa Observed band size: 55 kDa



Western Blotting

Image 3. Western Blot Positive WB detected in: HeLa whole cell lysate All lanes: PD-L1 antibody at 1:1000, 1:2000, 1:4000 Secondary Goat polyclonal to Mouse IgG at 1/10000 dilution Predicted band size: 33 kDa Observed band size: 55 kDa

Please check the [product details page](#) for more images. Overall 9 images are available for ABIN7164674.