



[Go to Product page](#)

Datasheet for ABIN7164683  
**anti-PD-1 antibody (AA 21-170)**

3 Images

### Overview

Quantity:	100 µg
Target:	PD-1 (PDCD1)
Binding Specificity:	AA 21-170
Reactivity:	Human
Host:	Rabbit
Clonality:	Polyclonal
Conjugate:	This PD-1 antibody is un-conjugated
Application:	Western Blotting (WB), Immunohistochemistry (IHC), ELISA, Immunofluorescence (IF)

### Product Details

Immunogen:	Recombinant Human Programmed cell death protein 1 protein (21-170AA)
Isotype:	IgG
Cross-Reactivity:	Human, Mouse
Purification:	>95%, Protein G purified

### Target Details

Target:	PD-1 (PDCD1)
Alternative Name:	PDCD1 ( <a href="#">PDCD1 Products</a> )
Background:	Background: Inhibitory cell surface receptor involved in the regulation of T-cell function during immunity and tolerance. Upon ligand binding, inhibits T-cell effector functions in an antigen-

## Target Details

---

specific manner. Possible cell death inducer, in association with other factors.

Aliases: CD279 antibody, CD279 antigen antibody, hPD 1 antibody, hPD I antibody, hPD-1 antibody, hSLE1 antibody, PD 1 antibody, PD-1 antibody, PD1 antibody, PDCD 1 antibody, PDCD1 antibody, PDCD1\_HUMAN antibody, Programmed cell death 1 antibody, Programmed cell death 1 protein antibody, Programmed cell death protein 1 antibody, Protein PD 1 antibody, Protein PD-1 antibody, SLEB2 antibody, Systemic lupus erythematosus susceptibility 2 antibody

---

UniProt: [Q15116](#)

---

Pathways: [Cancer Immune Checkpoints](#)

## Application Details

---

---

Application Notes: Recommended dilution: WB:1:1000-1:5000, IHC:1:20-1:200, IF:1:50-1:200,

---

Restrictions: For Research Use only

## Handling

---

---

Format: Liquid

---

Buffer: Preservative: 0.03 % Proclin 300  
Constituents: 50 % Glycerol, 0.01M PBS, PH 7.4

---

Preservative: ProClin

---

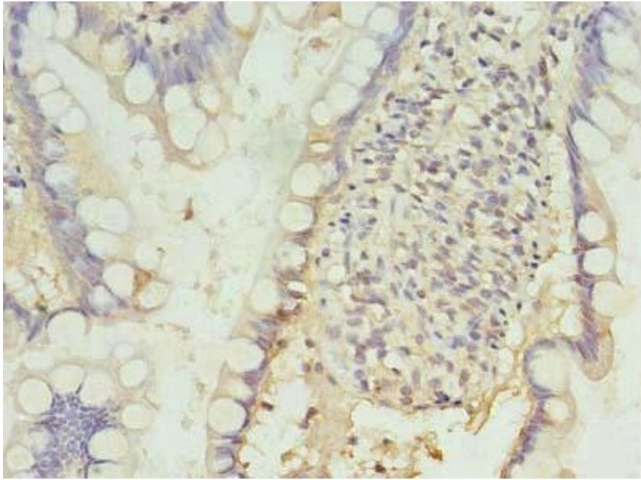
Precaution of Use: This product contains ProClin: a POISONOUS AND HAZARDOUS SUBSTANCE which should be handled by trained staff only.

---

Storage: -20 °C,-80 °C

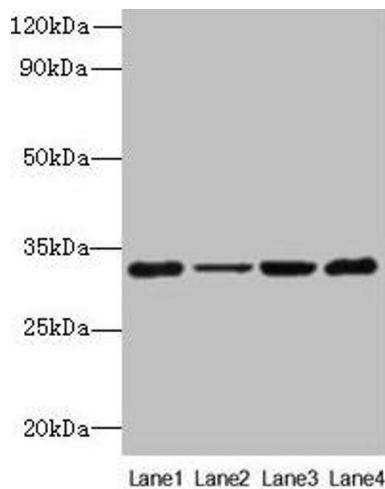
---

Storage Comment: Upon receipt, store at -20°C or -80°C. Avoid repeated freeze.



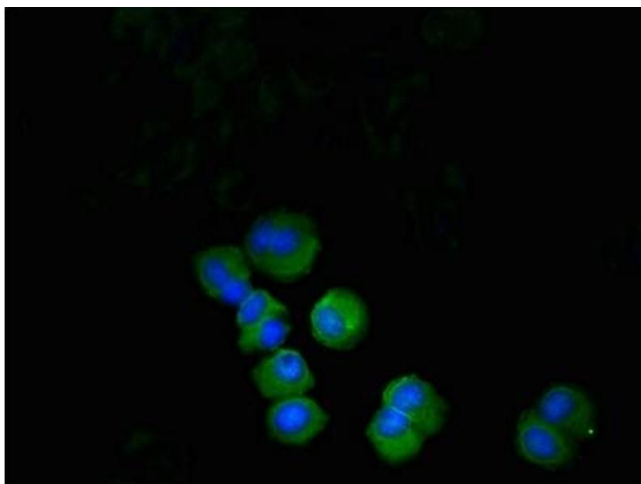
### Immunohistochemistry

**Image 1.** Immunohistochemistry of paraffin-embedded human small intestine tissue using ABIN7164683 at dilution of 1:100



### Western Blotting

**Image 2.** Western blot All lanes: PDCD1 antibody at 6 µg/mL  
Lane 1: 293T whole cell lysate Lane 2: Hela whole cell lysate  
Lane 3: K562 whole cell lysate Lane 4: Mouse stomach tissue  
Secondary Goat polyclonal to rabbit IgG at 1/10000 dilution  
Predicted band size: 32 kDa Observed band size: 32 kDa



### Immunofluorescence

**Image 3.** Immunofluorescent analysis of MCF-7 cells using ABIN7164683 at dilution of 1: 100 and Alexa Fluor 488-conjugated AffiniPure Goat Anti-Rabbit IgG(H+L)