

Datasheet for ABIN7164742

anti-Ki-67 antibody (AA 3120-3256)[Go to Product page](#)**2** Images

Overview

Quantity:	100 µg
Target:	Ki-67 (MKI67)
Binding Specificity:	AA 3120-3256
Reactivity:	Human
Host:	Rabbit
Clonality:	Polyclonal
Conjugate:	This Ki-67 antibody is un-conjugated
Application:	Immunohistochemistry (IHC), ELISA

Product Details

Immunogen:	Recombinant Human Proliferation marker protein Ki-67 protein (3120-3256AA)
Isotype:	IgG
Cross-Reactivity:	Human
Purification:	>95%, Protein G purified

Target Details

Target:	Ki-67 (MKI67)
Alternative Name:	MKI67 (MKI67 Products)
Background:	Background: Required to maintain individual mitotic chromosomes dispersed in the cytoplasm following nuclear envelope disassembly (PubMed:27362226). Associates with the surface of

Target Details

the mitotic chromosome, the perichromosomal layer, and covers a substantial fraction of the chromosome surface (PubMed:27362226). Prevents chromosomes from collapsing into a single chromatin mass by forming a steric and electrostatic charge barrier: the protein has a high net electrical charge and acts as a surfactant, dispersing chromosomes and enabling independent chromosome motility (PubMed:27362226). Binds DNA, with a preference for supercoiled DNA and AT-rich DNA (PubMed:10878551). Does not contribute to the internal structure of mitotic chromosomes (By similarity). May play a role in chromatin organization (PubMed:24867636). It is however unclear whether it plays a direct role in chromatin organization or whether it is an indirect consequence of its function in maintaining mitotic chromosomes dispersed (Probable).

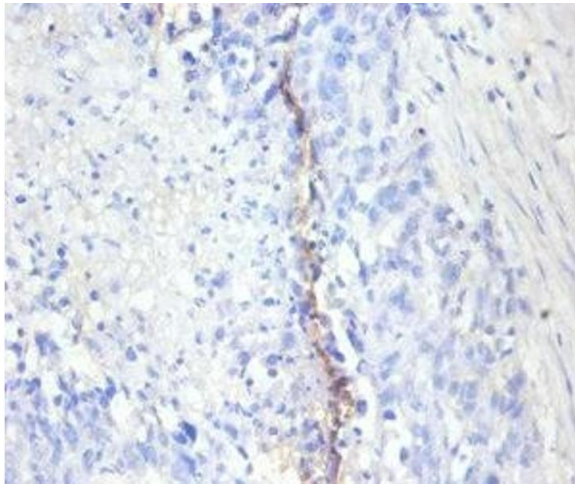
Aliases: Antigen identified by monoclonal antibody Ki 67 antibody, Antigen identified by monoclonal antibody Ki-67 antibody, Antigen KI-67 antibody, Antigen KI67 antibody, Antigen Ki67 antibody, KI67_HUMAN antibody, KIA antibody, Marker of proliferation Ki-67 antibody, MIB 1 antibody, MIB antibody, MKI67 antibody, PPP1R105 antibody, Proliferation marker protein Ki-67 antibody, Proliferation related Ki 67 antigen antibody, Protein phosphatase 1 regulatory subunit 105 antibody, RP11-380J17.2 antibody

UniProt: [P46013](#)

Pathways: [Glycosaminoglycan Metabolic Process](#)

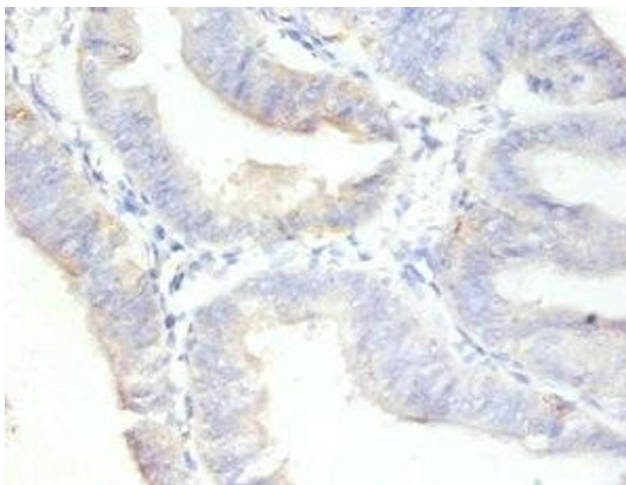
Application Details

Application Notes:	Recommended dilution: IHC:1:20-1:200,
Restrictions:	For Research Use only
Handling	
Format:	Liquid
Buffer:	Preservative: 0.03 % Proclin 300 Constituents: 50 % Glycerol, 0.01M PBS, PH 7.4
Preservative:	ProClin
Precaution of Use:	This product contains ProClin: a POISONOUS AND HAZARDOUS SUBSTANCE which should be handled by trained staff only.
Storage:	-20 °C,-80 °C
Storage Comment:	Upon receipt, store at -20°C or -80°C. Avoid repeated freeze.



Immunohistochemistry

Image 1. Immunohistochemistry of paraffin-embedded human bladder cancer using ABIN7164742 at dilution of 1:100



Immunohistochemistry

Image 2. Immunohistochemistry of paraffin-embedded human endometrial cancer using ABIN7164742 at dilution of 1:100