

Datasheet for ABIN7164750
anti-PRODH antibody (AA 71-134)

3 Images

[Go to Product page](#)

Overview

Quantity:	100 µg
Target:	PRODH
Binding Specificity:	AA 71-134
Reactivity:	Human
Host:	Rabbit
Clonality:	Polyclonal
Conjugate:	This PRODH antibody is un-conjugated
Application:	Western Blotting (WB), ELISA, Immunohistochemistry (IHC)

Product Details

Immunogen:	Recombinant Human Proline dehydrogenase 1, mitochondrial protein (71-134AA)
Isotype:	IgG
Cross-Reactivity:	Human, Rat
Purification:	>95%, Protein G purified

Target Details

Target:	PRODH
Alternative Name:	PRODH (PRODH Products)
Background:	Background: Converts proline to delta-1-pyrroline-5-carboxylate. Aliases: HSPOX2 antibody, mitochondrial antibody, P53 induced gene 6 protein antibody, p53-

Target Details

induced gene 6 protein antibody, PIG6 antibody, POX antibody, PROD_HUMAN antibody, PRODH 1 antibody, PRODH 2 antibody, PRODH antibody, PRODH1 antibody, PRODH2 antibody, Proline dehydrogenase antibody, proline dehydrogenase (oxidase) 1 antibody, proline dehydrogenase (proline oxidase) antibody, Proline dehydrogenase 1 antibody, Proline dehydrogenase 1, mitochondrial antibody, Proline oxidase 1 antibody, Proline oxidase 2 antibody, Proline oxidase antibody, Proline oxidase, mitochondrial antibody, Proline oxidase, mitochondrial precursor antibody, SCZD4 antibody, TP53I6 antibody, tumor protein p53 inducible protein 6 antibody

UniProt: [O43272](#)

Pathways: [Response to Water Deprivation](#), [Monocarboxylic Acid Catabolic Process](#)

Application Details

Application Notes: Recommended dilution: WB:1:500-1:5000, IHC:1:200-1:500,

Restrictions: For Research Use only

Handling

Format: Liquid

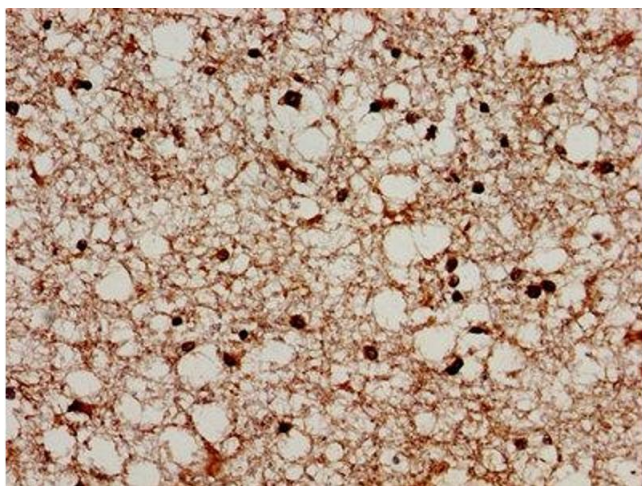
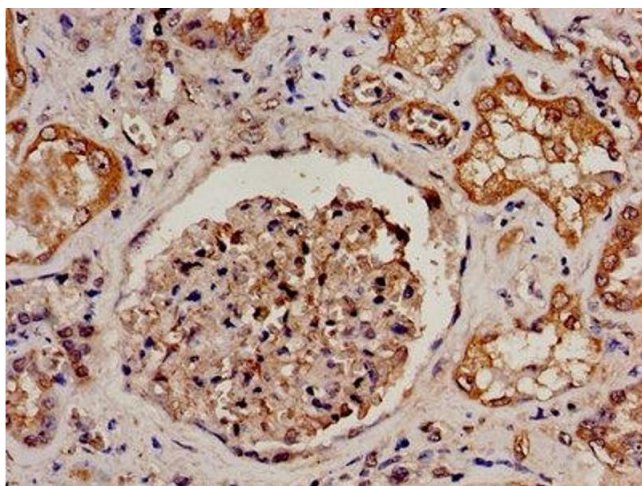
Buffer: Preservative: 0.03 % Proclin 300
Constituents: 50 % Glycerol, 0.01M PBS, pH 7.4

Preservative: ProClin

Precaution of Use: This product contains ProClin: a POISONOUS AND HAZARDOUS SUBSTANCE which should be handled by trained staff only.

Storage: -20 °C, -80 °C

Storage Comment: Upon receipt, store at -20°C or -80°C. Avoid repeated freeze.



Immunohistochemistry

Image 1. IHC image of ABIN7164750 diluted at 1:300 and staining in paraffin-embedded human kidney tissue performed on a Leica Bond™ system. After dewaxing and hydration, antigen retrieval was mediated by high pressure in a citrate buffer (pH 6.0). Section was blocked with 10 % normal goat serum 30 min at RT. Then primary antibody (1 % BSA) was incubated at 4 °C overnight. The primary is detected by a biotinylated secondary antibody and visualized using an HRP conjugated SP system.

Western Blotting

Image 2. Western Blot Positive WB detected in: Rat liver tissue All lanes: PRODH antibody at 3 µg/mL Secondary Goat polyclonal to rabbit IgG at 1/50000 dilution Predicted band size: 69, 57, 60 kDa Observed band size: 69 kDa

Immunohistochemistry

Image 3. IHC image of ABIN7164750 diluted at 1:300 and staining in paraffin-embedded human brain tissue performed on a Leica Bond™ system. After dewaxing and hydration, antigen retrieval was mediated by high pressure in a citrate buffer (pH 6.0). Section was blocked with 10 % normal goat serum 30 min at RT. Then primary antibody (1 % BSA) was incubated at 4 °C overnight. The primary is detected by a biotinylated secondary antibody and visualized using an HRP conjugated SP system.