



[Go to Product page](#)

Datasheet for ABIN7164772  
**anti-PSTPIP1 antibody (AA 157-416)**

2 Images

Overview

Quantity:	100 µL
Target:	PSTPIP1
Binding Specificity:	AA 157-416
Reactivity:	Human
Host:	Rabbit
Clonality:	Polyclonal
Conjugate:	This PSTPIP1 antibody is un-conjugated
Application:	Western Blotting (WB), ELISA, Immunohistochemistry (IHC)

Product Details

Immunogen:	Recombinant Human Proline-serine-threonine phosphatase-interacting protein 1 protein (157-416AA)
Isotype:	IgG
Cross-Reactivity:	Human, Mouse
Purification:	Antigen Affinity Purified

Target Details

Target:	PSTPIP1
Alternative Name:	PSTPIP1 ( <a href="#">PSTPIP1 Products</a> )
Background:	Background: Involved in regulation of the actin cytoskeleton. May regulate WAS actin-bundling

## Target Details

---

activity. Bridges the interaction between ABL1 and PTPN18 leading to ABL1 dephosphorylation. May play a role as a scaffold protein between PTPN12 and WAS and allow PTPN12 to dephosphorylate WAS. Has the potential to physically couple CD2 and CD2AP to WAS. Acts downstream of CD2 and CD2AP to recruit WAS to the T-cell:APC contact site so as to promote the actin polymerization required for synapse induction during T-cell activation (By similarity). Down-regulates CD2-stimulated adhesion through the coupling of PTPN12 to CD2. Also has a role in innate immunity and the inflammatory response. Recruited to inflammasomes by MEFV. Induces formation of pyroptosomes, large supramolecular structures composed of oligomerized PYCARD dimers which form prior to inflammatory apoptosis. Binding to MEFV allows MEFV to bind to PYCARD and facilitates pyroptosome formation. Regulates endocytosis and cell migration in neutrophils.

Aliases: CD2 antigen binding protein 1 antibody, CD2 binding protein 1 antibody, CD2 cytoplasmic tail binding protein antibody, CD2-binding protein 1 antibody, CD2BP1 antibody, CD2BP1L antibody, CD2BP1S antibody, H PIP antibody, H-PIP antibody, HPIP antibody, PAPAS antibody, PEST phosphatase interacting protein 1 antibody, PEST phosphatase-interacting protein 1 antibody, PPIP1\_HUMAN antibody, Proline serine threonine phosphatase interacting protein 1 antibody, Proline-serine-threonine phosphatase-interacting protein 1 antibody, PSTPIP antibody, Pstpip1 antibody

---

UniProt: [O43586](#)

## Application Details

---

Application Notes: Recommended dilution: WB:1:1000-1:5000, IHC:1:20-1:200,

Restrictions: For Research Use only

## Handling

---

Format: Liquid

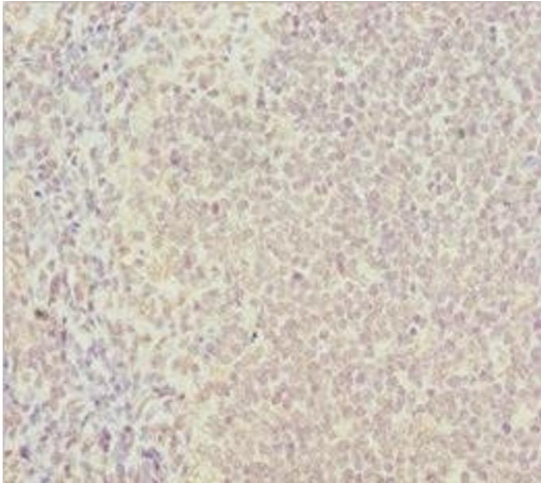
Buffer: PBS with 0.02 % sodium azide, 50 % glycerol, pH 7.3.

Preservative: Sodium azide

Precaution of Use: This product contains Sodium azide: a POISONOUS AND HAZARDOUS SUBSTANCE which should be handled by trained staff only.

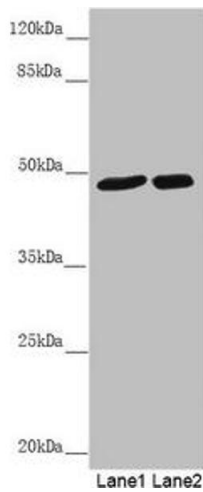
Storage: -20 °C,-80 °C

Storage Comment: Upon receipt, store at -20°C or -80°C. Avoid repeated freeze.



### Immunohistochemistry

**Image 1.** Immunohistochemistry of paraffin-embedded human tonsil tissue using ABIN7164772 at dilution of 1:100



### Western Blotting

**Image 2.** Western blot All lanes: PSTPIP1 antibody at 0.85  $\mu$ g/mL Lane 1: Mouse brain tissue Lane 2: Raw264.7 whole cell lysate Secondary Goat polyclonal to rabbit IgG at 1/10000 dilution Predicted band size: 48, 46 kDa Observed band size: 48 kDa