

Datasheet for ABIN7164792
anti-PREP antibody (AA 539-691)[Go to Product page](#)

3 Images

Overview

Quantity:	100 µL
Target:	PREP
Binding Specificity:	AA 539-691
Reactivity:	Human
Host:	Rabbit
Clonality:	Polyclonal
Conjugate:	This PREP antibody is un-conjugated
Application:	Western Blotting (WB), ELISA, Immunohistochemistry (IHC), Immunofluorescence (IF)

Product Details

Immunogen:	Recombinant Human Prolyl endopeptidase protein (539-691AA)
Isotype:	IgG
Cross-Reactivity:	Human
Purification:	Antigen Affinity Purified

Target Details

Target:	PREP
Alternative Name:	PREP (PREP Products)
Background:	Background: Cleaves peptide bonds on the C-terminal side of prolyl residues within peptides that are up to approximately 30 amino acids long.

Target Details

Aliases: dJ355L5.1 (prolyl endopeptidase) antibody, HGNC:9358 antibody, MGC16060 antibody, OTTHUMP00000040498 antibody, PE antibody, PEP antibody, Post proline cleaving enzyme antibody, Post-proline cleaving enzyme antibody, PPCE_HUMAN antibody, Prep antibody, Prolyl endopeptidase antibody, Prolyl oligopeptidase antibody

UniProt: [P48147](#)

Application Details

Application Notes: Recommended dilution: WB:1:1000-1:5000, IHC:1:20-1:200, IF:1:50-1:200,

Restrictions: For Research Use only

Handling

Format: Liquid

Buffer: Preservative: 0.03 % Proclin 300
Constituents: 50 % Glycerol, 0.01M PBS, pH 7.4

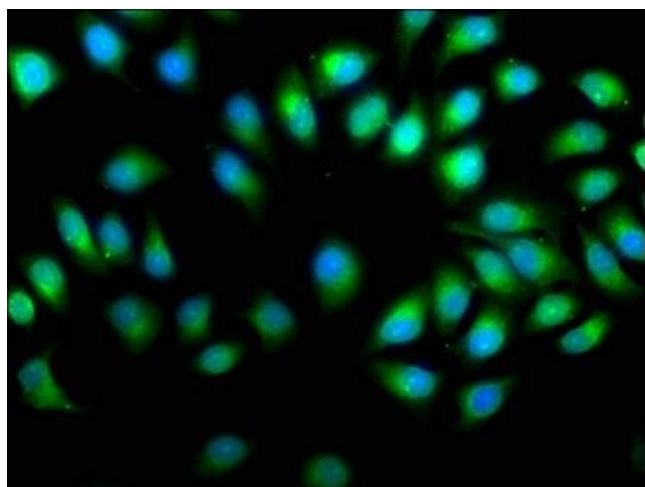
Preservative: ProClin

Precaution of Use: This product contains ProClin: a POISONOUS AND HAZARDOUS SUBSTANCE which should be handled by trained staff only.

Storage: -20 °C,-80 °C

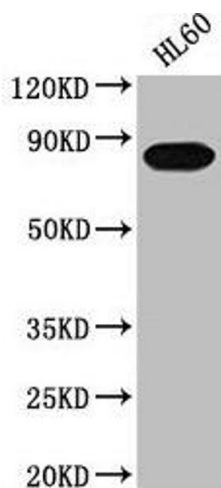
Storage Comment: Upon receipt, store at -20°C or -80°C. Avoid repeated freeze.

Images



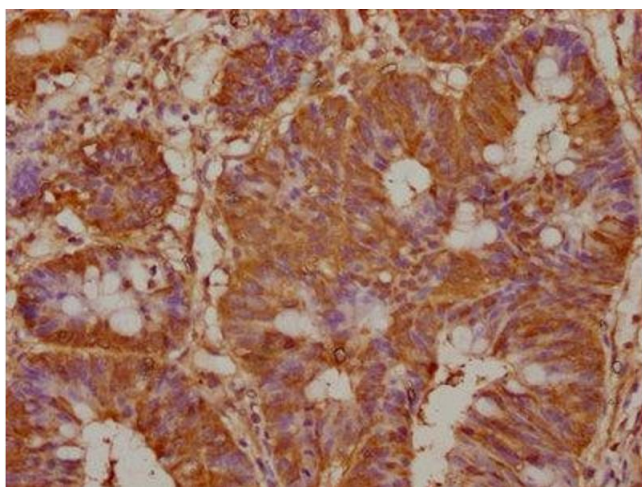
Immunofluorescence

Image 1. Immunofluorescence staining of A549 cells with ABIN7164792 at 1:50, counter-stained with DAPI. The cells were fixed in 4% formaldehyde, permeabilized using 0.2% Triton X-100 and blocked in 10% normal Goat Serum. The cells were then incubated with the antibody overnight at 4°C. The secondary antibody was Alexa Fluor 488-conjugated AffiniPure Goat Anti-Rabbit IgG(H+L).



Western Blotting

Image 2. Western Blot Positive WB detected in: HL60 whole cell lysate All lanes: PREP antibody at 1:2000 Secondary Goat polyclonal to rabbit IgG at 1/50000 dilution Predicted band size: 81 kDa Observed band size: 81 kDa



Immunohistochemistry

Image 3. IHC image of ABIN7164792 diluted at 1:100 and staining in paraffin-embedded human colon cancer performed on a Leica Bond™ system. After dewaxing and hydration, antigen retrieval was mediated by high pressure in a citrate buffer (pH 6.0). Section was blocked with 10% normal goat serum 30min at RT. Then primary antibody (1% BSA) was incubated at 4°C overnight. The primary is detected by a biotinylated secondary antibody and visualized using an HRP conjugated SP system.