

Datasheet for ABIN7164796
anti-PREPL antibody (AA 604-699)[Go to Product page](#)

1 Image

Overview

Quantity:	100 µg
Target:	PREPL
Binding Specificity:	AA 604-699
Reactivity:	Human
Host:	Rabbit
Clonality:	Polyclonal
Conjugate:	This PREPL antibody is un-conjugated
Application:	ELISA, Immunohistochemistry (IHC)

Product Details

Immunogen:	Recombinant Human Prolyl endopeptidase-like protein (604-699AA)
Isotype:	IgG
Cross-Reactivity:	Human
Purification:	>95%, Protein G purified

Target Details

Target:	PREPL
Alternative Name:	PREPL (PREPL Products)
Background:	Background: Probable serine peptidase whose precise substrate specificity remains unclear. Does not cleave peptides after a arginine or lysine residue. May play a role in the regulation of

Target Details

synaptic vesicle exocytosis (PubMed:24610330).

Aliases: PPCEL_HUMAN antibody, prepl antibody, Prolyl endopeptidase-like antibody, Prolylendopeptidase-like antibody, putative prolyl oligopeptidase antibody

UniProt: [Q4J6C6](#)

Application Details

Application Notes: Recommended dilution: IHC:1:200-1:500,

Restrictions: For Research Use only

Handling

Format: Liquid

Buffer: Preservative: 0.03 % Proclin 300
Constituents: 50 % Glycerol, 0.01M PBS, pH 7.4

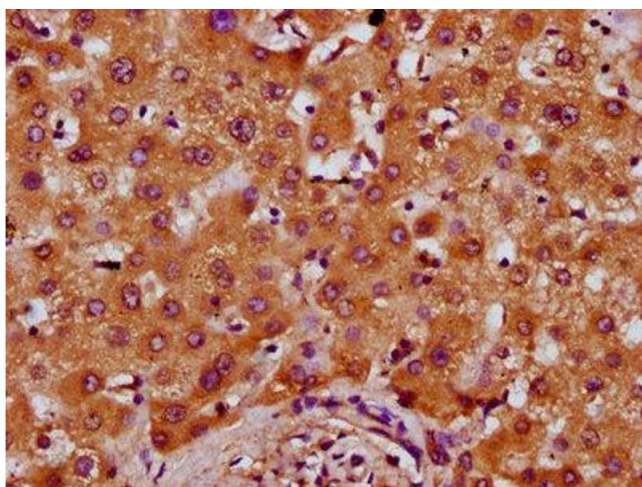
Preservative: ProClin

Precaution of Use: This product contains ProClin: a POISONOUS AND HAZARDOUS SUBSTANCE which should be handled by trained staff only.

Storage: -20 °C,-80 °C

Storage Comment: Upon receipt, store at -20°C or -80°C. Avoid repeated freeze.

Images



Immunohistochemistry

Image 1. IHC image of ABIN7164796 diluted at 1:400 and staining in paraffin-embedded human liver tissue performed on a Leica Bond™ system. After dewaxing and hydration, antigen retrieval was mediated by high pressure in a citrate buffer (pH 6.0). Section was blocked with 10% normal goat serum 30min at RT. Then primary antibody (1% BSA) was incubated at 4°C overnight. The primary is detected by a biotinylated secondary antibody and visualized using an HRP conjugated SP system.