



[Go to Product page](#)

Datasheet for ABIN7164816  
**anti-PCCB antibody (AA 200-314)**

3 Images

Overview

Quantity:	100 µg
Target:	PCCB
Binding Specificity:	AA 200-314
Reactivity:	Human
Host:	Rabbit
Clonality:	Polyclonal
Conjugate:	This PCCB antibody is un-conjugated
Application:	Western Blotting (WB), ELISA, Immunohistochemistry (IHC)

Product Details

Immunogen:	Recombinant Human Propionyl-CoA carboxylase beta chain, mitochondrial protein (200-314AA)
Isotype:	IgG
Cross-Reactivity:	Human
Purification:	>95%, Protein G purified

Target Details

Target:	PCCB
Alternative Name:	PCCB ( <a href="#">PCCB Products</a> )
Background:	Background: cytosol, mitochondrial matrix, mitochondrion, CoA carboxylase activity, propionyl-CoA carboxylase activity, biotin metabolic process, fatty acid catabolic process, short-chain

## Target Details

---

fatty acid catabolic process

Aliases: DKFZp451E113 antibody, PCCase subunit beta antibody, pccB antibody, PCCB\_HUMAN antibody, pccBC Complementation group antibody, Propanoyl CoA:carbon dioxide ligase subunit beta antibody, Propanoyl-CoA:carbon dioxide ligase subunit beta antibody, Propionyl CoA carboxylase beta chain, mitochondrial antibody, propionyl Coenzyme A carboxylase, beta polypeptide antibody, Propionyl-CoA carboxylase , beta subunit antibody, Propionyl-CoA carboxylase beta chain, mitochondrial antibody, R74805 antibody

---

UniProt: [P05166](#)

---

Pathways: [Monocarboxylic Acid Catabolic Process](#)

## Application Details

---

Application Notes: Recommended dilution: WB:1:500-1:5000, IHC:1:200-1:500,

---

Restrictions: For Research Use only

## Handling

---

Format: Liquid

---

Buffer: Preservative: 0.03 % Proclin 300  
Constituents: 50 % Glycerol, 0.01M PBS, pH 7.4

---

Preservative: ProClin

---

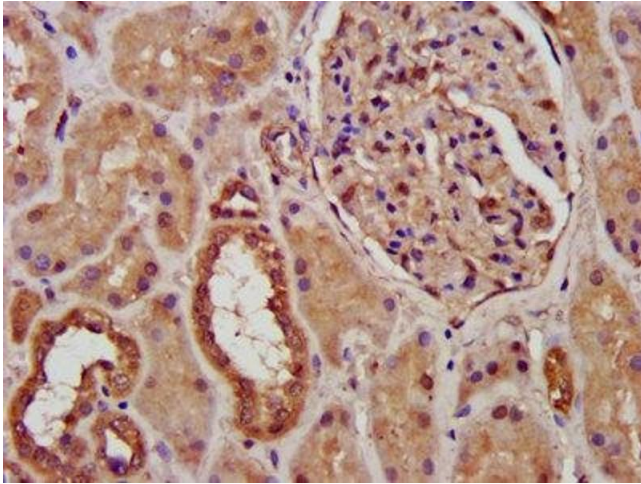
Precaution of Use: This product contains ProClin: a POISONOUS AND HAZARDOUS SUBSTANCE which should be handled by trained staff only.

---

Storage: -20 °C,-80 °C

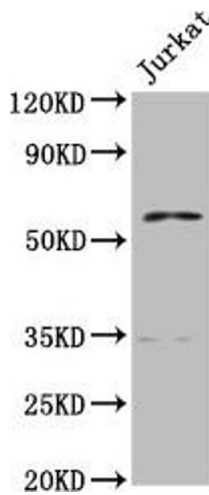
---

Storage Comment: Upon receipt, store at -20°C or -80°C. Avoid repeated freeze.



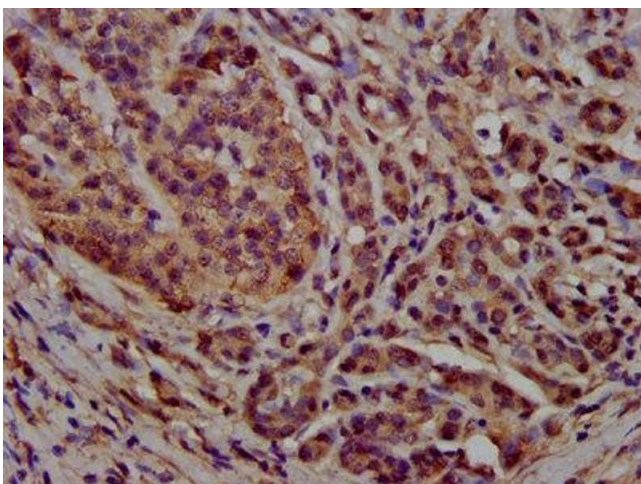
### Immunohistochemistry

**Image 1.** IHC image of ABIN7164816 diluted at 1:300 and staining in paraffin-embedded human kidney tissue performed on a Leica Bond™ system. After dewaxing and hydration, antigen retrieval was mediated by high pressure in a citrate buffer (pH 6.0). Section was blocked with 10% normal goat serum 30min at RT. Then primary antibody (1% BSA) was incubated at 4°C overnight. The primary is detected by a biotinylated secondary antibody and visualized using an HRP conjugated SP system.



### Western Blotting

**Image 2.** Western Blot Positive WB detected in: Jurkat whole cell lysate All lanes: PCCB antibody at 7.7 µg/mL Secondary Goat polyclonal to rabbit IgG at 1/50000 dilution Predicted band size: 59, 61 kDa Observed band size: 59 kDa



### Immunohistochemistry

**Image 3.** IHC image of ABIN7164816 diluted at 1:300 and staining in paraffin-embedded human pancreatic cancer performed on a Leica Bond™ system. After dewaxing and hydration, antigen retrieval was mediated by high pressure in a citrate buffer (pH 6.0). Section was blocked with 10% normal goat serum 30min at RT. Then primary antibody (1% BSA) was incubated at 4°C overnight. The primary is detected by a biotinylated secondary antibody and visualized using an HRP conjugated SP system.