



[Go to Product page](#)

Datasheet for ABIN7164824
anti-PCSK6 antibody (AA 596-710)

2 Images

Overview

Quantity:	100 µg
Target:	PCSK6
Binding Specificity:	AA 596-710
Reactivity:	Human
Host:	Rabbit
Clonality:	Polyclonal
Conjugate:	This PCSK6 antibody is un-conjugated
Application:	ELISA, Immunohistochemistry (IHC)

Product Details

Immunogen:	Recombinant Human Proprotein convertase subtilisin/kexin type 6 protein (596-710AA)
Isotype:	IgG
Cross-Reactivity:	Human
Purification:	>95%, Protein G purified

Target Details

Target:	PCSK6
Alternative Name:	PCSK6 (PCSK6 Products)
Background:	Background: Serine endoprotease that processes various proproteins by cleavage at paired basic amino acids, recognizing the RXXX[KR]R consensus motif. Likely functions in the

Target Details

constitutive secretory pathway, with unique restricted distribution in both neuroendocrine and non-neuroendocrine tissues.

Aliases: Paired basic amino acid cleaving enzyme 4 antibody, Paired basic amino acid cleaving system 4 antibody, PCSK6 antibody, PCSK6_HUMAN antibody, Proprotein convertase subtilisin/kexin type 6 antibody, SPC4 antibody, Subtilisin like protease antibody, Subtilisin-like proprotein convertase 4 antibody, subtilisin/kexin like protease PACE4 antibody, Subtilisin/kexin-like protease PACE4 antibody

UniProt: [P29122](#)

Pathways: [Neurotrophin Signaling Pathway](#), [SARS-CoV-2 Protein Interactome](#)

Application Details

Application Notes: Recommended dilution: IHC:1:200-1:500,

Restrictions: For Research Use only

Handling

Format: Liquid

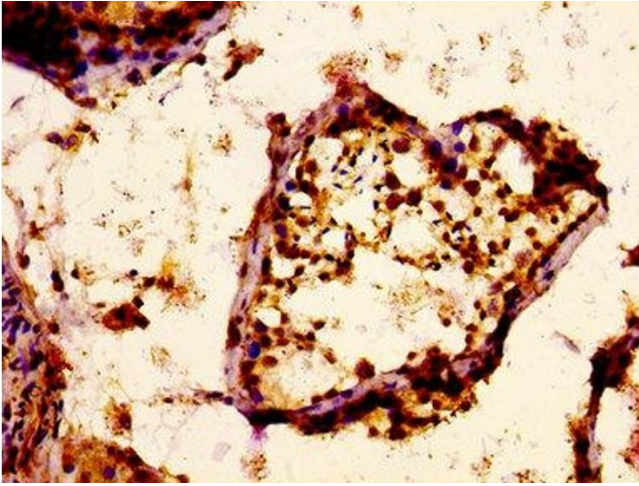
Buffer: Preservative: 0.03 % Proclin 300
Constituents: 50 % Glycerol, 0.01M PBS, pH 7.4

Preservative: ProClin

Precaution of Use: This product contains ProClin: a POISONOUS AND HAZARDOUS SUBSTANCE which should be handled by trained staff only.

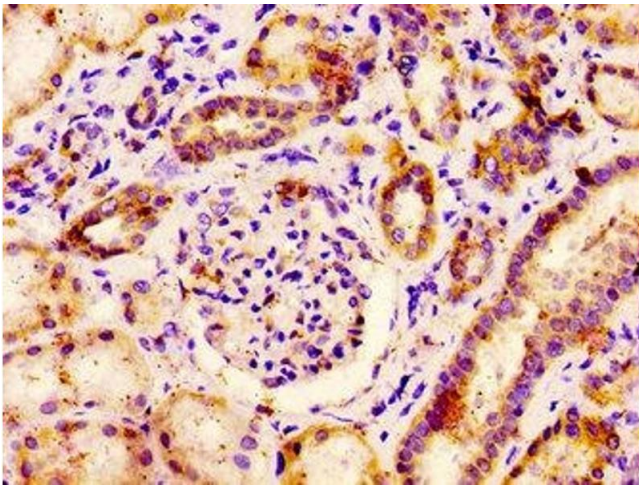
Storage: -20 °C,-80 °C

Storage Comment: Upon receipt, store at -20°C or -80°C. Avoid repeated freeze.



Immunohistochemistry

Image 1. IHC image of ABIN7164824 diluted at 1:400 and staining in paraffin-embedded human testis tissue performed on a Leica Bond™ system. After dewaxing and hydration, antigen retrieval was mediated by high pressure in a citrate buffer (pH 6.0). Section was blocked with 10% normal goat serum 30min at RT. Then primary antibody (1% BSA) was incubated at 4°C overnight. The primary is detected by a biotinylated secondary antibody and visualized using an HRP conjugated ABC system.



Immunohistochemistry

Image 2. IHC image of ABIN7164824 diluted at 1:400 and staining in paraffin-embedded human kidney tissue performed on a Leica Bond™ system. After dewaxing and hydration, antigen retrieval was mediated by high pressure in a citrate buffer (pH 6.0). Section was blocked with 10% normal goat serum 30min at RT. Then primary antibody (1% BSA) was incubated at 4°C overnight. The primary is detected by a biotinylated secondary antibody and visualized using an HRP conjugated SP system.