



[Go to Product page](#)

Datasheet for ABIN7164866
anti-PTGR1 antibody (AA 202-282)

2 Images

Overview

Quantity:	100 µg
Target:	PTGR1
Binding Specificity:	AA 202-282
Reactivity:	Human
Host:	Rabbit
Clonality:	Polyclonal
Conjugate:	This PTGR1 antibody is un-conjugated
Application:	ELISA, Immunohistochemistry (IHC), Immunofluorescence (IF)

Product Details

Immunogen:	Recombinant Human Prostaglandin reductase 1 protein (202-282AA)
Isotype:	IgG
Cross-Reactivity:	Human
Purification:	>95%, Protein G purified

Target Details

Target:	PTGR1
Alternative Name:	PTGR1 (PTGR1 Products)
Background:	Background: Functions as 15-oxo-prostaglandin 13-reductase and acts on 15-oxo-PGE1, 15-oxo-PGE2 and 15-oxo-PGE2-alpha. Has no activity towards PGE1, PGE2 and PGE2-alpha (By

Target Details

similarity). Catalyzes the conversion of leukotriene B4 into its biologically less active metabolite, 12-oxo-leukotriene B4. This is an initial and key step of metabolic inactivation of leukotriene B4. Aliases: 15-oxoprostaglandin 13-reductase antibody, FLJ99229 antibody, leukotriene B4 12-hydroxydehydrogenase antibody, LTB4DH antibody, MGC34943 antibody, NADP-dependent leukotriene B4 12-hydroxydehydrogenase antibody, PGR1 antibody, PRG-1 antibody, Prostaglandin reductase 1 antibody, Ptgr1 antibody, PTGR1_HUMAN antibody, RP11-16L21.1 antibody, ZADH3 antibody, zinc binding alcohol dehydrogenase domain containing 3 antibody

UniProt: [Q14914](#)

Application Details

Application Notes: Recommended dilution: IHC:1:20-1:200, IF:1:50-1:200,

Restrictions: For Research Use only

Handling

Format: Liquid

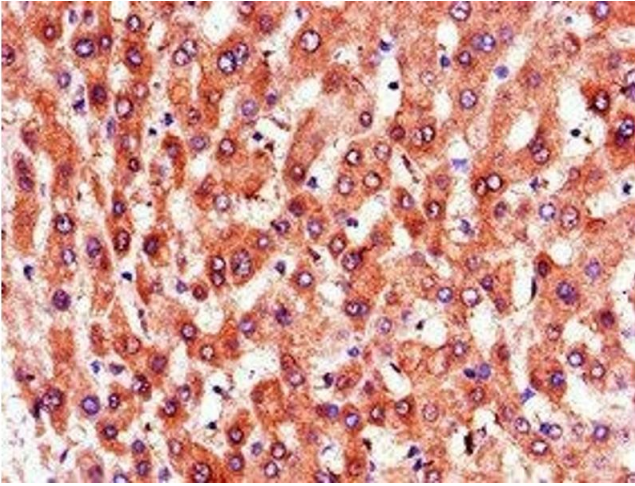
Buffer: Preservative: 0.03 % Proclin 300
Constituents: 50 % Glycerol, 0.01M PBS, PH 7.4

Preservative: ProClin

Precaution of Use: This product contains ProClin: a POISONOUS AND HAZARDOUS SUBSTANCE which should be handled by trained staff only.

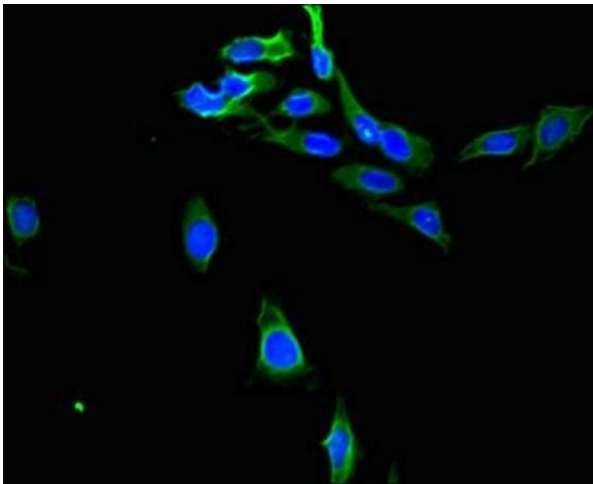
Storage: -20 °C,-80 °C

Storage Comment: Upon receipt, store at -20°C or -80°C. Avoid repeated freeze.



Immunohistochemistry

Image 1. Immunohistochemistry of paraffin-embedded human liver tissue using ABIN7164866 at dilution of 1:100



Immunofluorescence

Image 2. Immunofluorescent analysis of HeLa cells using ABIN7164866 at dilution of 1:100 and Alexa Fluor 488-conjugated AffiniPure Goat Anti-Rabbit IgG(H+L)