

Datasheet for ABIN7164874
anti-PTGDS antibody (AA 23-190)[Go to Product page](#)

2 Images

Overview

Quantity:	100 µg
Target:	PTGDS
Binding Specificity:	AA 23-190
Reactivity:	Human
Host:	Rabbit
Clonality:	Polyclonal
Conjugate:	This PTGDS antibody is un-conjugated
Application:	Immunohistochemistry (IHC), ELISA, Immunofluorescence (IF)

Product Details

Immunogen:	Recombinant Human Prostaglandin-H2 D-isomerase protein (23-190AA)
Isotype:	IgG
Cross-Reactivity:	Human
Purification:	>95%, Protein G purified

Target Details

Target:	PTGDS
Alternative Name:	PTGDS (PTGDS Products)
Background:	Background: Catalyzes the conversion of PGH2 to PGD2, a prostaglandin involved in smooth muscle contraction/relaxation and a potent inhibitor of platelet aggregation. Involved in a

Target Details

variety of CNS functions, such as sedation, NREM sleep and PGE2-induced allodynia, and may have an anti-apoptotic role in oligodendrocytes. Binds small non-substrate lipophilic molecules, including biliverdin, bilirubin, retinal, retinoic acid and thyroid hormone, and may act as a scavenger for harmful hydrophobic molecules and as a secretory retinoid and thyroid hormone transporter. Possibly involved in development and maintenance of the blood-brain, blood-retina, blood-aqueous humor and blood-testis barrier. It is likely to play important roles in both maturation and maintenance of the central nervous system and male reproductive system.

Aliases: Beta trace protein antibody, Beta-trace protein antibody, Cerebrin 28 antibody, Cerebrin-28 antibody, glutathione independent PGD synthase antibody, Glutathione independent PGD synthetase antibody, Glutathione-independent PGD synthase antibody, L PGDS antibody, Lipocalin type prostaglandin D synthase antibody, Lipocalin-type prostaglandin-D synthase antibody, LPGDS antibody, PDS antibody, PGD2 antibody, PGD2 synthase antibody, PGDS antibody, PGDS2 antibody, prostaglandin D synthase antibody, prostaglandin D2 synthase (21 kDa, brain) antibody, prostaglandin D2 synthase (brain) antibody, prostaglandin D2 synthase 21 kDa (brain) antibody, Prostaglandin D2 synthase antibody, prostaglandin H2 D isomerase antibody, Prostaglandin-D2 synthase antibody, Prostaglandin-H2 D-isomerase antibody, PTGDS antibody, PTGDS_HUMAN antibody, RP23-47P18.11-006 antibody

UniProt: [P41222](#)

Application Details

Application Notes: Recommended dilution: IHC:1:20-1:200, IF:1:50-1:200,

Restrictions: For Research Use only

Handling

Format: Liquid

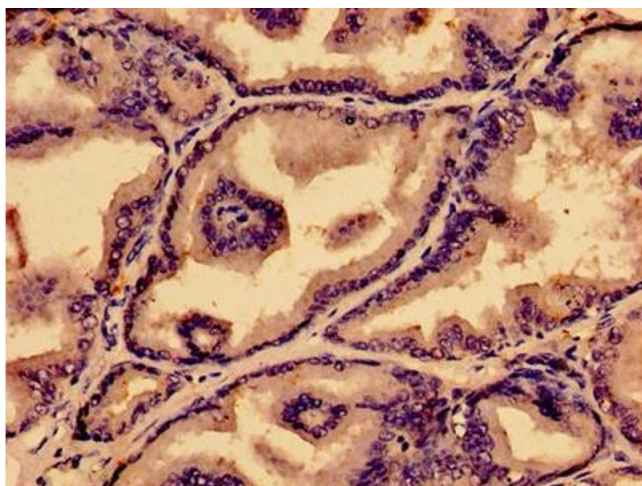
Buffer: Preservative: 0.03 % Proclin 300
Constituents: 50 % Glycerol, 0.01M PBS, PH 7.4

Preservative: ProClin

Precaution of Use: This product contains ProClin: a POISONOUS AND HAZARDOUS SUBSTANCE which should be handled by trained staff only.

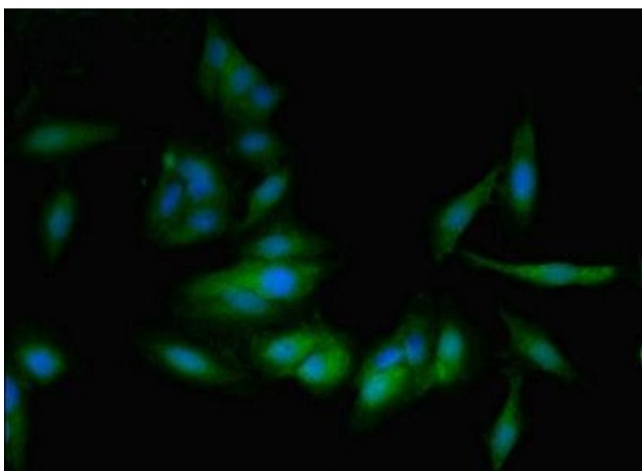
Storage: -20 °C,-80 °C

Storage Comment: Upon receipt, store at -20°C or -80°C. Avoid repeated freeze.



Immunohistochemistry

Image 1. Immunohistochemistry of paraffin-embedded human prostate tissue using ABIN7164874 at dilution of 1:100



Immunofluorescence

Image 2. Immunofluorescent analysis of HeLa cells using ABIN7164874 at dilution of 1:100 and Alexa Fluor 488-conjugated AffiniPure Goat Anti-Rabbit IgG(H+L)