

Datasheet for ABIN7164919  
**anti-PSME3 antibody (AA 2-252)**[Go to Product page](#)

## 4 Images

## Overview

Quantity:	100 µg
Target:	PSME3
Binding Specificity:	AA 2-252
Reactivity:	Human
Host:	Rabbit
Clonality:	Polyclonal
Conjugate:	This PSME3 antibody is un-conjugated
Application:	Immunohistochemistry (IHC), ELISA, Immunofluorescence (IF)

## Product Details

Immunogen:	Recombinant Human Proteasome activator complex subunit 3 protein (2-252AA)
Isotype:	IgG
Cross-Reactivity:	Human
Purification:	>95%, Protein G purified

## Target Details

Target:	PSME3
Alternative Name:	PSME3 ( <a href="#">PSME3 Products</a> )
Background:	Background: Subunit of the 11S REG-gamma (also called PA28-gamma) proteasome regulator, a doughnut-shaped homoheptamer which associates with the proteasome. 11S REG-gamma

## Target Details

activates the trypsin-like catalytic subunit of the proteasome but inhibits the chymotrypsin-like and postglutamyl-preferring (PGPH) subunits. Facilitates the MDM2-p53/TP53 interaction which promotes ubiquitination- and MDM2-dependent proteasomal degradation of p53/TP53, limiting its accumulation and resulting in inhibited apoptosis after DNA damage. May also be involved in cell cycle regulation.

Aliases: 11S regulator complex gamma subunit antibody, 11S regulator complex subunit gamma antibody, Activator of multicatalytic protease subunit 3 antibody, Ki antibody, Ki antigen antibody, Ki nuclear autoantigen antibody, Ki, PA28 gamma antibody, PA28 gamma antibody, PA28g antibody, PA28gamma antibody, Proteasome (prosome, macropain) activator subunit 3 (PA28 gamma, Ki) antibody, Proteasome (prosome, macropain) activator subunit 3 antibody, Proteasome activator 28 gamma antibody, Proteasome activator 28 subunit gamma antibody, Proteasome activator complex subunit 3 antibody, Proteasome activator subunit 3 antibody, PSME3 antibody, PSME3\_HUMAN antibody, REG GAMMA antibody, REG-gamma antibody

UniProt: [P61289](#)

Pathways: [Mitotic G1-G1/S Phases](#), [DNA Replication](#), [Positive Regulation of Endopeptidase Activity](#), [Hepatitis C](#), [Synthesis of DNA](#)

## Application Details

Application Notes: Recommended dilution: IHC:1:20-1:200, IF:1:50-1:200,

Restrictions: For Research Use only

## Handling

Format: Liquid

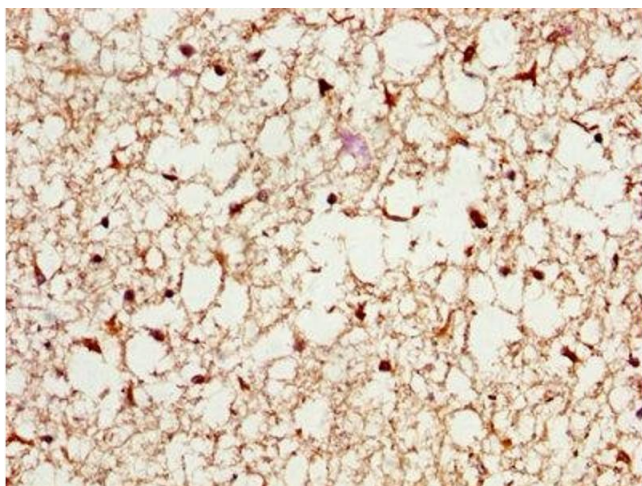
Buffer: Preservative: 0.03 % Proclin 300  
Constituents: 50 % Glycerol, 0.01M PBS, PH 7.4

Preservative: ProClin

Precaution of Use: This product contains ProClin: a POISONOUS AND HAZARDOUS SUBSTANCE which should be handled by trained staff only.

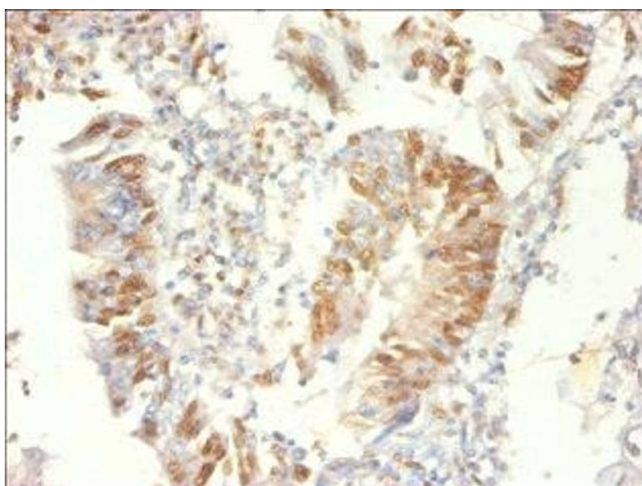
Storage: -20 °C,-80 °C

Storage Comment: Upon receipt, store at -20°C or -80°C. Avoid repeated freeze.



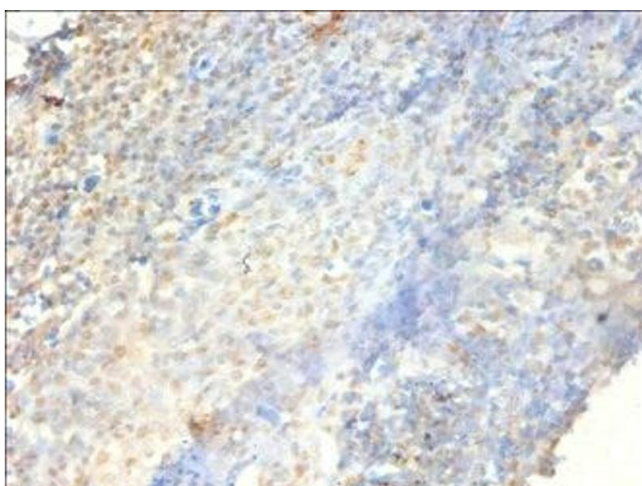
#### Immunohistochemistry

**Image 1.** IHC image of ABIN7164919 diluted at 1:200 and staining in paraffin-embedded human brain tissue performed on a Leica Bond™ system. After dewaxing and hydration, antigen retrieval was mediated by high pressure in a citrate buffer (pH 6.0). Section was blocked with 10% normal goat serum 30min at RT. Then primary antibody (1% BSA) was incubated at 4°C overnight. The primary is detected by a biotinylated secondary antibody and visualized using an HRP conjugated SP system.



#### Immunohistochemistry

**Image 2.** Immunohistochemistry of paraffin-embedded human colon cancer using ABIN7164919 at dilution of 1:100



#### Immunohistochemistry

**Image 3.** Immunohistochemistry of paraffin-embedded human tonsil tissue using ABIN7164919 at dilution of 1:100

Please check the [product details page](#) for more images. Overall 4 images are available for ABIN7164919.