

Datasheet for ABIN7164944
anti-PSMA1 antibody (AA 163-263)

5 Images

[Go to Product page](#)

Overview

Quantity:	100 µg
Target:	PSMA1
Binding Specificity:	AA 163-263
Reactivity:	Human
Host:	Rabbit
Clonality:	Polyclonal
Conjugate:	This PSMA1 antibody is un-conjugated
Application:	Western Blotting (WB), ELISA, Immunohistochemistry (IHC), Immunofluorescence (IF), Immunoprecipitation (IP)

Product Details

Immunogen:	Recombinant Human Proteasome subunit alpha type-1 protein (163-263AA)
Isotype:	IgG
Cross-Reactivity:	Human
Purification:	>95%, Protein G purified

Target Details

Target:	PSMA1
Alternative Name:	PSMA1 (PSMA1 Products)
Background:	Background: The proteasome is a multicatalytic proteinase complex which is characterized by

Target Details

its ability to cleave peptides with Arg, Phe, Tyr, Leu, and Glu adjacent to the leaving group at neutral or slightly basic pH . The proteasome has an ATP-dependent proteolytic activity. Mediates the lipopolysaccharide-induced signal transduction in the macrophage proteasome (By similarity). Might be involved in the anti-inflammatory response of macrophages during the interaction with C.albicans heat-inactivated cells (By similarity).

Aliases: 30 kDa prosomal protein antibody, HC 2 antibody, HC2 antibody, Macropain subunit C2 antibody, Macropain subunit nu antibody, MGC14542 antibody, MGC14575 antibody, MGC14751 antibody, MGC1667 antibody, MGC21459 antibody, MGC22853 antibody, MGC23915 antibody, Multicatalytic endopeptidase complex subunit C2 antibody, NU antibody, PROS 30 antibody, PROS-30 antibody, PROS30 antibody, Proteasome (prosome macropain) subunit alpha type 1 antibody, Proteasome alpha 1 subunit antibody, Proteasome component C2 antibody, Proteasome nu chain antibody, Proteasome subunit alpha type 1 antibody, Proteasome subunit alpha type I antibody, Proteasome subunit alpha type-1 antibody, Proteasome subunit nu antibody, Protein P30 33K antibody, PSA1_HUMAN antibody, PSC 2 antibody, PSC2 antibody, PSMA 1 antibody, psmA1 antibody

UniProt: [P25786](#)

Pathways: [Mitotic G1-G1/S Phases](#), [DNA Replication](#), [Synthesis of DNA](#)

Application Details

Application Notes: Recommended dilution: WB:1:500-1:5000, IHC:1:20-1:200, IF:1:50-1:200, IP:1:200-1:2000,

Restrictions: For Research Use only

Handling

Format: Liquid

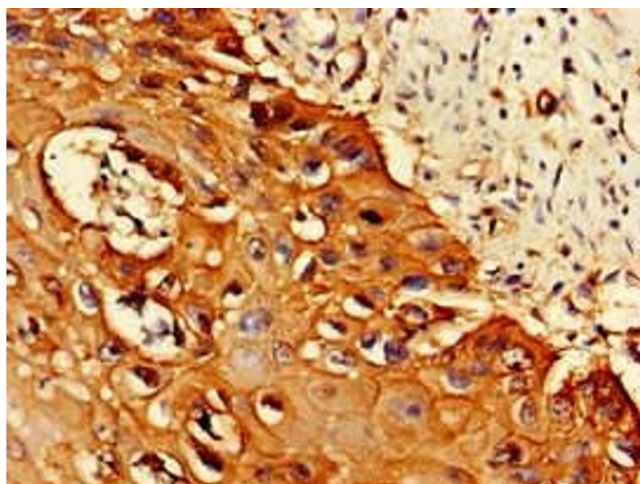
Buffer: Preservative: 0.03 % Proclin 300
Constituents: 50 % Glycerol, 0.01M PBS, pH 7.4

Preservative: ProClin

Precaution of Use: This product contains ProClin: a POISONOUS AND HAZARDOUS SUBSTANCE which should be handled by trained staff only.

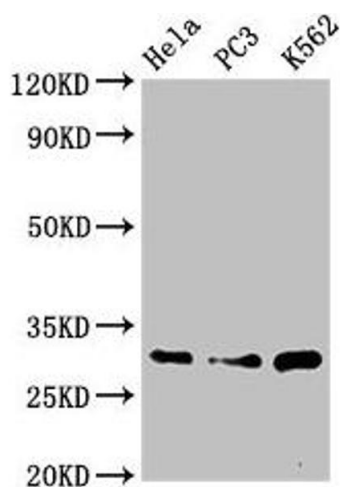
Storage: -20 °C,-80 °C

Storage Comment: Upon receipt, store at -20°C or -80°C. Avoid repeated freeze.



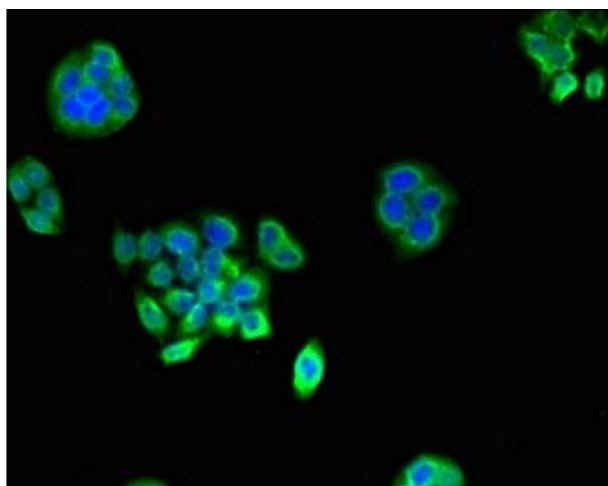
Immunohistochemistry

Image 1. Immunohistochemistry of paraffin-embedded human cervical cancer using ABIN7164944 at dilution of 1:100



Western Blotting

Image 2. Western Blot Positive WB detected in: HeLa whole cell lysate, PC-3 whole cell lysate, K562 whole cell lysate All lanes: PSMA1 antibody at 3.4 µg/mL Secondary Goat polyclonal to rabbit IgG at 1/50000 dilution Predicted band size: 30, 31 kDa Observed band size: 30 kDa



Immunofluorescence

Image 3. Immunofluorescent analysis of PC-3 cells using ABIN7164944 at dilution of 1:100 and Alexa Fluor 488-conjugated AffiniPure Goat Anti-Rabbit IgG(H+L)

Please check the [product details page](#) for more images. Overall 5 images are available for ABIN7164944.