

Datasheet for ABIN7164948  
**anti-PSMA2 antibody (AA 120-227)**[Go to Product page](#)

## 2 Images

## Overview

Quantity:	100 µg
Target:	PSMA2
Binding Specificity:	AA 120-227
Reactivity:	Human
Host:	Rabbit
Clonality:	Polyclonal
Conjugate:	This PSMA2 antibody is un-conjugated
Application:	Immunohistochemistry (IHC), Immunofluorescence (IF), ELISA

## Product Details

Immunogen:	Recombinant Human Proteasome subunit alpha type-2 protein (120-227AA)
Isotype:	IgG
Cross-Reactivity:	Human
Purification:	>95%, Protein G purified

## Target Details

Target:	PSMA2
Alternative Name:	PSMA2 ( <a href="#">PSMA2 Products</a> )
Background:	Background: The proteasome is a multicatalytic proteinase complex which is characterized by its ability to cleave peptides with Arg, Phe, Tyr, Leu, and Glu adjacent to the leaving group at

## Target Details

neutral or slightly basic pH . The proteasome has an ATP-dependent proteolytic activity. PSMA2 may have a potential regulatory effect on another component(s) of the proteasome complex through tyrosine phosphorylation.

Aliases: HC3 antibody, Macropain subunit C3 antibody, MU antibody, Multicatalytic endopeptidase complex subunit C3 antibody, PMSA2 antibody, Proteasome (prosome macropain) subunit alpha type 2 antibody, Proteasome alpha 2 subunit antibody, Proteasome component C3 antibody, Proteasome subunit alpha type 2 antibody, Proteasome subunit alpha type-2 antibody, Proteasome subunit HC3 antibody, PSA2\_HUMAN antibody, PSC2 antibody, PSC3 antibody, PSMA 2 antibody, psmA2 antibody

UniProt: [P25787](#)

Pathways: [Mitotic G1-G1/S Phases](#), [DNA Replication](#), [Synthesis of DNA](#)

## Application Details

Application Notes: Recommended dilution: IHC:1:20-1:200, IF:1:50-1:200,

Restrictions: For Research Use only

## Handling

Format: Liquid

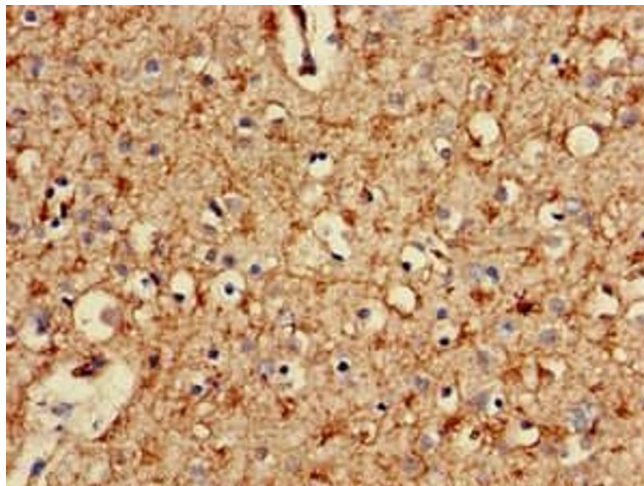
Buffer: Preservative: 0.03 % Proclin 300  
Constituents: 50 % Glycerol, 0.01M PBS, pH 7.4

Preservative: ProClin

Precaution of Use: This product contains ProClin: a POISONOUS AND HAZARDOUS SUBSTANCE which should be handled by trained staff only.

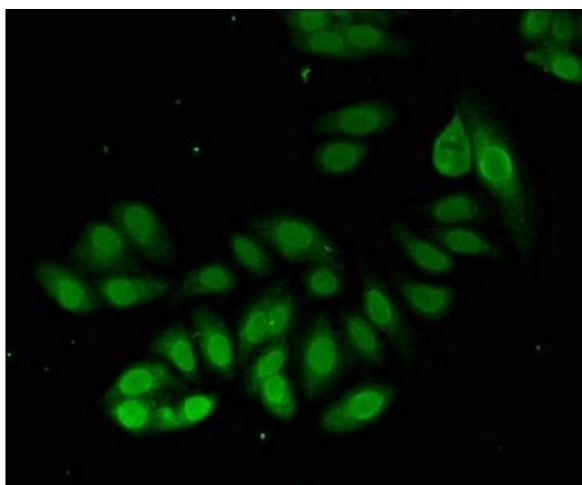
Storage: -20 °C,-80 °C

Storage Comment: Upon receipt, store at -20°C or -80°C. Avoid repeated freeze.



#### Immunohistochemistry

**Image 1.** Immunohistochemistry of paraffin-embedded human brain tissue using ABIN7164948 at dilution of 1:100



#### Immunofluorescence

**Image 2.** Immunofluorescent analysis of HepG2 cells using ABIN7164948 at dilution of 1:100 and Alexa Fluor 488-conjugated AffiniPure Goat Anti-Rabbit IgG(H+L)