

Datasheet for ABIN7164968
anti-PSMB1 antibody (AA 29-241)[Go to Product page](#)

1 Image

Overview

Quantity:	100 µg
Target:	PSMB1
Binding Specificity:	AA 29-241
Reactivity:	Human
Host:	Rabbit
Clonality:	Polyclonal
Conjugate:	This PSMB1 antibody is un-conjugated
Application:	Western Blotting (WB), ELISA

Product Details

Immunogen:	Recombinant Human Proteasome subunit beta type-1 protein (29-241AA)
Isotype:	IgG
Cross-Reactivity:	Human
Purification:	>95%, Protein G purified

Target Details

Target:	PSMB1
Alternative Name:	PSMB1 (PSMB1 Products)
Background:	Background: The proteasome is a multicatalytic proteinase complex which is characterized by its ability to cleave peptides with Arg, Phe, Tyr, Leu, and Glu adjacent to the leaving group at

Target Details

neutral or slightly basic pH . The proteasome has an ATP-dependent proteolytic activity.Cleavage of peptide bonds with very broad specificity.The 26S proteasome consists of a 20S proteasome core and two 19S regulatory subunits. The 20S proteasome core is composed of 28 subunits that are arranged in four stacked rings, resulting in a barrel-shaped structure. The two end rings are each formed by seven alpha subunits, and the two central rings are each formed by seven beta subunits. The catalytic chamber with the active sites is on the inside of the barrel. Interacts with SERPINB2. Interacts with HIV-1 TAT protein.

Aliases: FLJ25321 antibody, HC5 antibody, KIAA1838 antibody, Macropain subunit C5 antibody, Multicatalytic endopeptidase complex subunit C5 antibody, Proteasome (prosome macropain) subunit beta type 1 antibody, Proteasome beta 1 subunit antibody, Proteasome component C5 antibody, Proteasome gamma chain antibody, Proteasome subunit beta type 1 antibody, Proteasome subunit beta type-1 antibody, Proteasome subunit HC5 antibody, PSB1_HUMAN antibody, PSC5 antibody, PSMB 1 antibody, PSMB1 antibody

UniProt: [P20618](#)

Pathways: [Mitotic G1-G1/S Phases](#), [DNA Replication](#), [Synthesis of DNA](#)

Application Details

Application Notes: Recommended dilution: WB:1:1000-1:5000,

Restrictions: For Research Use only

Handling

Format: Liquid

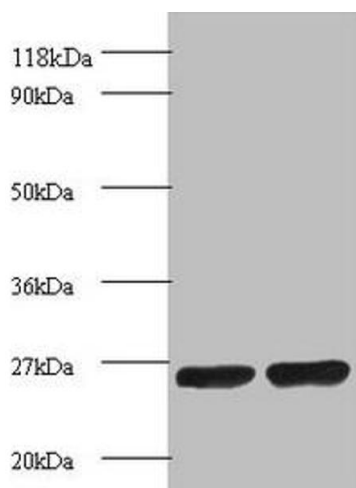
Buffer: Preservative: 0.03 % Proclin 300
Constituents: 50 % Glycerol, 0.01M PBS, PH 7.4

Preservative: ProClin

Precaution of Use: This product contains ProClin: a POISONOUS AND HAZARDOUS SUBSTANCE which should be handled by trained staff only.

Storage: -20 °C,-80 °C

Storage Comment: Upon receipt, store at -20°C or -80°C. Avoid repeated freeze.



Western Blotting

Image 1. Western blot All lanes: Proteasome subunit beta 1 antibody at 2 µg/mL Lane 1: EC109 whole cell lysate Lane 2: 293T whole cell lysate Secondary Goat polyclonal to rabbit IgG at 1/15000 dilution Predicted band size: 27 kDa Observed band size: 27 kDa