

Datasheet for ABIN7164982
anti-PSMB5 antibody (AA 106-188)[Go to Product page](#)

4 Images

Overview

Quantity:	100 µg
Target:	PSMB5
Binding Specificity:	AA 106-188
Reactivity:	Human
Host:	Rabbit
Clonality:	Polyclonal
Conjugate:	This PSMB5 antibody is un-conjugated
Application:	Western Blotting (WB), Immunohistochemistry (IHC), ELISA, Immunofluorescence (IF)

Product Details

Immunogen:	Recombinant Human Proteasome subunit beta type-5 protein (106-188AA)
Isotype:	IgG
Cross-Reactivity:	Human, Mouse
Purification:	>95%, Protein G purified

Target Details

Target:	PSMB5
Alternative Name:	PSMB5 (PSMB5 Products)
Background:	Background: The proteasome is a multicatalytic proteinase complex which is characterized by its ability to cleave peptides with Arg, Phe, Tyr, Leu, and Glu adjacent to the leaving group at

Target Details

neutral or slightly basic pH . The proteasome has an ATP-dependent proteolytic activity. This unit is responsible of the chymotrypsin-like activity of the proteasome and is one of the principal target of the proteasome inhibitor bortezomib. May catalyze basal processing of intracellular antigens. Plays a role in the protection against oxidative damage through the Nrf2-ARE pathway (By similarity).

Aliases: DKFZp459C139 antibody, EC 3.4.25.1 antibody, LMPX antibody, Macropain epsilon chain antibody, MB1 antibody, MGC104214 antibody, MGC118075 antibody, MGC134464 antibody, Multicatalytic endopeptidase complex epsilon chain antibody, Proteasome (prosome, macropain) subunit, beta type, 5 antibody, Proteasome beta 5 subunit antibody, Proteasome catalytic subunit 3 antibody, Proteasome chain 6 antibody, Proteasome epsilon chain antibody, Proteasome subunit beta type-5 antibody, Proteasome subunit MB1 antibody, Proteasome subunit X antibody, Proteasome subunit, beta type, 5 antibody, Proteasome subunit, beta-5 antibody, PSB5_HUMAN antibody, PSMB5 antibody, PSX large multifunctional protease X antibody, X antibody

UniProt: [P28074](#)

Pathways: [Mitotic G1-G1/S Phases](#), [DNA Replication](#), [Synthesis of DNA](#)

Application Details

Application Notes: Recommended dilution: WB:1:500-1:5000, IHC:1:20-1:200, IF:1:50-1:200,

Restrictions: For Research Use only

Handling

Format: Liquid

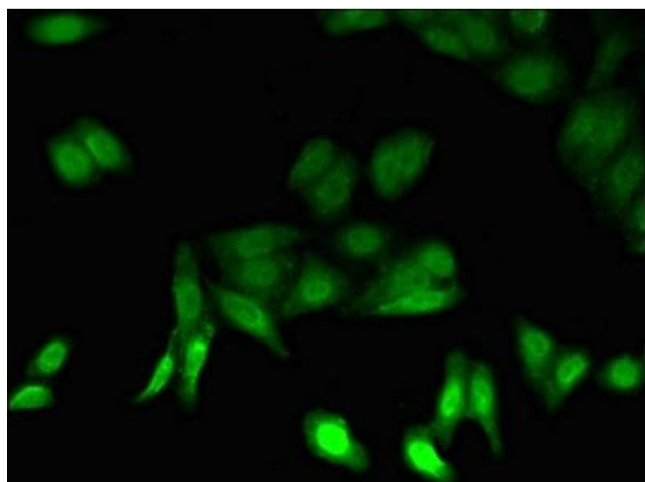
Buffer: Preservative: 0.03 % Proclin 300
Constituents: 50 % Glycerol, 0.01M PBS, PH 7.4

Preservative: ProClin

Precaution of Use: This product contains ProClin: a POISONOUS AND HAZARDOUS SUBSTANCE which should be handled by trained staff only.

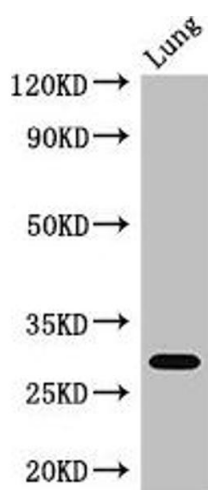
Storage: -20 °C,-80 °C

Storage Comment: Upon receipt, store at -20°C or -80°C. Avoid repeated freeze.



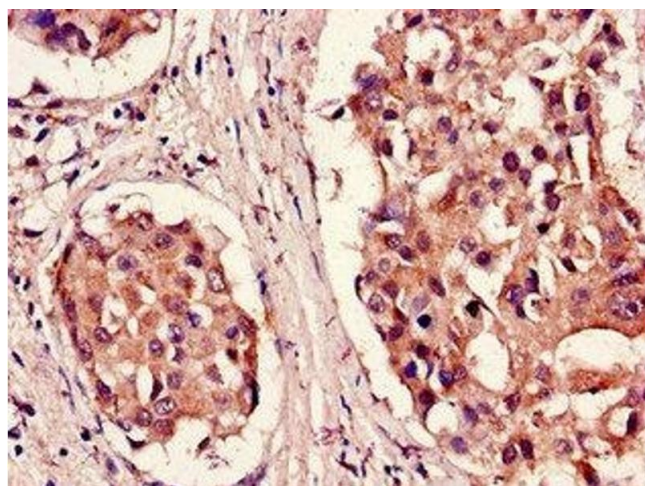
Immunofluorescence

Image 1. Immunofluorescent analysis of HepG2 cells using ABIN7164982 at dilution of 1:100 and Alexa Fluor 488-conjugated AffiniPure Goat Anti-Rabbit IgG(H+L)



Western Blotting

Image 2. Western Blot Positive WB detected in: Mouse lung tissue All lanes: PSMB5 antibody at 3 µg/mL Secondary Goat polyclonal to rabbit IgG at 1/50000 dilution Predicted band size: 29, 22, 18 kDa Observed band size: 29 kDa



Immunohistochemistry

Image 3. Immunohistochemistry of paraffin-embedded human breast cancer using ABIN7164982 at dilution of 1:100

Please check the [product details page](#) for more images. Overall 4 images are available for ABIN7164982.