



[Go to Product page](#)

Datasheet for ABIN7164990  
**anti-PSMB8 antibody (AA 176-276)**

2 Images

### Overview

Quantity:	100 µL
Target:	PSMB8
Binding Specificity:	AA 176-276
Reactivity:	Human
Host:	Rabbit
Clonality:	Polyclonal
Conjugate:	This PSMB8 antibody is un-conjugated
Application:	Immunohistochemistry (IHC), ELISA

### Product Details

Immunogen:	Recombinant Human Proteasome subunit beta type-8 protein (176-276AA)
Isotype:	IgG
Cross-Reactivity:	Human
Purification:	>95%, Protein G purified

### Target Details

Target:	PSMB8
Alternative Name:	PSMB8 ( <a href="#">PSMB8 Products</a> )
Background:	Background: The proteasome is a multicatalytic proteinase complex which is characterized by its ability to cleave peptides with Arg, Phe, Tyr, Leu, and Glu adjacent to the leaving group at

## Target Details

---

neutral or slightly basic pH . The proteasome has an ATP-dependent proteolytic activity. This subunit is involved in antigen processing to generate class I binding peptides. Replacement of PSMB5 by PSMB8 increases the capacity of the immunoproteasome to cleave model peptides after hydrophobic and basic residues. Acts as a major component of interferon gamma-induced sensitivity. Plays a key role in apoptosis via the degradation of the apoptotic inhibitor MCL1. May be involved in the inflammatory response pathway. In cancer cells, substitution of isoform 1 (E2) by isoform 2 (E1) results in immunoproteasome deficiency. Required for the differentiation of preadipocytes into adipocytes.

Aliases: ALDD antibody, D6S216 antibody, D6S216E antibody, Large multifunctional peptidase 7 antibody, Large multifunctional protease 7 antibody, LMP 7 antibody, LMP7 antibody, Low molecular mass protein 7 antibody, Low molecular weight protein 7 antibody, Macropain subunit C13 antibody, MGC1491 antibody, Multicatalytic endopeptidase complex subunit C13 antibody, NKJO antibody, OTTHUMP00000062981 antibody, Protease component C13 antibody, Proteasome (prosome macropain) subunit beta type 8 antibody, Proteasome (prosome, macropain) subunit, beta type, 8 (large multifunctional peptidase 7) antibody, Proteasome beta 8 subunit antibody, Proteasome catalytic subunit 3i antibody, Proteasome component C13 antibody, Proteasome related gene 7 antibody, Proteasome subunit beta 5i antibody, Proteasome subunit beta 8 antibody, Proteasome subunit beta type 8 antibody, Proteasome subunit beta type antibody, Proteasome subunit beta type-8 antibody, Proteasome subunit beta-5i antibody, Proteasome subunit Y2 antibody, PSB8\_HUMAN antibody, PSMB 8 antibody, PSMB5i antibody, PSMB8 antibody, Really interesting new gene 10 protein antibody, RING 10 antibody, RING10 antibody, Y2 antibody

---

UniProt: [P28062](#)

---

Pathways: [Mitotic G1-G1/S Phases](#), [DNA Replication](#), [Synthesis of DNA](#)

## Application Details

---

Application Notes: Recommended dilution: IHC:1:20-1:200,

Restrictions: For Research Use only

## Handling

---

Format: Liquid

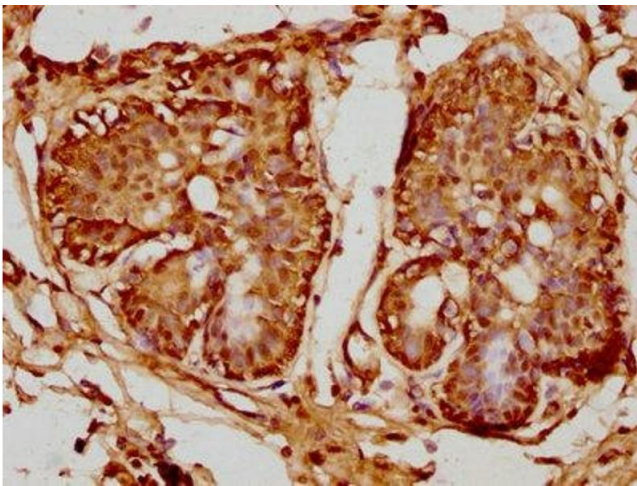
Buffer: Preservative: 0.03 % Proclin 300  
Constituents: 50 % Glycerol, 0.01M PBS, pH 7.4

---

## Handling

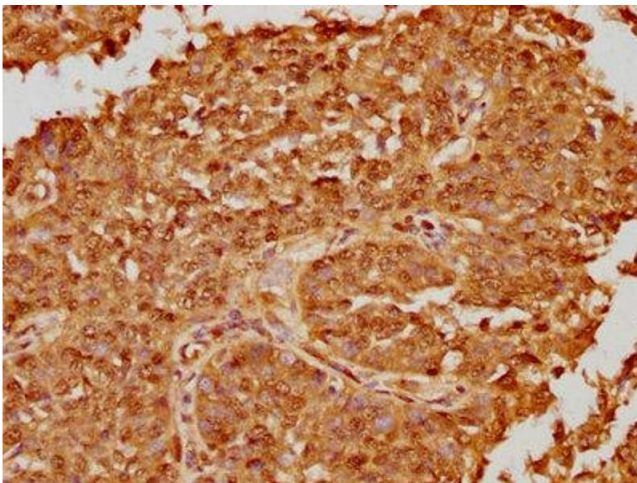
Preservative:	ProClin
Precaution of Use:	This product contains ProClin: a POISONOUS AND HAZARDOUS SUBSTANCE which should be handled by trained staff only.
Storage:	-20 °C,-80 °C
Storage Comment:	Upon receipt, store at -20°C or -80°C. Avoid repeated freeze.

## Images



### Immunohistochemistry

**Image 1.** IHC image of ABIN7164990 diluted at 1:100 and staining in paraffin-embedded human breast cancer performed on a Leica Bond™ system. After dewaxing and hydration, antigen retrieval was mediated by high pressure in a citrate buffer (pH 6.0). Section was blocked with 10 % normal goat serum 30 min at RT. Then primary antibody (1 % BSA) was incubated at 4 °C overnight. The primary is detected by a biotinylated secondary antibody and visualized using an HRP conjugated SP system.



### Immunohistochemistry

**Image 2.** IHC image of ABIN7164990 diluted at 1:100 and staining in paraffin-embedded human cervical cancer performed on a Leica Bond™ system. After dewaxing and hydration, antigen retrieval was mediated by high pressure in a citrate buffer (pH 6.0). Section was blocked with 10 % normal goat serum 30 min at RT. Then primary antibody (1 % BSA) was incubated at 4 °C overnight. The primary is detected by a biotinylated secondary antibody and visualized using an HRP conjugated SP system.