



[Go to Product page](#)

Datasheet for ABIN7164998
anti-POT1 antibody (AA 250-432)

3 Images

Overview

Quantity:	100 µg
Target:	POT1
Binding Specificity:	AA 250-432
Reactivity:	Human
Host:	Rabbit
Clonality:	Polyclonal
Conjugate:	This POT1 antibody is un-conjugated
Application:	ELISA, Immunohistochemistry (IHC), Immunofluorescence (IF)

Product Details

Immunogen:	Recombinant Human Protection of telomeres protein 1 protein (250-432AA)
Isotype:	IgG
Cross-Reactivity:	Human
Purification:	>95%, Protein G purified

Target Details

Target:	POT1
Alternative Name:	POT1 (POT1 Products)
Background:	Background: Component of the telomerase ribonucleoprotein (RNP) complex that is essential for the replication of chromosome termini. Is a component of the double-stranded telomeric

Target Details

DNA-binding TRF1 complex which is involved in the regulation of telomere length by cis-inhibition of telomerase. Also acts as a single-stranded telomeric DNA-binding protein and thus may act as a downstream effector of the TRF1 complex and may transduce information about telomere maintenance and/or length to the telomere terminus. Component of the shelterin complex (telosome) that is involved in the regulation of telomere length and protection. Shelterin associates with arrays of double-stranded TTAGGG repeats added by telomerase and protects chromosome ends, without its protective activity, telomeres are no longer hidden from the DNA damage surveillance and chromosome ends are inappropriately processed by DNA repair pathways. Binds to two or more telomeric single-stranded 5'-TTAGGG-3' repeats (G-strand) and with high specificity to a minimal telomeric single-stranded 5'-TAGGGTTAG-3' sequence. Binds telomeric single-stranded sequences internally or at proximity of a 3'-end. Its activity is TERT dependent but it does not increase TERT activity by itself. In contrast, the ACD-POT1 heterodimer enhances telomere elongation by increasing telomerase processivity. Aliases: DKFZP586D211 antibody, hPot 1 antibody, hPot1 antibody, POT 1 antibody, POT1 antibody, POT1 like telomere end-binding protein antibody, POT1 protection of telomeres 1 homolog antibody, POT1-like telomere end-binding protein antibody, POTE1_HUMAN antibody, Protection of telomeres 1 antibody, Protection of telomeres 1 homolog (S. pombe) antibody, Protection of telomeres protein 1 antibody

UniProt: [Q9NUX5](#)

Pathways: [Cell Division Cycle, Telomere Maintenance](#)

Application Details

Application Notes: Recommended dilution: IHC:1:20-1:200, IF:1:50-1:200,

Restrictions: For Research Use only

Handling

Format: Liquid

Buffer: Preservative: 0.03 % Proclin 300
Constituents: 50 % Glycerol, 0.01M PBS, pH 7.4

Preservative: ProClin

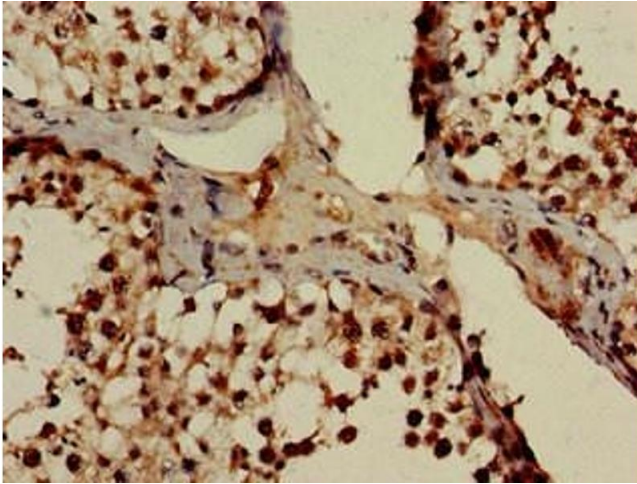
Precaution of Use: This product contains ProClin: a POISONOUS AND HAZARDOUS SUBSTANCE which should be handled by trained staff only.

Handling

Storage: -20 °C,-80 °C

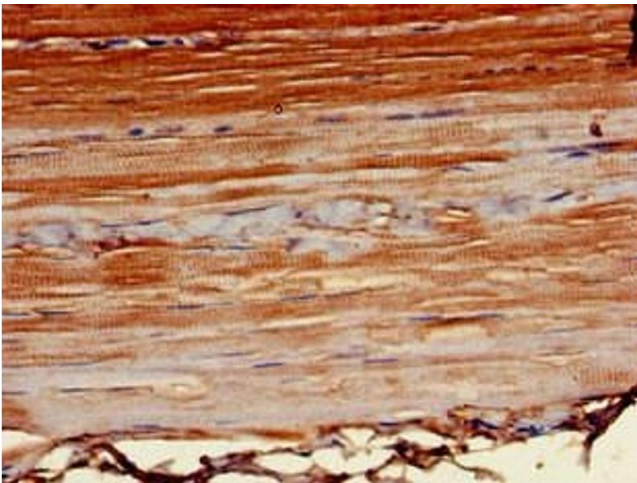
Storage Comment: Upon receipt, store at -20°C or -80°C. Avoid repeated freeze.

Images



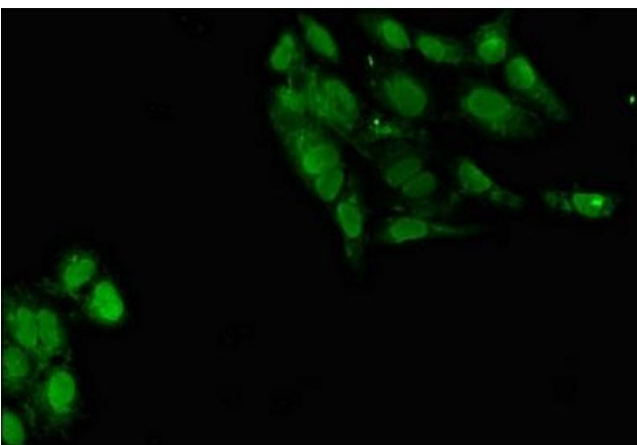
Immunohistochemistry

Image 1. Immunohistochemistry of paraffin-embedded human testis tissue using ABIN7164998 at dilution of 1:100



Immunohistochemistry

Image 2. Immunohistochemistry of paraffin-embedded human skeletal muscle tissue using ABIN7164998 at dilution of 1:100



Immunofluorescence

Image 3. Immunofluorescent analysis of HeLa cells using ABIN7164998 at dilution of 1:100 and Alexa Fluor 488-conjugated AffiniPure Goat Anti-Rabbit IgG(H+L)