

Datasheet for ABIN7165044  
**anti-AMN antibody (AA 25-163)**[Go to Product page](#)

## 2 Images

## Overview

Quantity:	100 µg
Target:	AMN
Binding Specificity:	AA 25-163
Reactivity:	Human
Host:	Rabbit
Clonality:	Polyclonal
Conjugate:	This AMN antibody is un-conjugated
Application:	ELISA, Immunohistochemistry (IHC), Immunofluorescence (IF)

## Product Details

Immunogen:	Recombinant Human Protein amnionless protein (25-163AA)
Isotype:	IgG
Cross-Reactivity:	Human
Purification:	>95%, Protein G purified

## Target Details

Target:	AMN
Alternative Name:	AMN ( <a href="#">AMN Products</a> )
Background:	Background: Necessary for efficient absorption of vitamin B12 (PubMed:12590260, PubMed:14576052). Required for normal CUBN-mediated protein transport in the kidney. May

## Target Details

direct the production of trunk mesoderm during development by modulating a bone morphogenetic protein (BMP) signaling pathway in the underlying visceral endoderm (By similarity).

Aliases: 5033428N14Rik antibody, amn antibody, Amnion associated transmembrane protein antibody, Amnionless antibody, Amnionless homolog antibody, AMNLS\_HUMAN antibody, AV002116 antibody, PRO1028 antibody, Protein amnionless antibody, Type I transmembrane protein antibody, UNQ513/PRO1028 antibody, Visceral endoderm specific type 1 transmembrane protein antibody

UniProt: [Q9BXJ7](#)

Pathways: [Lipid Metabolism](#)

## Application Details

Application Notes: Recommended dilution: IHC:1:500-1:1000, IF:1:200-1:500,

Restrictions: For Research Use only

## Handling

Format: Liquid

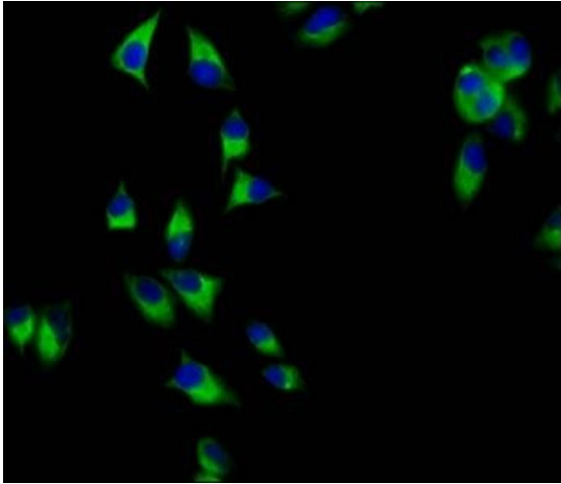
Buffer: Preservative: 0.03 % Proclin 300  
Constituents: 50 % Glycerol, 0.01M PBS, pH 7.4

Preservative: ProClin

Precaution of Use: This product contains ProClin: a POISONOUS AND HAZARDOUS SUBSTANCE which should be handled by trained staff only.

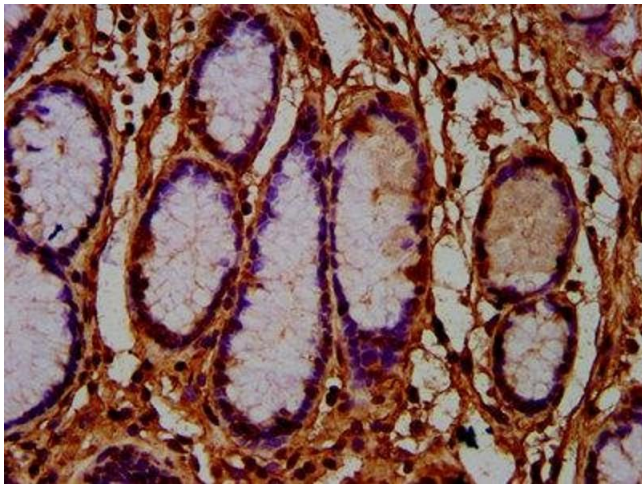
Storage: -20 °C, -80 °C

Storage Comment: Upon receipt, store at -20°C or -80°C. Avoid repeated freeze.



#### Immunofluorescence

**Image 1.** Immunofluorescence staining of HeLa cells with ABIN7165044 at 1:200, counter-stained with DAPI. The cells were fixed in 4% formaldehyde, permeabilized using 0.2% Triton X-100 and blocked in 10% normal Goat Serum. The cells were then incubated with the antibody overnight at 4°C. The secondary antibody was Alexa Fluor 488-conjugated AffiniPure Goat Anti-Rabbit IgG(H+L).



#### Immunohistochemistry

**Image 2.** IHC image of ABIN7165044 diluted at 1:600 and staining in paraffin-embedded human gastric cancer performed on a Leica Bond™ system. After dewaxing and hydration, antigen retrieval was mediated by high pressure in a citrate buffer (pH 6.0). Section was blocked with 10% normal goat serum 30min at RT. Then primary antibody (1% BSA) was incubated at 4°C overnight. The primary is detected by a biotinylated secondary antibody and visualized using an HRP conjugated SP system.