



[Go to Product page](#)

Datasheet for ABIN7165103  
**anti-ARMCX6 antibody (AA 28-300)**

3 Images

### Overview

Quantity:	100 µg
Target:	ARMCX6
Binding Specificity:	AA 28-300
Reactivity:	Human
Host:	Rabbit
Clonality:	Polyclonal
Conjugate:	This ARMCX6 antibody is un-conjugated
Application:	ELISA, Western Blotting (WB), Immunohistochemistry (IHC)

### Product Details

Immunogen:	Recombinant Human Protein ARM CX6 protein (28-300AA)
Isotype:	IgG
Cross-Reactivity:	Human
Purification:	Antigen Affinity Purified

### Target Details

Target:	ARMCX6
Alternative Name:	ARMCX6 ( <a href="#">ARMCX6 Products</a> )
Background:	ARMCX6 antibody, Protein ARM CX6 antibody
UniProt:	<a href="#">Q7L4S7</a>

## Application Details

---

Application Notes: Recommended dilution: WB:1:500-1:2000, IHC:1:20-1:200,

---

Restrictions: For Research Use only

---

## Handling

---

Format: Liquid

---

Buffer: Preservative: 0.03 % Proclin 300  
Constituents: 50 % Glycerol, 0.01M PBS, PH 7.4

---

Preservative: ProClin

---

Precaution of Use: This product contains ProClin: a POISONOUS AND HAZARDOUS SUBSTANCE which should be handled by trained staff only.

---

Storage: -20 °C,-80 °C

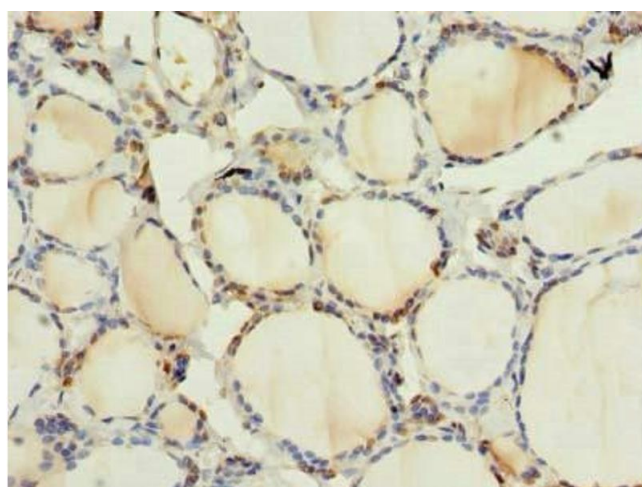
---

Storage Comment: Upon receipt, store at -20°C or -80°C. Avoid repeated freeze.

---

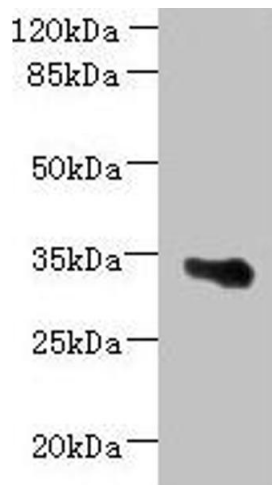
## Images

---



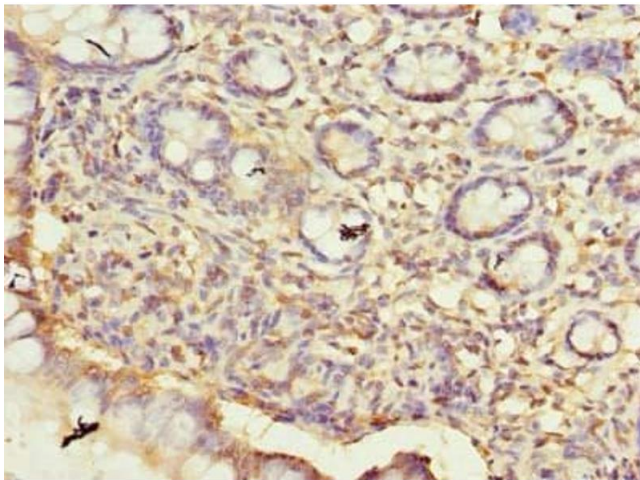
### Immunohistochemistry

**Image 1.** Immunohistochemistry of paraffin-embedded human thyroid tissue using ABIN7165103 at dilution of 1:100



### Western Blotting

**Image 2.** Western blot All lanes: ARM CX6 antibody at 1.3  $\mu$ g/mL + U251 whole cell lysate Secondary Goat polyclonal to rabbit IgG at 1/10000 dilution Predicted band size: 34 kDa Observed band size: 34 kDa



### Immunohistochemistry

**Image 3.** Immunohistochemistry of paraffin-embedded human small intestine tissue using ABIN7165103 at dilution of 1:100