

Datasheet for ABIN7165122  
**anti-BANP antibody (AA 1-260)**



[Go to Product page](#)

4 Images

### Overview

Quantity:	100 µL
Target:	BANP
Binding Specificity:	AA 1-260
Reactivity:	Human
Host:	Rabbit
Clonality:	Polyclonal
Conjugate:	This BANP antibody is un-conjugated
Application:	Western Blotting (WB), ELISA, Immunohistochemistry (IHC)

### Product Details

Immunogen:	Recombinant Human Protein BANP protein (1-260AA)
Isotype:	IgG
Cross-Reactivity:	Human
Purification:	Antigen Affinity Purified

### Target Details

Target:	BANP
Alternative Name:	BANP ( <a href="#">BANP Products</a> )
Background:	Background: Controls V(D)J recombination during T-cell development by repressing T-cell receptor (TCR) beta enhancer function. Binds to scaffold/matrix attachment region beta

## Target Details

---

(S/MARbeta), an ATC-rich DNA sequence located upstream of the TCR beta enhancer.

Represses cyclin D1 transcription by recruiting HDAC1 to its promoter, thereby diminishing H3K9ac, H3S10ph and H4K8ac levels. Promotes TP53 Ser-15 phosphorylation and nuclear accumulation, which causes cell cycle arrest.

Aliases: AAH09424 antibody, Banp antibody, BANP\_HUMAN antibody, BEN domain-containing protein 1 antibody, BEND1 antibody, BTG3 associated nuclear protein isoform a antibody, Btg3-associated nuclear protein antibody, DKFZp761H172 antibody, FLJ 10177 antibody, FLJ 20538 antibody, FLJ10177 antibody, FLJ20538 antibody, Protein BANP antibody, Scaffold/Matrix associated region 1 antibody, Scaffold/matrix-associated region-1-binding protein antibody, SMAR 1 antibody, SMAR1 antibody, SMARBP 1 antibody, SMARBP1 antibody

---

UniProt: [Q8N9N5](#)

## Application Details

---

Application Notes: Recommended dilution: WB:1:500-1:2000, IHC:1:20-1:200,

Restrictions: For Research Use only

## Handling

---

Format: Liquid

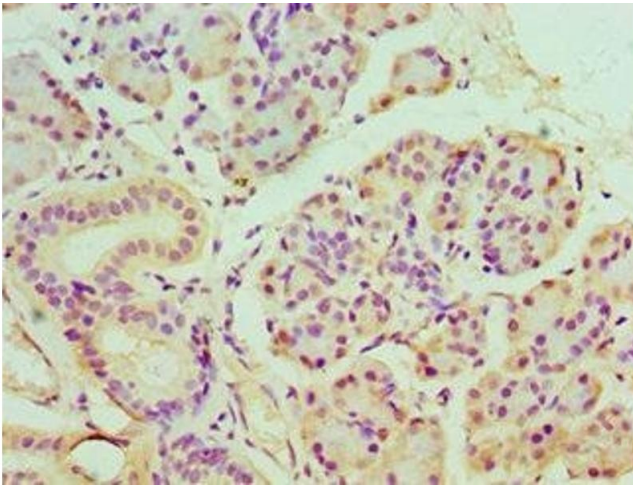
Buffer: PBS with 0.02 % sodium azide, 50 % glycerol, pH 7.3.

Preservative: Sodium azide

Precaution of Use: This product contains Sodium azide: a POISONOUS AND HAZARDOUS SUBSTANCE which should be handled by trained staff only.

Storage: -20 °C,-80 °C

Storage Comment: Upon receipt, store at -20°C or -80°C. Avoid repeated freeze.



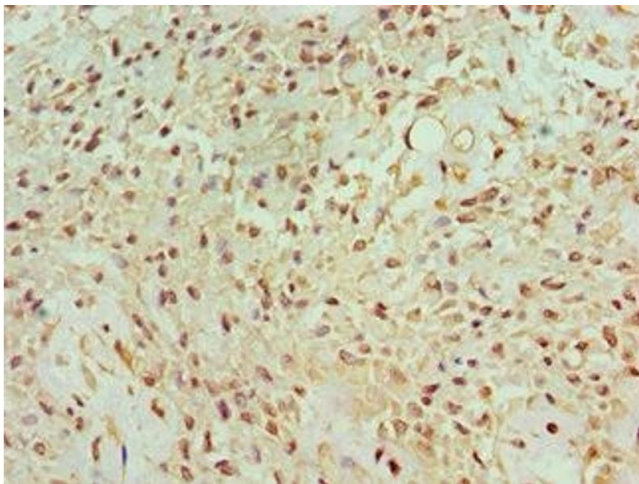
### Immunohistochemistry

**Image 1.** Immunohistochemistry of paraffin-embedded human pancreatic tissue using ABIN7165122 at dilution of 1:100



### Western Blotting

**Image 2.** Western blot All lanes: BANP antibody at 6 µg/mL + HepG2 whole cell lysate Secondary Goat polyclonal to rabbit IgG at 1/10000 dilution Predicted band size: 57, 52, 49, 54, 55, 51, 56 kDa Observed band size: 49 kDa



### Immunohistochemistry

**Image 3.** Immunohistochemistry of paraffin-embedded human breast cancer using ABIN7165122 at dilution of 1:100

Please check the [product details page](#) for more images. Overall 4 images are available for ABIN7165122.